

AIO

(ALL-IN-ONE MUSIC CENTER)



Mar, 2019
Simon Audio

Intoduction

AIO(All-In-One) Music Center

Thank you for choosing AIO, a real high-end music center.

Not like the other all-in-one audio equipment in the market today, Simon Audio AIO is a true high-end audio device which delivers the true quality of high-end music reproduction.

Equipped with 100W per channel (8 ohms), true analog amplifier, AIO reproduces the subtle and also powerful music nirvana in one rugged chassis.

Digital processing is designed by proprietary FPGA to enhance the digital sound quality. What you hear from this device is not similar to the other All-in-ones in the market but a totally different level of sonic characters.

AIO has 12 input function within its rugged chassis as below.

- 1) Top-loading CD player
- 2) FM tuner
- 3) Bluetooth connection
- 4) USB port (type) for use with Memory Stick or external hard drive.
- 5) USB port (type) for use with personal computer or notebook
- 6) DLNA compliant network support
- 7) Coaxial Input for external digital devices (TV, set-top, Blu-ray players etc.)
- 8) 2 Optical Inputs
- 9) 1 Balanced (XLR) Analog Input
- 10) 2 Unbalanced (RCA) Analog Inputs

Add on the above-mentioned 12 inputs, AIO has Pre-out function to connect to external Amplifier and supports headphone jack for private listening.

With AIO, loudspeakers and speaker cables are all that's needed to create a true high-end music system.

You will experience all the qualities you've come to expect from high-end audio products: wide, deep soundstage, tremendous dynamics, and delicate details and nuance. AIO's 100W MOSFET output stage is truly state-of-the-art.

Operation is extremely intuitive and hassle-free. The top-loading mechanism is purpose-built to extract the utmost from CD playback. AIO also brings the audiophile aesthetic to playback up to 24bit/384k files as well as DSD files.

Essential Design Concepts

AIO is a joy to use.

AIO concept is established by Simon Lee who has established Simon Audio after his twenty plus years of dedication for his previous company, April Music, Inc.

Design concept is very simple.

- Musically correct music center
- Ease of use so that any members of the family can use this AIO
- True to real level reproduction of the recordings.
- Simple and straight forward, but also rugged chassis design.

So Simon has teamed up with many designers headed by Thomas Uhm who has been working with him more than 40 years.

Chassis design is done by Digital Physics in Korea led by Suh Bum-Ki, one of the leading industrial designers.

Simon and Suh has made the look of AIO, built like a tank but still high-end look and simple playback with easy operation.

AIO is the harmonious blend of the tried-and-true with state-of-the-art, for better music everywhere.

Cautions

- 1) Each AIO is shipped with power supply set to the line voltage of each destination country (100VAC-240VAC). Please check this before plugging your AIO into the power outlet.
- 2) AIO is a precision instrument and is sensitive to external vibration. A bit of care taken in placing it in your listening environment will result in much more musical satisfaction.
- 3) The main "Power On" button is located on the left bottom from the front panel. You can leave the power turned on for a period of longer time until the unit comes to a complete break-in period. And you can turn it off after break-in or in case you are away from home for a long time.
- 4) The glass cover for the CD prevents dust from contaminating the mechanism. When not using the CD section, please keep the glass in 'CLOSED' position.
- 5) The CD stabilizer is magnetic. Keep it away from credit and ID cards and other magnetically susceptible items.
- 6) The AIO is a very complicated high-technology device. Don't attempt to open the unit unless you are an authorized AIO dealer or technician. Opening without factory approval will void the warranty.

Unpacking

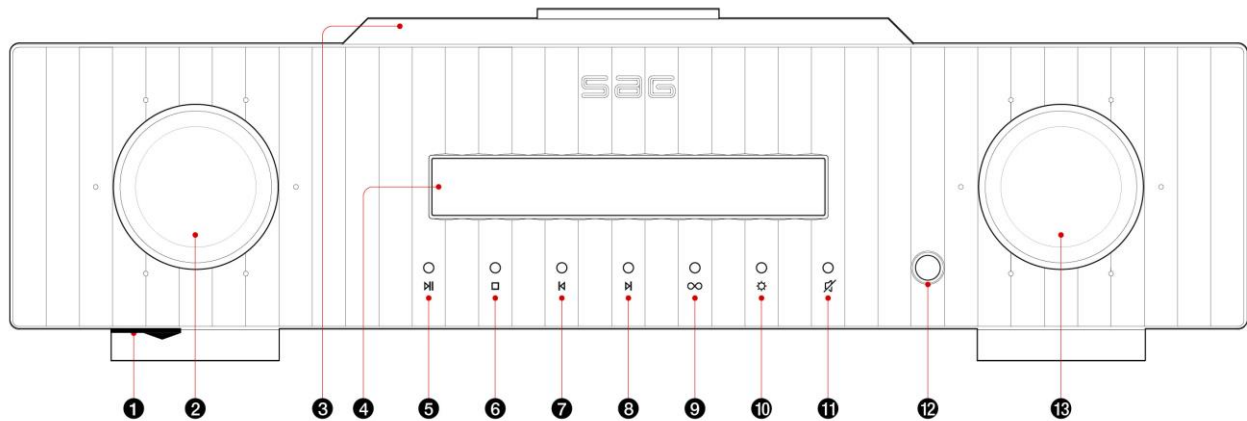
Make sure all the following are in the box:

- 1) AIO Music Center
- 2) Remote control
- 3) CD stabilizer
- 4) USB cable (PC USB port <---> AIO)
- 5) FM Antenna
- 6) Cleaning Cloth
- 7) Power cable
- 8) User's manual

If anything is missing, please contact your dealer or email us at info@audio.co.kr

Connections

Front Panel View

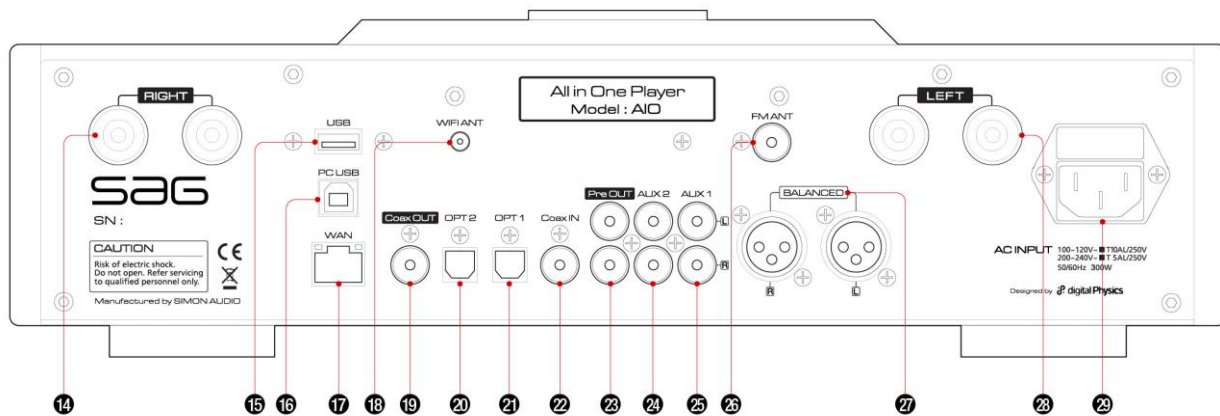


- 1) POWER On/Off Switch : Power switch is located beneath the bottom of the front/leftside which can not be seen from above.
Just slide your finger underneath from the left front panel to operate this switch.
- 2) INPUT SELECTOR KNOB
Rotate the Knob to find your preferred input. You have to see the left side of the display to select your input status
- 3) CD TOP COVER
Slide back to open the CD drawer.
Then place your CD and put the stabilizer followed by closing the door to initialize CD playback.
When the CD is closed, the information of the CD (tracks, time) info will be displayed.
- 4) DISPLAY AREA
11 digits of 7 segment display will be shown.
Left side of the display shows the 'INPUT' and the right side displays 'VOLUME' when in normal mode.
- 5) PLAY/PAUSE
CD, USB Memory Stick

- 6) STOP
CD, USB Memory Stick
- 7) PREVIOUS
CD, USB Memory Stick, FM Tuner Tuning
- 8) NEXT
CD, USB Memory Stick, FM Tuner Tuning
- 9) REPEAT (Repeat One, ALL, Off)
CD, USB Memory Stick
- 10) DISPLAY DENSITY
To control the brightness of the display window.
- 11) MUTE
To turn off the volume and turn on again on the front panel
- 12) HEADPHONE INPUT
Headphone with standard 1/4" plug will fit directly into this jack.
Headphones with mini-plugs will need an adaptor, not supplied.
Output to the loudspeakers is cut off immediately when headphone is inserted.
- 13) VOLUME
To control the listening level (Volume from 00 up to 63) by rotating the volume knob. Clockwise to increase the volume and counter clockwise to turn down the volume

* ALL THESE FRONT PANEL BUTTON FUNCTIONS CAN BE CONTROLLED BY THE **REMOTE CONTROL** ALSO

Rear Panel View



14) RIGHT SPEAKER BINDING POST

Connect your right speaker cable to this post. Be sure to match the polarity (+ -) like red (+) to red and black to black.

15) USB MEMORY

Plug your Memory Stick which stores your favorite music into this slot.

When you plug in the memory, AIO will read in the table of the files and takes some time depending on the file size of the memory.

When you want to connect external hard drives, the read-in time will be much longer. Check by yourself to see which size of memory stick will fit your needs.

Any kinds of music files can be played from mp3, WAV, Flac, etc (up to 384k/32bit and DSD files)

Operation is exactly same with CD playback.

But you can use +10/-10 keys from the remote to skip the folders as fast as possible.

16) PC USB

The included USB cable should be used to connect PC and AIO.

When so connected, your PC acts as host machine and recognizes AIO as an external USB audio device.

You may need to manually select this in your PC's control panel, under "Sounds and Audio Devices."

You may also get the PC to recognize AIO by doing a "cold boot" by disconnecting the PC's power cable.

17) RJ45 NETWORK PORT

Connect the LAN cable from the wifi router with this port.

Be sure to make your wifi name used in your Phone or Pad under same name to control NET functions (DLNA server connection etc).

18) WIFI ANTENNA CONNECTOR

19) COAXIAL DIGITAL OUTPUT

Used for the digital recording (special recording software may be needed).

20), 21) OPTICAL INPUTS

Optical cable (Toslink) from any digital devices can be connected (like TV Set-top box, Blu-ray player, CD Transport, Portable Players etc) to listen through AIO system

22) COAXIAL INPUT

Same as Optical ports. If you want more reliable digital sound, use this COAX port and associated digital cable.

23) PRE OUT

When you want to use another amplifier, please connect from this port to the amplifier. In this case, your speaker cables at AIO should be disconnected.

24), 25) AUX1, 2

For the external, analog inputs, you can use these ports and/or XLR port.

For example, phono equalized signal from your turntable can be hooked into this port.

Or any standard analog signal can be connected and played back for these ports.

26) FM TUNER ANTENNA

The quality of FM reception is strongly dependent on antenna quality.

Although a simple length of wire will act as an antenna, it may induce noise.

Experimenting with antenna type and location will reward you with better sound.

We strongly recommend to try dedicated outdoor antenna for the best performance.

27) BALANCED ANALOG INPUT

Same as AUX1,2 but with XLR cable

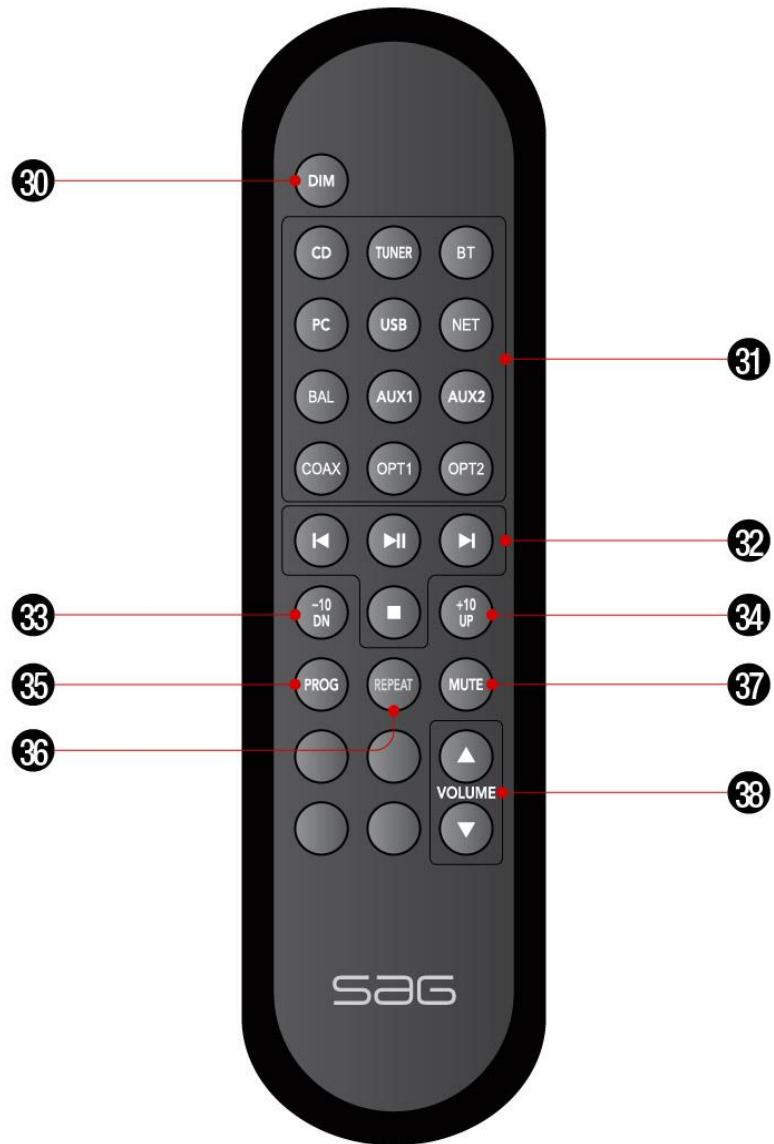
28) LEFT SPEAKER BINDING POST

29) AC MAINS

Check that AIO's power supply matches your local electrical service, then plug in the AC cord.

To hear music immediately, simply turn on the main power switch.

Remote Control



30) DIM

Control the brightness of the AIO main display. 4 levels of DIM can be controlled.

31) MAIN INPUT SELECTION BUTTON AREA

12 input functions can be selected either from the main front panel (left knob) or this remote selection area.

32) MAIN NAVIGATION BUTTONS

4 buttons are dedicated here.

PLAY/PAUSE, NEXT, PREVIOUS, and STOP.

This buttons can comply to CD, Memory stick, FM operation etc.

33,34) +10/-10 BUTTON

Mostly used for USB Memory operation (Folder jumping), FM Preset Selection

35) PROG

Used for the FM preset.

Choose FM station by |<, >| (NEXT, PREVIOUS) buttons first.

Then, press PROG once if the display shows the correction information

of your FM Preset number. Choose PRESET number with |< or >|, then press PROG again to memorize the station into the preset number.

36) REPEAT

Press this button to select, REPEAT ONE, ALL, OFF.

37) MUTE

To turn the sound mute (no sound).

To unmute, just press once more.

38) VOLUME

Main volume control.

Upper pressing will increase the sound level whereas lower key will make the sound decrease.

Operation

Main Power ON/OFF

Main Power Switch is located underneath of the main unit (left side, front).

Turn the main power switch ON to make the unit into operation.

- When the power is switched on, the front display shows 'SIMON AUDIO' followed by the 'INITIALIZE' display.
- Wait around 30 seconds until the unit is initialized for proper operation
- After initialization, the last selected Source and Volume Level is displayed.
- Choose any 'SOURCE' by turning the main Left Knob or from the Remote.
-



1. CD Player

- Open the cover on the top-center of the device by sliding backward.
- Place CD you want to play



- Place the Stabilizer on top of CD and be sure to place correctly on the center. Stabilizer is magnetically treated so that it can be centered automatically when you place it close to the center.



- Close the cover by pulling the cover all the way to the front.
- CD information is automatically read-in when you close the door correctly.
- Choose track by pressing -> several times.
- Press Play/Pause ()
- Press Stop () if you want to stop listening to CD.

2. TUNER (FM only)

- Choose 'TUNER' from the remote or Main Source Knob on the front panel by rotating the knob.
- When AIO is TUNER mode, it shows 'FM' and 'VOLUME' level followed by 'STATION NUMBER'.



- Choose Station by pressing >| or |<. Station display will change by 0.1 digit like 93.7, 93.8, 93.9 etc.
 - You can store the STATION by pressing 'PROG' button once.
 - Then the display shows 'FM 93.9 MEMORY 01'
 - You can change MEMORY number by pressing >| or |<
 - Then press "PROG" one more to save this STATION into the MEMORY.
 - You can store up to 31 stations.
 - For quick selection of PRESET, press '-10' or '+10' button (Button number 33 & 34)
- If you have missed something during the setting, don't worry and do the same procedure to overwrite the pre-stored stations.

3. Bluetooth (B/T)

- B/T function enables you to play your music or any audio source from your B/T source like Smart Phone, Personal Computer or any device with Bluetooth function.
- Choose B/T by pressing B/T button from the remote or by rotating the front source knob. Display window will show as below.



To pair AIO with the source device, choose Bluetooth from your device setting and pair with AIO. AIO_**** will be your device name for Bluetooth.

When properly setup, the following information will be displayed.



- Choose your APP to play audio source (Music files, Youtube etc).
- When you change SOURCE, B/T will be disconnected.

4. PC

- AIO can be connected to your PC or Notebook to use them as a main music player for normal format audio files as well as DSD or up to 384k/24bit files.



- For McIntosh computers, there is no need for special driver to be installed before using AIO as a superb high-resolution DAC/Amplifier. But, for Windows computers, we need a special driver. Please refer to Simon Audio Lab website to download Windows driver.
- Download driver and install as guided.
- Go to the setup menu of your playback software (jriver, foobar, Audiovana etc).
- Mostly, menu named 'PREFERENCE', 'SETUP' contains driver selection menu.

5. USB (Type A)

- On the rear side of AIO, there is an USB Type A port to support Plug-and-play of music files contained in the USB.
- Any type of files can be played back except DSD and files over 192k/24bit format.
- This port is supplied for those who want to store and playback favorite music under 2,000 file format. You can store and play more files into this memory stick but it will take some time and we do not support any navigation tools for this port.
- Make some directories of your favorite genre or title, then copy files under the directories.
- We recommend around 200 files under one directory.
- When you choose 'USB' menu from the remote or front source knob, below display will be shown.



A green LED display showing the text "USB READ" in a digital font.

- Read-in time for each USB memory stick depends on the files in the memory. We recommend use this function for the playback of your real favorite songs.



A green LED display showing the text "USB 04 105" in a digital font.

The display shows that this memory stick contains 4 folders and 105 songs total.

- Playback in USB mode is only for serial mode. Press 'PLAY/PAUSE' to start the song. USE >|, |< buttons to go to NEXT or PREVIOUS song.
- Use +10, or -10 buttons to jump by 10 songs for each press.



A green LED display showing the text "01 01 CHANN" in a digital font.



A green LED display showing the text "USB 37 00.16" in a digital font.



A green LED display showing the text "38 11 THE I" in a digital font.

6. NET

- DLNA compatible network playback is supported.
- Use any DLNA apps to connect and playback songs in the Servers or Streaming music suppliers.
- Please refer to separate next Chapter for NETWORK function.

Network

- DLNA compatible network services are supported with AIO.
- No support for Apple Airplay at this time.
- No support for WiFi DLNA at this time (only Wired LAN supported).

Terminology

REMOTE CONTROL – Use your desktop, laptop, tablet or smartphone to tell the Server what to play.

SERVER – The Server organises your music, and displays your library, streaming services and radio stations on the Remote Control's screen. When told to play a file, the Server pushes the music file to a Renderer.

RENDERER – The Renderer turns the music file into a digital audio signal to send to your DAC.

DAC – The DAC converts the digital signal to an analog signal and sends it to an amplifier.

Different products on the market may combine two or more of these functions:

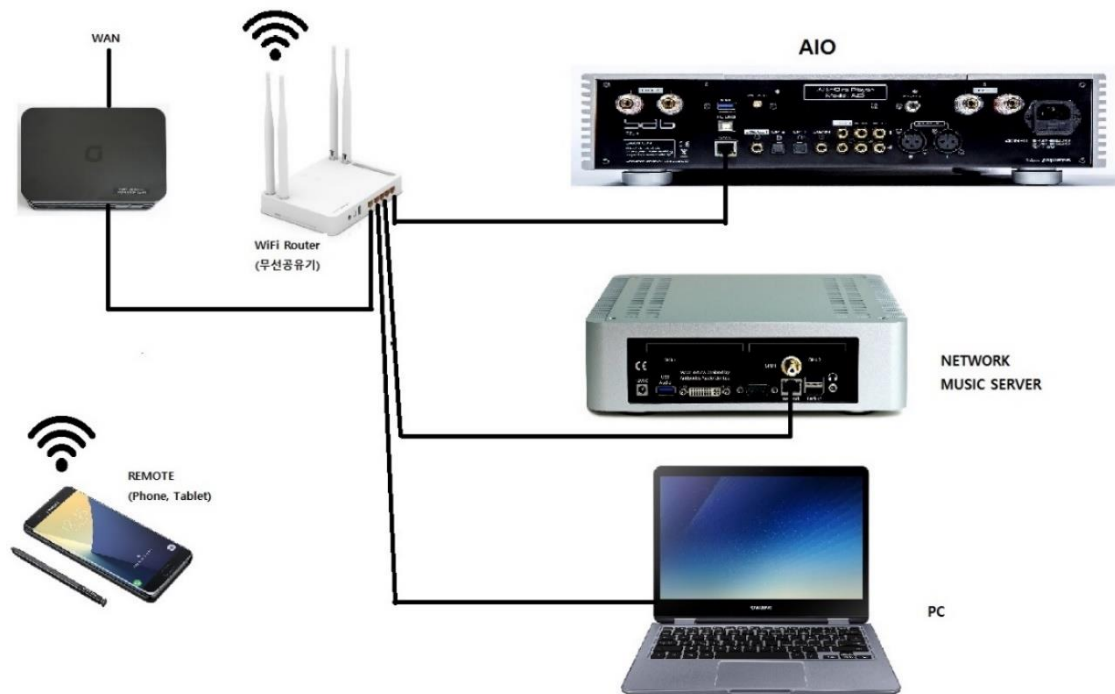
STREAMER – This term is used loosely, but it usually means a DAC with an Ethernet input, and combines the Renderer and DAC functions in a single device. Many streamers work by 'pulling' files stored on other devices on the network, and so in this case the remote control talks to the streamer. Other streamers, such as Roon Ready DACs, work by files being 'pushed' from a server to one or more streamers, and so the remote control talks to the server.

MUSIC SERVER – Most devices called Music Servers combine the Server and Renderer functions in a single device, and may include a ripper.

RIPPER – Ripping simply means reading the data on a CD and storing it as a playable music file. This process needs to be done well or you will be disappointed in the results, and given that it takes a lot of time to rip a large library, you should make sure this process is done at the highest possible quality.

Wiring (Connection) Diagram

- Use proper CAT-5 LAN cables between your WAN modem and Wifi router as well as between the router and devices.



- Music Server and PC can be optional.
- You need a Wifi Router which is connected to outside WAN network (mostly provided by the Network Suppliers).
- You can connect one port of the wifi router with AIO.
- Make sure that IP name of the network (wired or wireless) should be same.
- You do not need any setting from AIO when you use wired LAN connection between WiFi Router and AIO.
- Use your smart phone or tablet as a remote.

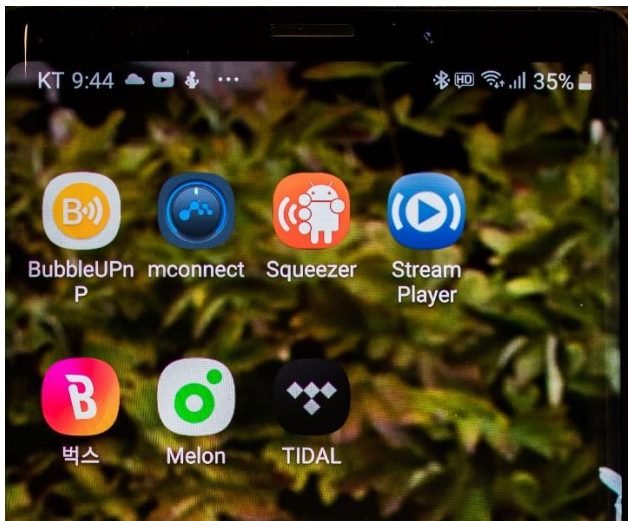
NET Operation

1) Smart phone setting

Download appropriate DLNA application from the Play Store (Android Phone) or APP Store (iPhone).

We recommend apps as below

- mconnect
- BubbleUPnP
- Or any DLNA compatible Apps or Music service Apps.



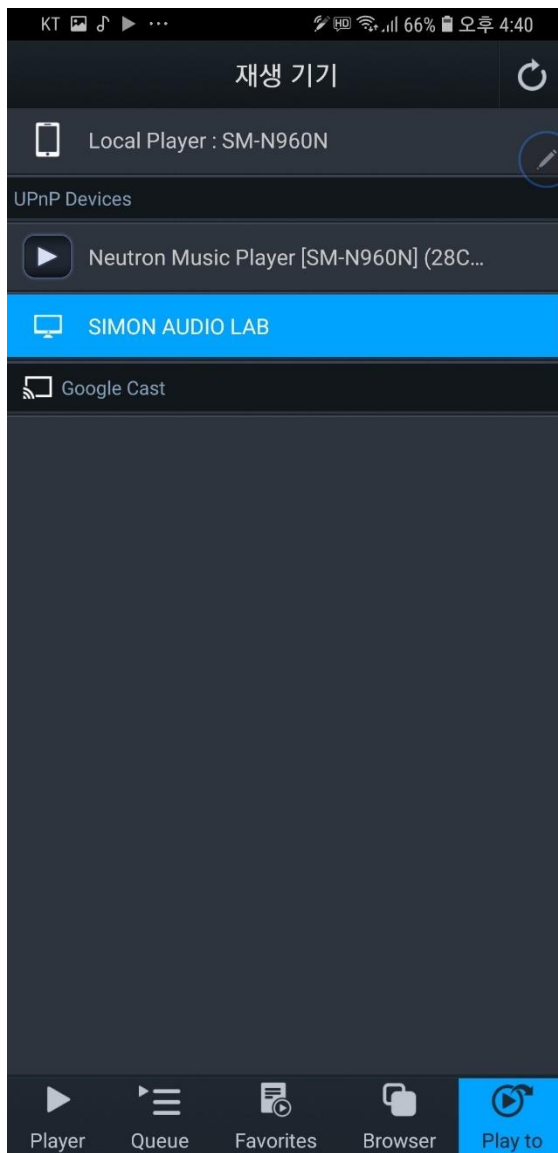
- Configure your phone's Wifi setting as the same network of the Wifi router.
- If you select different network, Apps will not work properly.

2) Example of application from the smart phone

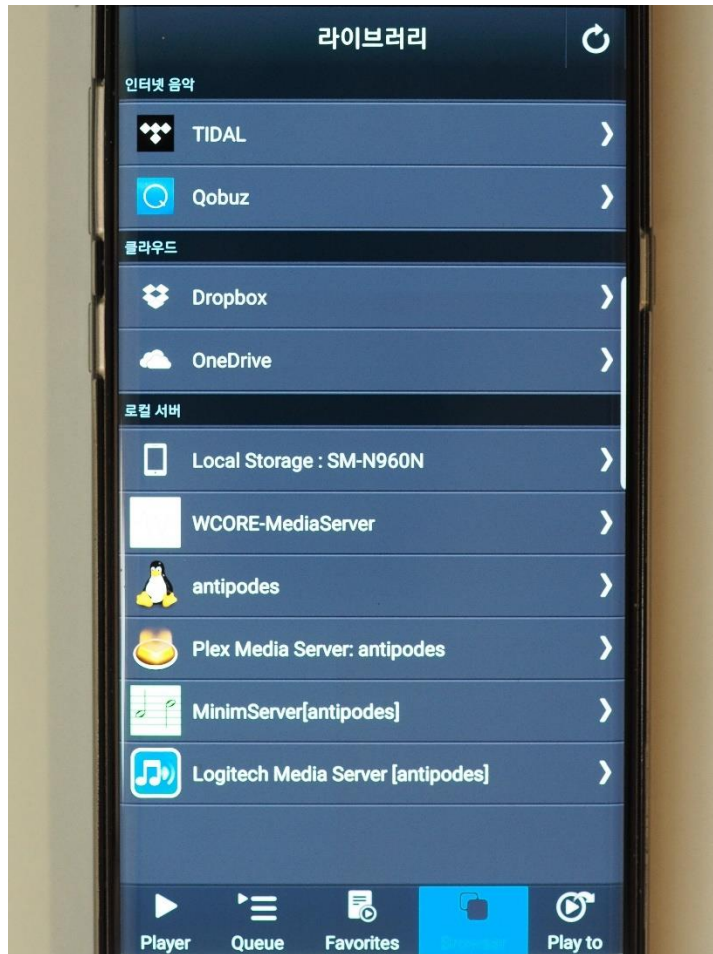
There are many applications you can try as a DLNA compliant player, but we strongly recommend 'mconnect' because of its stability and better sonic characters.

You can try other apps of your taste to find the difference of the user interface and the sonic changes.

Mconnect (app)



- Open mconnect App
- Touch 'Play to' button on the right low corner to choose which Device you want to play music.
- Choose 'SIMON AUDIO LAB' or 'AIO***' which is the system name of your AIO. If you can not see UPnP Devices, make sure your phone and AIO are under same network.
- Touch 'Browser' to view the music you can choose.



- If you are a subscriber of Tidal or Qobuz, you can choose and play the Tidal songs instantly.
- You can choose 'Internet Music', 'Cloud', and also local servers including the local phone.
- If you have a NAS connected, select the server to see the menu screen of the NAS.

For further navigation, please refer to the dedicated NAS manual.

- For other Apps, the playback procedures are very similar to 'mconnect' app.