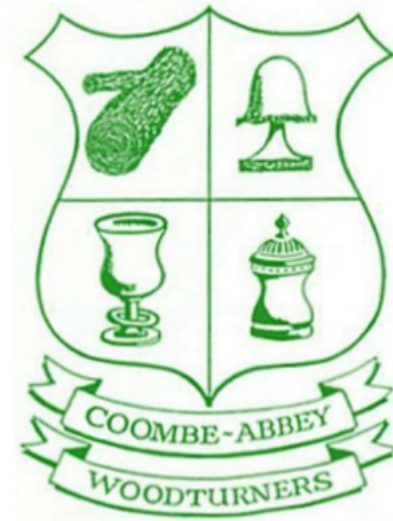


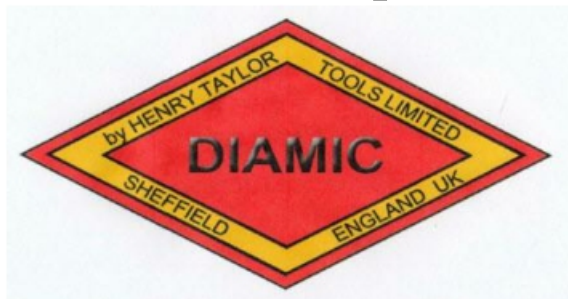
NEWSLETTER

May



2020

This Months Sponsor



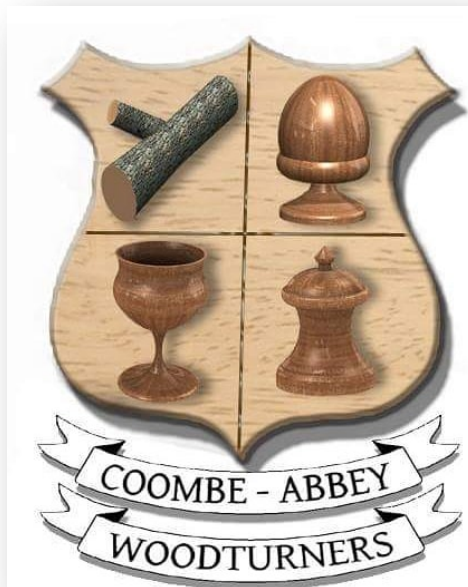
DATA PROTECTION

Your personal details are held on a computer belonging to an officer of the Coombe Abbey Woodturners. Your details are purely for the use of the Club, and are not passed to any third party. If you object to your name, address and telephone number being held on a computer belonging to an officer of the Club, then please write to any member of the committee.

HEALTH & SAFETY NOTICE

Woodturning can be dangerous! Always follow the manufacturers' instructions and safety advice when operating power tools. Never try the techniques shown at our demonstrations or in our Newsletter if you are unsure or the procedure does not feel safe. Always use the guarding and other safety equipment.

The Club takes reasonable care to operate and instruct in a safe manner and strongly recommends all members to follow the Club's Health and Safety rules and the guidance notes that the AWGB issue in their Revolutions magazine from time to time.



Website: <http://www.coombeabbeywoodturnersclub>

In This Issue Page

Chairman's Jottings.....	4
Herb Planter by Peter Wright.	5
This Months Sponsor.....	6
Spring Clean by John Morgan	8
Kumihino by Colin Grundy....	9
Work by Paul Friar.....	17
Work by John Bradbury.....	19
Calendar of Events.....	20
Very Sad News.....	21
Work by William Randle.....	22
One Line Philosopher.....	22
Child's chair in Ash.....	24
Work by Alec Steedman.....	26
Work by John Whittle.....	27
Work by John Morgan.....	29
Work by Pat Flynn.....	33
Work by Terry Ivins.....	37

Advertisers Page

Henry Taylor/Hamlet Tools....	7
Yandles.....	11
CSM Abrasives Plus.....	13
The ToolPost.....	14
Record Power.....	16
Proops Brothers.....	18
TMS Volvo.....	23
Turners Retreat.....	25
Charnwood.....	28
Crown Hand Tools.....	31
Henry Taylor/Hamlet Tools...	32
Axminster Tools & Machinery	34
Chestnut Products.....	36

From the Editor



First let me say I hope you are all keeping well and safe during these terrible times we are living through.

In last months newsletter I appealed for pictures of members work to fill the May newsletter as all our meetings have been cancelled into the foreseeable future. What a great response I got. A good many people have taken to their workshops and made items during the lockdown and others have sent me pictures of some of their existing work to reproduce in these pages. You will see that in most cases I have also reproduced the email text which accompanied the pictures even that which enquires after mine and my wife's health. I do appreciate your good wishes and it confirms what I have already known, that Coombe Abbey Woodturners is one big family of friends enjoying a common interest. Thank you so much.

Now do please keep the pictures of your work coming, even if you have sent me some already, too many is far better than not enough.

I have been asked by Janine to remind those of you that have not renewed your subscriptions yet that you can get in touch with Janine by ringing her on the number on page two of this magazine and she will advise you how you can pay and the cost.

Best wishes to all and please STAY SAFE

Graham

Chairman's Jottings

I'm really hoping that this finds all our members fit and well, and none have come down with the dreaded covid virus.

It seems like it is going to be a long time before things get back to normal - if ever - but we will remain positive.

I have been keeping myself sane by tidying up the workshop and gardening. It is surprising the items I have found that I thought was lost a while ago. Any member is welcome to send in photos of what they have been doing and I know that Graham Ball our newsletter editor would be delighted to receive a write up together with the photos. My very best wishes to you all at this very stressful time so please keep safe and I'll see you all soon.
Keep turning
Brian



Brian Edwards

oOo

Received from:

Bill Nicholson via "Whats App"

Ted says he doesn't know how old he is but he is ready for total isolation.



Herb Planter

By
Peter Wright

Hi Graham

You asked for some articles for the Newsletter so here is my contribution.

I recently broke up an old wooden bed with slats and being into wood-turning you don't waste any wood. Audrey has been asking for a herb planter for some time so put pen to paper and this is what I came up with. So off to the workshop, a lot of sawing, drilling (and a hole in my finger, whoops) and inserting screws to hold it together. Audrey did the paint job and came up with the idea of pinning old furniture coasters to the bottom to save the wood rotting. How clever is that! Just need the Garden Centre to open again so we can get some more herbs. Hey Ho.



This Months Newsletter Sponsor.

I would like to thank Paul Wragg and Barry Surplice of “Henry Taylor Tools” and “Hamlet Craft Tools” for agreeing to sponsor this issue of our Newsletter. The support given to Coombe Abbey Woodturners in this way by the woodturning trade is essential for helping to maintain a thriving woodturning club. Henry Taylor Tools have also been very generous in the past in donating tools for our workshop at Coombe which opened for the first time in August 2007. The club membership has swelled greatly in this time meaning that there are more and more people taking up the hobby who will be requiring turning tools.

I would urge club members to support our sponsor by buying their excellent turning and carving tools which can be obtained through the local agent - our very own club treasurer - Eric Taylor (no relation). If Eric hasn't got the tool you require in stock, he will be able to obtain it for you in double quick time.

Editor

Henry Taylor Tools Limited (A Company Profile)

Henry Taylor are world renowned and have been manufacturing tools **since 1834**, combining the traditional pride and skills of those far off days with the aids of modern technology. **Only the best quality steel is used**, coupled with advanced heat treatment, to ensure that the finest of cutting edges is not only achieved but also maintained.

Only Henry Taylor's unique combination of traditional skill, individualised production, Sheffield's best steel, overlaid with the necessary technology, can produce the wide variety of tools with precision of form and excellence of cutting edge demanded by skilled woodturners and woodcarvers throughout the World.

hamlet
CRAFT TOOLS

Sheffield England

Now
available in the
Glenn Lucas range of
products

M42 Stay Sharp HSS

M42 Turning Tools

Stay Sharper - Longer

Now available: 1/4"; 3/8"; 1/2" Bowl Gouges; 3/8"; 1/2" Spindle Gouges
with red-ferruled ash handles, or unhandled, at prices you can afford

Live The Dream - Talk to your Hamlet or Henry Taylor Stockist - TODAY!

Spring Cleaning

By

John Morgan

Hi Graham

I have been having a spring clean on one end of the workshop perhaps this may inspire others to get out to the workshop in this time of lockdown.



Kumihimo

By
Colin Grundy

This project satisfies two of my hobbies, wood turning and knot tying. *Kumihimo* is the Japanese art of braiding cords on a stool known as a Maru Dai and has been around for centuries. The word *Kumihimo* means 'the gathering of threads'. My project was a little more elaborate than the standard Maru Dai, in that it incorporated other special discs to create designs of different cross sectional areas, known as sennits. A bit like braiding by numbers. Braids are created by moving cords around a central point in set patterns. The outer ends of the cords are wound around weighted bobbins with the inner ends attached to a counterweight in the centre. As the braid grows, it extends through the central hole below the stool top. Depending on the number of cords used and the sequence with which they are moved,



this
deter-
mines
the final pattern of the braid.

Braiding stool with Maru Dai top.
Maru Dai means "Mirror"



Maru Dai with cords set up for simple 8-strand layout.

The original idea for the braiding stool was published in a book by Clifford W Ashley, known as the *Ashley Book of Knots* (1944), using the bottom of a peach basket and broom stales. In fairness, I used a variation of a design published in *Knotting Matters*, the magazine of The International Guild of Knot Tyers.



The stool is made from Sapele, with a solid base and a collar, recessed to take different discs. These were turned using the club lathe. Four legs, from Merante are fitted with a screw thread at the top and a tapered fit to the base. This allows for easy disassembly should it be necessary to pack the stool away. The screw threads were made using a $\frac{3}{4}$ inch screw box and tap.

The braiding tops were all turned from $1\frac{1}{4}$ inch Oak planks. The Maru Dai is a plain disc, 10 inches in diameter with a curved edge and recessed towards a $1\frac{1}{2}$ inch hole in



Setup with braiding top for a more complicated layout.



A braiding top with two reducers alongside.

mihimo, is to move the cords – usually in multiples of four, i.e. 8, 16, 32 etc. in set patterns.

The remaining tops, are all of 7 inches diameter, with a 2 inch centre hole. They have a shallow dome towards the centre, and the same $\frac{1}{4}$ inch spigot on the bottom. Two reducers were turned to fit the 2 inch hole and reduce it to either $1\frac{1}{2}$ or 1 inch as

the centre. The base of the disc has a $\frac{1}{4}$ inch spigot to fit the collar of the stool. The technique with Japanese *Ku-*



Stool minus tops, showing the locating recess.



TIMBER | TOOLS | MACHINERY | HOBBIES | GIFTS

**All events at Yandles have been cancelled up until
26th June 2020**

26th June 2020 Martin Saban-Smith, creator of Hampshire Sheen, will be here on Friday 26th June 2020 between 5:30pm-7:30pm

We're proud to announce Martin Saban-Smith, creator of Hampshire Sheen, will be here on Friday 26th June 2020 between 5:30pm-7:30pm as part of our VIP HOURS! Martin will be hosting a FREE demonstration "Excellence in Finishing" in store here at Yandles. Martin will be using the range of Hampshire Sheen products throughout the evening. The demonstration is completely FREE to attend & booking is not required however; seating is limited so we would advise getting in a little earlier! The Toolshop & self-selection timber centre will be open as throughout the evening & there will be the opportunity to purchase at one-off sale pricing!

The last Friday on EVERY month Yandles will be open between 5:30pm-7:30pm hosting VIP HOURS! Take advantage of exclusive, one-off deals available strictly for 2-hours only! A different demonstration / focus on specific product lines will take place in store between these hours as well as the chance to purchase at one off sale pricing!

Come down to Yandles Friday evening & watch the FREE demonstration, pick up some great tips, meet the man behind the popular brand Hampshire Sheen & Black Dog Workshop & pickup some one-off special offers!

If you need to contact us its
Yandles, Hurst Works, Martock TA12 6JU, 01935 822207
(option 1 for the Woodworking and Timber Shop)
or email . Sales@yandles.co.uk Website: Yandles.co.uk



Turning up the bobbins in the outdoor workshop.

pattern required anything from 8 to 80 cords can be used. The patterns for the discs were created on the computer, and transferred to the wood through the paper print. A jig was then made to hold the disk at an angle on the bench drill, and



In use as an occasional table.

the disc rotated to the position necessary for drilling.

The spaces on the discs are marked by

pyrography, kindly carried out by Alison Elliott.

All the discs and the stool parts were finished with sanding sealer and Chestnut wax polish.

required. The difference between these and the Maru Dai disc, is that they are marked with a series of evenly spaced holes around their circumference. The holes are drilled to take small brass pegs (model makers rivets), and the cords lie in the spaces between. Depending on the



A lead cast weight ready to be fitted into the bobbin.



THE MAIL ORDER ABRASIVE SPECIALISTS

Sanding needs as much care as construction and design. As much care needs to be taken in sanding as in the construction of a piece of work. A few minutes poor sanding technique can irreversibly destroy great craftsmanship and many hours work.



THE ULTIMATE ABRASIVE! RB406 J.FLEX. TRIAL PACK

1M OF CLOTH IN EACH OF THE FOLLOWING GRITS.

P80, P120, P240 AND P320 **£14.75** INC VAT ORDER CODE **12806 RB406**

J.Flex is the best abrasive for every workshop. It's ideal for turning, woodworking and metal working. The distinctive blue abrasive with the yellow backing is the softest and most flexible abrasive we have ever discovered. The ultimate abrasive for all kinds of woodwork, especially sanding in acute areas. This cloth can be twisted and folded without grain dis-adhesion. Rolls are 100mm wide. **ALSO AVAILABLE BY THE METRE.**



VELCRO-BACKED ROLLS.

TRIAL PACK 1M OF P100, P150, P240 AND P320 PLUS A SAMPLE STRIP OF VELCRO REPLACEMENT WITH PEEL OFF SELF ADHESIVE BACKING. **£14.75** INC VAT ORDER CODE 13159 ALSO AVAILABLE BY THE METRE. PLUS - IT PAYS TO BUY BIG.

WITH OUR BULK RATE PRICES YOU'LL SAVE MONEY ON THE GRITS YOU USE MOST.

Cut off any length to suit your own sanding application. Every workshop should have at least two or three grades of this to hand. Especially manufactured by Hermes abrasives for us. Ideal for those shop made sanding devices which you can now make to your own specification. Hook and loop, or velcro attachment does away with the unpleasant task of clamping the paper to the machine, allows rapid changing of the sheet and encourages the use of more grits extending the finish quality and life of the abrasive. Rolls are 115mm wide.

For your free catalogue call 01636 688888 or e-mail sales@abrasivesplus.com or visit our on-line shop at www.abrasivesplus.com where all our products are featured and it's free carriage!

CSM ABRASIVES PLUS UNIT 2 NORTHERN ROAD, NEWARK, NOTTINGHAMSHIRE, NG24 2EH



From start



... to finish



Serving and supporting Coombe Abbey Woodturners

The ToolPost

Unit 7 Hawksworth, Southmead Industrial Park, Didcot, Oxon. OX11 7HR
01235 511101 www.toolpost.co.uk tour: <http://goo.gl/maps/PsjFa>

sharing expertise



A selection of braids created using the Maru Dai.

The next task was to make sufficient bobbins to carry the cords. Fortunately I have a good stock of ash, foraged from along the canal bank, so this was cut to size and turned to the required diameter depending on the weight of the final bobbin. As there is insufficient weight in the wood itself, additional weight is introduced into the centre, using either brass rod or lead. Fortunately, turning the outside of the bobbins was something I could carry out on my mini lathe, but boring out the centre with a Forstner bit caused it to stall, so it was back to the club lathe to save

the day. With the heavier bobbins, I melted lead into copper plumbing fittings. The bobbins were bored out to take the fitting and the end capped with Sapele turned across the grain.

The counterweight is made from large diameter washers. As a guide, the counterweight needs to be about half the total weight of the bobbins, so sufficient washers are placed onto a sort of inverted mushroom that is then hooked onto the cords beneath the stool.



The author receiving tuition from fellow IGTK member, Europa Chang-Dawson

One final part that did not form part of the original project was a solid top to allow the stool to be used as a small side table. We live on a narrowboat, so space is limited and wherever possible furniture has to be multi-functional. A suitable piece of walnut was obtained from Steve Slack at the *Festival of Crafts* and this was turned to fit the top of the stool. A decoration of a three part Turk's Head knot is inset around the edge to set the whole thing off.

The project took some three months to get to a usable stage, but is one of those ongoing affairs as I am still adding extra bobbins along the way. ■

Introducing the Brand New Range of Woodturning Chucks and Jaws

We are extremely proud to introduce the brand new range of Record Power woodturning chucks and jaws. This exclusive new range has been developed using Record Power's extensive experience and knowledge of woodturning in conjunction with a group of highly experienced professional and hobby woodturners, to bring you the ultimate in quality, versatility and value.



Precision Engineered Gears

Super Geared True-Lock™ technology ensures high levels of accuracy to provide smooth and solid operation.



Jaw Fixing System

The SC3 and SC4 feature a jaw fixing which will not only fit the Record Power series of Jaws but is also fully compatible with Nova and Robert Sorby brand jaws.



Heavy Duty Jaw Slides

The improved and enlarged jaw slides give unsurpassed holding power and load bearing ability. They are made from high tensile steel, reinforced with nickel and copper and heat-treated to ensure superior strength.



Sealed Backing Plate with Full Indexing

The SC4 features a strong backing plate to protect the gear mechanism from dust and 72-point indexing around the full circumference.



Brand New Exclusive Jaw Range
Fully compatible with Nova brand chucks



See online for full details

SC3 Geared Scroll Chuck Package



SC4 Professional Geared Scroll Chuck Package



RECORD POWER
ESTABLISHED 1909®

www.recordpower.co.uk Tel: 01246 571 020

Over
100
years
Experience • Knowledge
Support • Expertise

RECORD POWER
STAPLETON
CORONET
BURNESS

Incorporating gear cutting standards in manufacturing the finest woodturning machinery and accessories for over 100 years. Full technical and spare parts support. Designed to last, built to work. Durable, reliable and easy to use. Join our network of professional woodturners and enjoy the benefits of our products.

Work by Paul Friar

Hi Graham

How are you and your wife in these odd times. Hope all safe and well.

Probably like yourself I have been staying at home and keeping away from others. If any use here are a few pictures of me staying at home / this years projects so far. I was trying to get ready for all the craft shows that have been cancelled. Still just happy to be playing.

The blue one with the water painting was completed yesterday

Cheers

Stay safe

Paul Friar



PROOPS BROTHERS

ENGLAND • EST 1946

.COM

ALL PRICES INCLUDE POST AND PACKING

1000'S OF OTHER PRODUCTS

INSIDE, OUTSIDE PLASTIC CALLIPERS



Measurements

0 - 200mm M7176

£4.60

0 - 350mm W3509

£6.80

HARDWOOD SQUARES



75mm Hardwood & brass tri-square

W8000 £3.60



Hardwood sliding bezel

W8002 £3.60



Set of 4 Chip Knives W3249

£23

OILSTONE & BOX



£5.50

Fine and
course sides
W3330

CABINET SCRAPERS



Set of 4
W8014

£11

CHUCKS

Drill Chuck Set of 4
6mm 1MT,
10mm, 13mm & 16mm
with 2MT Arbor
Product code M7175
Also available individually



£24

20MM FINGER SANDER

Spring Loaded Mini Precision Sander,
20mm & 3 spare sanding belts .
UK Made Product code W3202
10mm and 40mm widths also available



£4

MAGNIFYING LAMP LIGHT 5 DIOPTER. DAYLIGHT BULB

Product code V5200

£36



Proops Brothers Ltd 34 Saddington Rd. Fleckney, Leicestershire, LE8 8AW
TEL. 0116 2403400 WWW.PROOPSBROTHERS.COM EBAY USER NAME: SPOORP

Pieces of Work

By

John Bradbury

Right:

A segmented vase with a difference including some texturing.



Left:

A beautiful spalted hollowform piece with a couple of fun items.

Calendar of Events

2020

June 6	Clem Ansell Cancelled	Baptist Church
September 3	Roger Gilbert	Shilton
October 1	TBA	Shilton
October 24	Gary Rance	Baptist Church
November 5	Peter Wood	Shilton
December 5	Christmas Party	Baptist Church

*All meetings in **bold** typeface are held in the Walsgrave Baptist Church, Hinckley Road, Coventry, CV2 2EX. 10am to 4.00pm. Others are as shown:-*

Shilton Village Hall, Wood Lane, Shilton, CV7 9JZ (by the Sports Field)

oOo

Annual Raffle Cancelled.

oOo

HENRY TAYLOR TOOLS

&

CHESTNUT FINISHES

Any item from the catalogue can be supplied

15% discount on Henry Taylor tools and

10% discount on Chestnut finishes

for Club members

Ring: Eric Taylor on 02476 328831

Very Sad News

I was sorry to learn that Reg Simms who had been a club member for quite a few years had died recently. Reg was a regular attendee at meetings and always entered his pieces into the Christmas competitions, also he would demonstrate to the public at outside events and at our hands-on meetings. I am sure you will join me in sending our heartfelt condolences to the family at this sad time. I have reproduced below the email received from Reg's grandson.

Editor:

My Grandad used to be a member at your club. His name was Reg Simms. I think it has been roughly 5 years or more since he has had any involvement.



The late Reg Simms.

I am sad to tell you that Reg passed away due to Covid 19/Pneumonia this Monday night (13/04/2020). Firstly I just wanted to let you know of this sad news, and find out if there is any one there who still remembers Reg?

Reg made some good friends through the club and he enjoyed several happy years there. He thoroughly enjoyed taking part in the competitions and demonstrations. He even taught me some basic wood turning and carpentry skills as I grew up.

— oOo —

Axminster Tools & Machinery (Nuneaton)

All Axminster stores are now closed.

If you wish to order equipment or supplies please use the website below

Website: <https://www.axminster.co.uk>

Items of Work

By

William Randle

Dear Graham. Hope you are keeping safe. My Name is William Randle one of the new members of Coombe Abbey Woodturners. As you have asked to see what we have been turning while in this lockdown, I thought you might like to see my latest projects, the segmented bowl is made from Oak, African Blackwood, Beech, and Mahogany, I think there is some Bubinga in it as well.

The other bowl is Cedar wood, the outside is done with a red wood dye then several coats of lacquer and a wax polish. Both bowls are about 8" dia.

Best regards W. Randle. (Bill)



————— oOo —————

One Line Philosopher:
If you have a good idea or thought, make it the foundation stone to build on.

Let TMS look after your Volvo



SALES // SERVICE PARTS // ACCESSORIES

With over 300 years combined experience of working with Volvo, nobody knows your Volvo like **TMS**.

With award-winning levels of customer service and state-of-the-art facilities at Trinity Marina, what ever your Volvo requirements, the **TMS** team can deliver.

**Call in and
see us soon!**



QUALITY • CARE • PERSONAL SERVICE



TMS VOLVO HINCKLEY

Trinity Marina, Coventry Rd,
Hinckley, Leicestershire LE10 0NF

TELEPHONE: 01455 632478

www.tmsmotorgroup.co.uk/volvo

Childs Chair in Ash

Forwarded by Martin Hitchiner

Hi Graham

Giles Headley sent this me this photo. The Child's chair is made from Ash, this is from Coombe Abbey park it was milled for the club at the very first festival of crafts in 2014. This is what I wrote on the Facebook page and Instagram page.

Hi everyone in these difficult times. I received this photo from a member of the club. It was made from a fallen ash tree from Coombe Abbey park estate in 2014 when we as a club started the "Festival of Crafts". So this small child's chair has a lot of history behind it. So thank you for making the chair and please don't hesitate to send photos of your work to

www.coombeabbeywoodturnersclub.net , keep turning and keep safe



oOo



Alec Steedman says this is his wife Jill on lock down having a go at Pyrography. Well does this mean I've lost the machine?

Turners Retreat
THE WOODWORKERS SOURCE

Craft Supplies
BE INSPIRED, BE CREATIVE

Nick Agar
SIGNATURE
SERIES



Now available
at
Turners
Retreat



PETER CHILD ARTIST'S PYROGRAPHY MACHINE

*Create beautiful textures,
designs and patterns.*

- Slim, light and comfortable pen design
- Perfect for precise detailed work
- Cool running handle for comfort
- Warms from cold in 2 seconds
 - Excellent reliability
 - Incredible durability

*'I use it every day, its durability is
nothing short of amazing – it's
perfect for me and my students.'*

Bob Neill

Professional pyrographer and teacher

Craft Supplies
A product by... BE INSPIRED, BE CREATIVE

Gavel and Block

By

Alec Steedman

On lockdown, what have you been turning? Well I've been having a go at a gavel and block. The first thing was the head which I started before the lockdown with my friend John Morgan looking over me. The second task was the handle, in my shed. Just to let you know my shed leans to one side and air conditions coming at me but that can't stop me.

The third task was the block which is a story on it's own, after putting it in the chuck and away I went but silly me I didn't put the tail stock up to my work. Yep you know what's next it wobbled around and came off, but my good friend Pat came to the rescue. Once I phoned him up he sorted it for me. After a week or so it was finished.



This is going to the new refitted pub which my daughter Ange will be landlady of when everything gets back to normal.

It will be called the "Auction House" in Tile Hill instead of it being known as the Bell.

Work by John Whittle

Hi Graham

Hope you and Marcia are keeping well. We are self-isolating and finding plenty of jobs to do around the house and garden. Please see attached a few photos of some recently completed "work". The witch item was made to entertain my great grandson, Thane, whose favourite book is "Room on the Broom"

Best Wishes

John Whittle



Witches Mushroom House Detail



Witches Mushroom House



Oak Dish and Needle Boxes in Sycamore

*New
Product*

charnwood

*New
Product*

Woodworking machinery at its best!

B250 10" Premium Bandsaw



**New Premium Grade 10"
Woodworking Bandsaw ideal for
woodturners**

- Huge 6" Cutting Depth Capacity - 10" Cutting Width (Throat)
- Supplied with High Quality British Made Blade
- Precision Ground Cast Iron Work Table
- Quick Action Lock On Rip Fence - Crosscutting Mitre Guide Included
- Quiet Induction Motor
- Mains Powered LED work Light - Integral Dust Collection Tray
- Includes Floorstand
- Primarily used for Woodworking

£299

Also available

B300 12" Premium Bandsaw £459

B350 14" Premium Bandsaw £579

Now in stock & on display in our
Leicester Showroom

For our full range of Bandsaws
call 01530 516926 for your FREE catalogue
or visit our website www.charnwood.net or showroom at
Cedar Court, Walker Road, Bardon Hill, Leicester, LE67 1TU

Work by John Morgan



Hi Graham

Just finished this phone in dark wood for a NHS worker after she saw the light wood one on Sara's desk that I had made for her.

The gold on both phones is Gold leaf.



More work by John Morgan

Hi Graham

Firstly the press.

Here is my first attempt at a basic segmented vase. I used all cheap soft wood plywood, pine etc except the dark wood I had from you (thank you again) and the Sapele base).

Overall I am pleased with its outcome (stolen by Sara for her Flowers well before I had it finished).

I learnt a lot from the exercise and

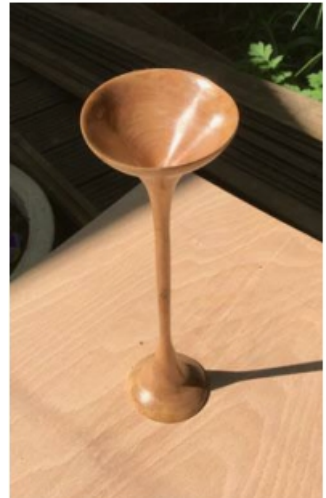
next time will segment the base as well although it looks good.



This morning I turned a tall glass from damp Cherry about 16% on my meter which we chopped down 18 months ago. The top end is that thin it warped before I had finished it.

After that I started a Jewelled box for Sara which will have 3 rings of Putty (two in the body one in the lid) then when I have finished it Sara will stick some Jewel on it from her Craft making bits.

Regards
John.

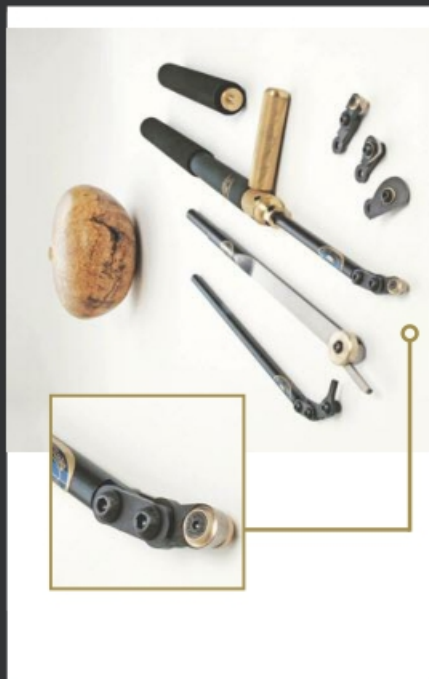


INTRODUCING THE NEW REVOLUTION

The "revolution" is a completely new hollowing system from the world leaders in fine turning tools. From its beautifully weighted handle to its cryogenically treated cutting tips the "revolution" is designed to be the finest hollowing tool on the market.

The modular articulated design allows the woodturner the freedom and flexibility to configure the tool for any situation. From straight vases to heavily undercut hollow forms the "revolution" has it covered.

At the heart of the "revolution" is the new fully depth adjustable "super ring" the revolutionary design of the "super ring" ensures clean efficient wood removal at all times with 5 different cutting tips and modular articulation design the revolution is a must have tool for all woodturners.



- Supplied with 5 different cutting tips for unrivalled flexibility.
- Clever modular design allows for many different configurations.
- All collars and collets beautifully machined from solid "marine grade" brass billet.
- High performance cryogenically treated cutting tips for vastly improved wear resistance.
- New adjustable "Super ring" allows ultra efficient wood removal without clogging.
- Slim line articulated tip design for unrestricted access to those hard to reach cuts.
- Expandable.
- Hand made in Sheffield, England.



Tel. 0114 261 2300

Fax. 0114 261 2305

Web. www.crownhandtools.ltd.uk

Email. info@crownhandtools.ltd.uk

Little Sister

Big on Performance

Little Sister is a mini hollowing tool based upon the highly successful Brother System 2 range

Talk with your Hamlet
Stockist today

Compact fixing screw
Hollow through 13mm
openings with ease!

Tapered Stem
for maximum rigidity

Proudly
Made in the UK

DVD
VIDEO
Free DVD
included

3 configurations available



hamlet
CRAFT TOOLS
sales@hamletcrafttools.com
www.hamletcrafttools.com
+44(0)1142321338

Ask about the interchangeable scraper - Ref HS187B

Work by Pat Flynn

Good Afternoon Graham and Marcia,
Hope you are coping with this terrible Pandemic.
Whilst I am in isolation, I have mastered a few new challenges from ideas I have found on the 'net' and feel they may be of interest to you when you are compiling the next newsletter

1) WALL HANGING - 700mm x 500mm - Wood used: Sapele/Sycamore/Walnut - Total No. of segments - 364

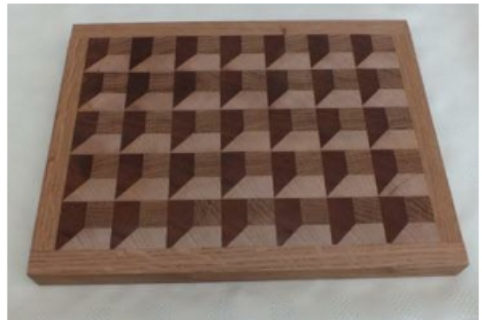
The piece is called "Insane 3-d Wood-Art" by "The Family Woodworker"

I may have made life difficult for myself as I did not totally follow the original instructions given. I cut it from individual segments



2) CHOPPING BOARD - 355mm x 25mm

I also got this from the "Net" - this piece was relatively easy - the woods I used were Oak/Sapele/Sycamore.



The other pieces: (3 yew pieces and 1 cherry are from trees cut down in January, 2020 - This gave me a new challenge, turning wet wood. I rough turned the pieces, then microwaved them - the pieces were completed from start to finish over the period of a week





Beautifully
crafted
from top
to bottom

Crown Carbide Pro Turning Tools

Exclusive to Axminster



Codes: 106062/3/4

Prices from **£95.95** inc vat

These premium quality tools from Crown have been designed, researched and tested to give professional results. Pre-sharpened to an almost razor-like sharpness, they can be used straight from the box. Each tool has a solid feel, but is not so heavy as to be cumbersome and fits comfortably in the hand. Plus, they are equally effective for turning wood, acrylic, polyester and resin. Perfect for the beginner or the seasoned pro.

Three tip options:

- 15mm round cutter for hollowing out
- 15mm with diamond point for detailing
- 15mm radius square for roughing work to shape

Supplied with a hex key and spare machine screws. Replacement tips are available.

“The tips are made from the finest nano-particle carbide that is hardened to 93HRC; this makes them ultra long-lasting”

Crown Hand Tools

To find out more visit our **Nuneaton Store**

AXMINSTER

Tools & Machinery

Hamilton Way, Bermuda Trade Park, Nuneaton,
Warwickshire CV10 7RA Tel: **02476 011402**

Monday - Friday **8am - 5.30pm** and Saturday **9am - 5pm**

Prices may be subject to change without notice.



Trusting this may be of help as an infill to the newsletter - should you require any further information on the above pieces, do not hesitate to contact me
Regards to you both -
KEEP SAFE

Pat & Ann ■



See
US Stockist
Enquiries Welcome.
Tel/Fax 888-631-8311

Lacquers

•
Polishes

•
Waxes

•
Polish Enhancers

•
Wood Treatments

•
Polishing Brushes

•
Abrasives

•
Stains

•
Thinners

•
Applicators

•
Superglues

•
Buffing Systems

•
Acrylic Blanks

•
...and much more



CHESTNUT

P A O D U C T S

first for finishes



Used by woodturners of all abilities throughout the UK and the world, the Chestnut Products range of top quality finishes gives outstanding results every time; whatever you are making and whatever your preferred finishing system there is bound to be something in our range to meet your needs.

*See your local stockist for more information
 or for a catalogue/price list contact us at:*

Chestnut Products

**PO Box 260, Stowmarket,
 IP14 9BX**

Tel: 01473 890 118 Fax: 01473 206 522

**www.chestnutproducts.co.uk
 mailroom@chestnutproducts.co.uk**

Stockist enquiries welcome

Work by Terry Ivins

Hi Graham, last week I had a call from Brian Edwards and part of the conversation was around sending you pictures of work to help with the newsletter so to break the day up I went in to the studio " my shed " and I delved into my Scrap, off cuts box and I have had a go at a couple of things, needless to say that there are now a few more scrap bits in the bin. It was perhaps no surprise that the "Touch" was not there and a few curses and genuinely only one flying piece, honest guv!, Ironically the trajectory of the said piece took it straight into the scrap box, think it had been abused enough and wanted out.

The first piece was a piece of pine and I did something that I saw on YouTube which is a offset hollow form and that in itself is a bit of an exaggeration as there really is not any hollowing but it was a bit of fun,

I thought this could be something that would easily be used as a charity sale item so as can be seen I took the opportunity to brighten it up with a bit of colour. The effect was created with metallic paints which had added to the colours a few drops of flow medium and the effect was created by wrapping the painted area with cling film.



These pictures show two small bowls one out of Yew and the second from a piece of Beech, the Yew as is the way when



turning yew you never know what is going to appear from the wood in terms of grain pattern, although only a small piece 130.00 x 50.00 mm the piece was well worth the time and effort. The second bowl as mentioned is a piece of beech and ended up with again a small simple bowl this time being 150.00 x 50..mm.



This piece truly is out of the scrap box apart from the inlays , I have no idea what the wood is that the main part of the body is made from however the band at the large diameter is a piece of mahogany, each side of the band the inlays are made up of copper,

opal dust and brass. The top is again Mahogany with another two inlay bands this time just Brass, the spacer



for the handle is from a pen blank and is Ebony, the handle itself is African Black wood, yet again from a pen blank offcut.

I made this as I already have a piece of ceramic that was given to me while I was working in Japan some years back. The piece is made using Beech for the body and the top is yet again Mahogany. The overall size is 120.00 x 100.00, the Handle is made using a spacer of Pink Ivory and the bar from African Black wood with the two end pieces again made using Pink Ivory.



It is OK Graham you can relax this is the last one.

This is a piece of Mahogany which is 220.00 x 40.00 mm a very simple bowl with a broad rim, the bowl itself only being 70.00 in diameter but it is gilded to give a contrast and a lift to the piece. At the mid point of the rim although a nice piece of wood I thought it needed

something, so I put an inlay of crushed stone, opal dust and a little copper.

I am pleased with the outcome of this piece and have an order for a slightly bigger piece.

Graham as always feel free to use these if they are of use to you. I hope you are well at the moment , Best wishes

Terry ■





Lidded Maple leaf Hollow Form by John Whittle