

# NEWSLETTER

August

2020



This Months Sponsors

**The ToolPost**

Didcot, Oxon. 01235-511101



[www.toolpost.co.uk](http://www.toolpost.co.uk)

**RECORD POWER**

ESTABLISHED 1909®

### **DATA PROTECTION**

Your personal details are held on a computer belonging to an officer of the Coombe Abbey Woodturners. Your details are purely for the use of the Club, and are not passed to any third party. If you object to your name, address and telephone number being held on a computer belonging to an officer of the Club, then please write to any member of the committee.

### **HEALTH & SAFETY NOTICE**

Woodturning can be dangerous! Always follow the manufacturers' instructions and safety advice when operating power tools. Never try the techniques shown at our demonstrations or in our Newsletter if you are unsure or the procedure does not feel safe. Always use the guarding and other safety equipment.

The Club takes reasonable care to operate and instruct in a safe manner and strongly recommends all members to follow the Club's Health and Safety rules and the guidance notes that the AWGB issue in their Revolutions magazine from time to time.



Website: <http://www.coombeabbeywoodturnersclub.net>

## In This Issue Page

|                             |     |
|-----------------------------|-----|
| Chairman's Jottings.....    | 4   |
| One Line Philosopher.....   | 4   |
| Work by Brian Edwards.....  | 5   |
| This Months Sponsors.....   | 6&8 |
| Work by John Whittle.....   | 10  |
| Work by Tom Badger.....     | 12  |
| Covid 19 Preventative.....  | 15  |
| Notices.....                | 18  |
| Your Club Needs You.....    | 19  |
| Work by Pat & Ann Flynn.... | 20  |
| Work by John Morgan.....    | 22  |
| Work by John Martin-Law.... | 26  |
| Work by Paul Fryer.....     | 28  |
| Lathe for Sale.....         | 31  |
| Axminster Store.....        | 33  |
| Lathe for Sale.....         | 35  |

## Advertisers Page

|                               |    |
|-------------------------------|----|
| The ToolPost.....             | 7  |
| Record Power.....             | 9  |
| Proops Brothers.....          | 13 |
| TMS Volvo.....                | 14 |
| Turners Retreat.....          | 16 |
| Charnwood.....                | 17 |
| Crown Hand Tools.....         | 21 |
| Henry Taylor/Hamlet Tools...  | 23 |
| Axminster Tools & Machinery   | 24 |
| Chestnut Products.....        | 29 |
| Henry Taylor/Hamlet Tools.... | 30 |
| Yandles.....                  | 32 |
| CSM Abrasives Plus.....       | 34 |

## From the Editor



I am sorry if you are receiving this edition of the Newsletter a little later than usual but things have been hectic for me to say the least. I have been away for a weeks holiday in Somerset where I hasten to add I did make it to "Yandles" and spent a little money on essentials.

After returning home I started to work on the newsletter but had to abandon that when my eldest son and family came to stay. The day they left my daughter came to stay for a few days and only when she left to go home did I manage to finish the work on the newsletter, (Thursday 30th July).

Once again I am indebted to club members for supplying me with pictures of their work as without that I am afraid there just would not be a Newsletter at all. So if you have not contributed yet then please try to get some pictures to me for the September issue, it does not have to be your current work we would all just like to see what you have been up to over past years.

The committee are talking to the Coombe management to see if they can open the workshop in the near future so watch this space and check your emails to see when this can happen. It will be subject to certain restrictions though, to ensure everyone's safety.

Graham

## Chairman's Jottings

A brief outline to all our members as to how things are going this year.

When we get permission to re-open the workshop we will all have to adhere to the council guidelines.

- 1) Social Distancing
- 2) Face masks at all times
- 3) Hand cleanser will be at the door
- 4) Only 4 members in workshop at any time

There will be no tutoring until further notice  
I Hope everyone is agreeable to all the rules

On the bright side Axminster is now open with the same conditions we all have to follow.

I'm hoping this finds you all well and I'm looking forward to seeing you all once we get a date from the council.

Onwards and upwards and keep turning.  
Keep Safe  
*Brian.*



Brian Edwards

---

oOo

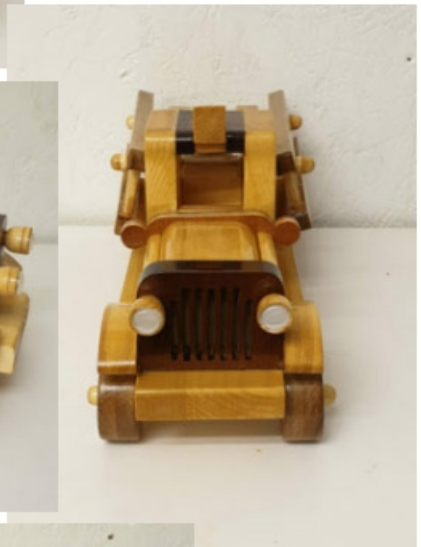
---

*One Line Philosopher:*

Many mistakes look stupid with hindsight, foresight is usually less clear.



## Work by Brian Edwards



## **This Months Sponsor**

### **Background Information - The ToolPost ([www.toolpost.co.uk](http://www.toolpost.co.uk))**

---

The ToolPost is a business established by a woodturner, run by a woodturner and staffed by woodturners. Even our accountant can put a screw into a piece of timber fairly straight (it's OK, he's a subcontractor, not an employee!). Our aim is to supply woodturners with easy access to quality tools through the Internet ([www.toolpost.co.uk](http://www.toolpost.co.uk)), mail order and telephone sales (01235-511101).

We also have a substantial and well-stocked showroom in Didcot, close to the A34 trunk road, where, for instance, more than a thousand different woodturning tools are on display - that's more, we believe, than anywhere else in the world under one roof!

We stock tools from major brands, including Henry Taylor, Hamlet, Robert Sorby, Crown Tools and Ashley Iles as well as smaller, more specialised manufacturers such as BCT Tools, Beall Tool Co. (USA), Kelton Tools (New Zealand), U'Beaut Finishes (Australia) and many others. In addition we stock the myriad other workholding, accessory, tooling, finishes, adhesives, abrasives, safety equipment and sundry lines required by the avid woodturner.

We are proud to be the UK distributors of the high performance woodturning lathes produced by WivaMac in Belgium. We distribute Beall Wood Buffing Systems from the US, Shellawax finishing products and Kelton (Kel McNaughton) specialist turning tools from "down-under" and market CamVac and Microclene dust extraction systems. We are the creators of the unique Versa Chuck and its lower cost cousin, the Model T chuck. We are also the producers of BCT Tools. One of our most recent ventures has been the sourcing of a superb new pen-making material, "Tigerwood", which is attractive, robust, durable and very colourful.

Knowing that turning is often also about learning we also import directly many different DVDs, mainly from the USA, such as the ranges by Mike Mahoney and Cindy Drozda, as well as a wide range of the better UK titles. In fact, Les Thorne's first DVD "No Turning Back" was shot in our training and demo facility, here at the showroom.

We are passionate about woodturning and are keen to share that enthusiasm with you. We have enjoyed visits from Coombe Abbey Club members many times and look forward to welcoming you in the future, be that in person, by telephone or through the internet. Good luck and "Happy Turning" to you all!



From start ....



... to finish



## Serving and supporting Coombe Abbey Woodturners

# The ToolPost

Unit 7 Hawksworth, Southmead Industrial Park, Didcot, Oxon. OX11 7HR  
01235 511101 www.toolpost.co.uk tour: <http://goo.gl/maps/PsjFa>

*sharing expertise*

## **This Months Sponsor**

Record Power has a long and impressive history. Established in Sheffield, the heart of the UK's steel industry, and stretching back over 100 years, we enjoy an enviable reputation for creating high quality tools through our many years of experience and unparalleled knowledge in manufacturing and design. Our policy of continual improvement and development has seen us remain at the forefront of tool manufacturing whilst also acquiring and developing such brands as Coronet of Derby and Burgess from Leicester. In addition, our industrial brand, Startrite, also has a long history of providing high quality, durable machinery to the trade professional and various features of these machines are the inspirations behind aspects of many Record Power machines.



The Record Power head office and distribution centre is now based in the heart of the UK at Barlborough, a few short miles from our Sheffield roots and very close to junction 30 of the M1. Some of our staff have been with us for up to 40 years, ensuring we still retain and pass on our in-depth knowledge and expertise in hand and machine tool manufacturing and use. This gives us the distinct advantage of being able to continue to design, develop and source a comprehensive and wide ranging selection of premium quality products to meet the needs of discerning woodworkers. We work with carefully selected trading partners from the UK, Europe and Far East to provide the best quality products possible as well as continuing to manufacture some products in the UK.

# Introducing the Brand New Range of Woodturning Chucks and Jaws

We are extremely proud to introduce the brand new range of Record Power woodturning chucks and jaws. This exclusive new range has been developed using Record Power's extensive experience and knowledge of woodturning in conjunction with a group of highly experienced professional and hobby woodturners, to bring you the ultimate in quality, versatility and value.



## Precision Engineered Gears

Super Geared True-Lock™ technology ensures high levels of accuracy to provide smooth and solid operation.



## Jaw Fixing System

The SC3 and SC4 feature a jaw fixing which will not only fit the Record Power series of Jaws but is also fully compatible with Nova and Robert Sorby brand jaws.



## Heavy Duty Jaw Slides

The improved and enlarged jaw slides give unsurpassed holding power and load bearing ability. They are made from high tensile steel, reinforced with nickel and copper and heat-treated to ensure superior strength.



## Sealed Backing Plate with Full Indexing

The SC4 features a strong backing plate to protect the gear mechanism from dust and 72-point indexing around the full circumference.



**Brand New Exclusive Jaw Range**  
Fully compatible with Nova brand chucks



See online for full details

SC3 Geared Scroll Chuck Package



SC4 Professional Geared Scroll Chuck Package



**RECORD POWER**  
ESTABLISHED 1909®

www.recordpower.co.uk Tel: 01246 571 020

Over  
**100**  
years  
Experience • Knowledge

RECORD POWER  
STANTON  
CORONET  
BURGESS

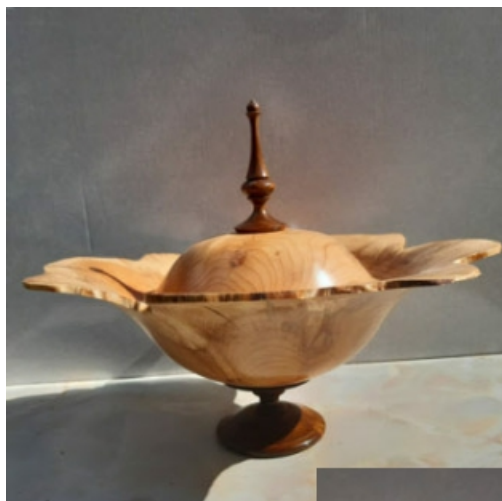
Record Power products are available in a wide range of sizes and specifications. For more information, please contact your local Record Power distributor or visit our website at www.recordpower.co.uk. Record Power products are available in a wide range of sizes and specifications. For more information, please contact your local Record Power distributor or visit our website at www.recordpower.co.uk.



## Work by John Whittle



Pictures on this page are of John's "Tree Burst Vessel"  
On the left is a close up of the lovely carved Lid.



John's Grandson Thane, visits "Stick Man" at home (a "converted" wooden tree stump with a front



## Work by Tom Badger



# PROOPS BROTHERS

ENGLAND • EST 1946

.COM

**ALL PRICES INCLUDE POST AND PACKING**

**1000'S OF OTHER PRODUCTS**

## INSIDE, OUTSIDE PLASTIC CALLIPERS



Measurements

0 - 200mm M7176

£4.60

0 - 350mm W3509

£6.80

## HARDWOOD SQUARES



75mm Hardwood & brass tri-square

W8000 £3.60



Hardwood sliding bezel

W8002 £3.60



Set of 4 Chip Knives W3249 £23

## OILSTONE & BOX



£5.50

Fine and  
course sides  
W3330

## CABINET SCRAPERS



Set of 4  
W8014

£11

## CHUCKS

Drill Chuck Set of 4  
6mm 1MT,  
10mm, 13mm & 16mm  
with 2MT Arbor  
Product code M7175  
Also available individually



£24

## 20MM FINGER SANDER

Spring Loaded Mini Precision Sander,  
20mm & 3 spare sanding belts .  
UK Made Product code W3202  
10mm and 40mm widths also available



£4

## MAGNIFYING LAMP LIGHT 5 DIOPTER. DAYLIGHT BULB

Product code V5200



£36

Proops Brothers Ltd 34 Saddington Rd. Fleckney, Leicestershire, LE8 8AW  
TEL. 0116 2403400 [WWW.PROOPSBROTHERS.COM](http://WWW.PROOPSBROTHERS.COM) EBAY USER NAME: SPOORP

# Let TMS look after your Volvo



## SALES // SERVICE PARTS // ACCESSORIES

With over 300 years combined experience of working with Volvo, nobody knows your Volvo like **TMS**.

With award-winning levels of customer service and state-of-the-art facilities at Trinity Marina, what ever your Volvo requirements, the **TMS** team can deliver.

**Call in and  
see us soon!**



**QUALITY • CARE • PERSONAL SERVICE**



**TMS VOLVO HINCKLEY**

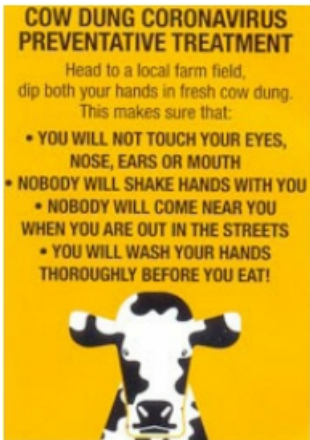
Trinity Marina, Coventry Rd,  
Hinckley, Leicestershire LE10 0NF  
**TELEPHONE: 01455 632478**

**[www.tmsmotorgroup.co.uk/volvo](http://www.tmsmotorgroup.co.uk/volvo)**

## Two more pieces of Work by Tom Badger.



oOo



Left:

This was sent in by Phil Steele. I am not sure whether he has tested it out to see if it really works but in future I will personally be giving him a lot of space? *Editor.*



# 3-Piece Mini Carbide Turning Tool Set

The Mini Carbide Turning Tool Set is ideal for turning small projects, such as boxes and goblets, and is also extremely useful for turning pens in wood and acrylics. The set consists of three tools, each with a rubber handle for extra grip and comfort to reduce fatigue. The carbide cutters will stay sharp for a long time and when required, they can be rotated to give a fresh edge or can simply be replaced. Each tool features its own cutting profile; round, square and diamond-shaped, perfect for roughing out, finishing and fine detail work.



*"This set is really good and exceeds my expectations. A good selection of tools presented in a robust carry / storage case. Really good value for money."*

**Price: £74.95** inc. vat



**Code: CTT1**

Prices may be subject to change without notification.

Scan the code to watch the tools in action.



**www.turners-retreat.co.uk**

01302 744344 | [eshop@turners-retreat.co.uk](mailto:eshop@turners-retreat.co.uk)

2 Faraday Close, Harworth, Nottinghamshire, DN11 8RU



*New  
Product*

**charnwood**

*New  
Product*

*Woodworking machinery at its best!*

## **B250 10" Premium Bandsaw**



**New Premium Grade 10"  
Woodworking Bandsaw ideal for  
woodturners**

- Huge 6" Cutting Depth Capacity -
- 10" Cutting Width (Throat)
- Supplied with High Quality British Made Blade
- Precision Ground Cast Iron Work Table
- Quick Action Lock On Rip Fence -
- Crosscutting Mitre Guide Included
- Quiet Induction Motor
- Mains Powered LED work Light -
- Integral Dust Collection Tray
- Includes Floorstand
- Primarily used for Woodworking

**£299**

Also available

B300 12" Premium Bandsaw £459

B350 14" Premium Bandsaw £579

Now in stock & on display in our  
Leicester Showroom

For our full range of Bandsaws  
call 01530 516926 for your FREE catalogue  
or visit our website [www.charnwood.net](http://www.charnwood.net) or showroom at  
Cedar Court, Walker Road, Bardon Hill, Leicester, LE67 1TU

## Calendar of Events

2020

|                   |                        |                       |
|-------------------|------------------------|-----------------------|
| September 3       | Roger Gibert           | Shilton               |
| October 1         | TB                     | Shilton               |
| <b>October 24</b> | <b>Gary Rance</b>      | <b>Baptist Church</b> |
| November 5        | Peter Wood             | Shilton               |
| <b>December 5</b> | <b>Christmas Party</b> | <b>Baptist Church</b> |

*All meetings in **bold** typeface are held in the Walsgrave Baptist Church, Hinckley Road Coventry CV2 2EX. 10am to 4.00pm. Others are as*

---

oOo

---

## Wood and Tools Sale

Owing to the sad death of John Holton there are a quantity of wood blanks and tools for sale. If you are interested in purchasing any of these items then please contact Eric Taylor who will be arranging said sale at a suitable time in the not too distant future. As you will appreciate we have to be covid-19 safe and inline with government guidelines so it may mean that an appointment will have to be made.

Please enquire via Eric Taylor on **Tel: 02476 328831**

## Festival of Crafts

As part of the sub committee we have decided to cancel the “**Festival of Crafts**” this year. But we are hoping to go ahead with it next year and the date will be Saturday 21st August 2021, this will be a one day event so we can re-launch and bring it back.

*Martin Hitchiner*



**Have you paid your membership for this year?**

**If you have your Coombe Abbey membership card and your  
AWGB membership card then you've paid.**



If not could you contact Janine Brindley as soon as possible because your membership fee helps to maintain the workshop even when we're not there.

Contact best through email [treasurercawt@yahoo.com](mailto:treasurercawt@yahoo.com) or text message to 07931417378. Please do not telephone because of problems at work

**Membership Renewal costs**  
**Individual £18 AWGB + £8 Coombe Abbey**  
**Family £28 + £8 per person =family of two total £44**

## Work by Pat & Ann Flynn



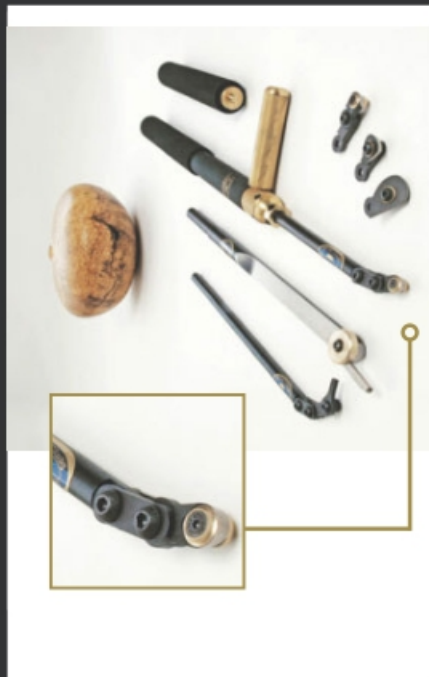
See the back cover for another piece of Pat Flynn's work

# INTRODUCING THE NEW REVOLUTION

The "revolution" is a completely new hollowing system from the world leaders in fine turning tools. From its beautifully weighted handle to its cryogenically treated cutting tips the "revolution" is designed to be the finest hollowing tool on the market.

The modular articulated design allows the woodturner the freedom and flexibility to configure the tool for any situation. From straight vases to heavily undercut hollow forms the "revolution" has it covered.

At the heart of the "revolution" is the new fully depth adjustable "super ring" the revolutionary design of the "super ring" ensures clean efficient wood removal at all times with 5 different cutting tips and modular articulation design the revolution is a must have tool for all woodturners.



- Supplied with 5 different cutting tips for unrivalled flexibility.
- Clever modular design allows for many different configurations.
- All collars and collets beautifully machined from solid "marine grade" brass billet.
- High performance cryogenically treated cutting tips for vastly improved wear resistance.
- New adjustable "Super ring" allows ultra efficient wood removal without clogging.
- Slim-line articulated tip design for unrestricted access to those hard to reach cuts.
- Expandable.
- Hand made in Sheffield, England.



Tel. 0114 261 2300

Fax. 0114 261 2305

Web. [www.crownhandtools.ltd.uk](http://www.crownhandtools.ltd.uk)

Email. [info@crownhandtools.ltd.uk](mailto:info@crownhandtools.ltd.uk)

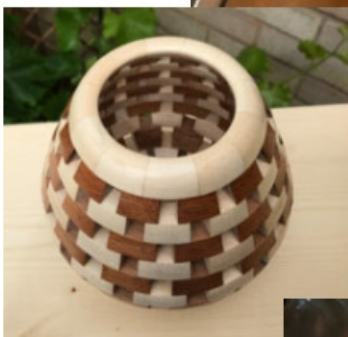
## Work by John Morgan



Above & Right:  
These two pictures show Johns vertical jig for building up open segmented work



Above & Right:  
A brandy glass shaped tea light holder



Left & Right:  
With the tea light lit and showing the rays on the table.



# Little Sister

## Big on Performance

Little Sister is a mini hollowing tool based upon the highly successful Brother System 2 range

Talk with your Hamlet Stockist today

Compact fixing screw  
Hollow through 13mm  
openings with ease!

Tapered Stem  
for maximum rigidity

Proudly  
Made in the UK

DVD  
VIDEO  
Free DVD  
included

3 configurations available



hamlet  
CRAFT TOOLS

sales@hamletcrafttools.com  
www.hamletcrafttools.com  
+44(0)1142321338

Ask about the interchangeable scraper - Ref HS187B





# Evolution is not just a theory

## AXMINSTER EVOLUTION SK114 CHUCK PACKAGE

**Undeniably the best chuck on the market and at the top of its game, the Evolution SK114 Chuck is designed for the true professional and those who aspire to turn like one.**

- Made from stainless steel to resist corrosion and machined to a tight tolerance for a perfect fit of both jaws and lathe spindle.
- The body is machined from one piece of steel to ensure perfect concentricity.
- Compact design keeps the chuck as close to the spindle bearings as possible, ensuring superb resistance to vibration.
- All chucks include dovetail C jaws, matching faceplate ring, screw chuck and chuck key



**The Axminster 5 year guarantee applies to all Axminster precision chucks.**

It's probably one of the most comprehensive guarantees ever.

- Cover includes use in a professional environment
- No registration necessary – just keep your proof of purchase
- Terms and conditions apply – please see [axminstertools.com](http://axminstertools.com)

### NEW PACKAGE



Thread sizes available:

T04M 1" x 8tpi

T38 M33 x 3.5mm

T23 1 1/4" x 8tpi

T02RL 1 1/2" x 6tpi

T38R M33 x 3.5mm

# AXMINSTER

## Tools & Machinery

To see the quality of these products, **visit one of our stores, search [axminstertools.com](http://axminstertools.com) or call 0800 371822.**

For the complete Axminster experience and to keep up with Skill Centre courses, events, news and much more, browse our website or follow us on social media.

Prices may be subject to change without notice.



Rated 'Excellent' on





John's second and much larger vessel



First and second vessels together showing the difference in proportions.



## Work by John Martin-Law

Dear Graham,

I trust you are keeping well and safe and it is difficult to know when we are likely to recover from the current situation and return to normal activities including club meetings. At least the garden and vegetable plot is doing well!

I note that you're still maintaining the club monthly magazine in order to keep things alive and requesting help to fill with interesting details. Therefore I have attached 6 items turned to give as a 'Thank

You' present to people in our small village of Sibson thanking them for the help given to us and other mature residents whilst we are still self isolating.

The first two are made of Sycamore, the first decorated with Acrylic paint with wire burns either side and a slice of unknown wood with the inside stained with yellow dye and, the second decorated with a 'Rub On' transfer and then both polished with

a series of buffing wheels after sealing.

The third one, a box made of Sycamore, is painted with Bronze and Silver metallic Acrylic paint and buffed up too.



The fourth and fifth bowls are made of Cherry the first of them textured with Elf texturing tool and then marked with permanent red marker pen with wire burns either side. The lady climbing a rope, drawn with permanent black marker pen, was to camouflage a crack



- quite effective I thought.

The 6th and last, a shallow bowl made with Mahogany and again

polished using a series of buffing wheels after sealing.

The ladies have all expressed their gratitude and one called round this morning, who received the second vase, stating it in



now displayed in pride of place on their mantle piece and also asked if her sons could see how it was made after Corona Virus has been out to rest.

Regards

John.



## Work by Paul Fryer

I just got back from a holiday in Scarborough. And yes it rained 1 day so I visited the local woodturning shop.

I forgot to take any photos but it was just outside Scarborough down a small country lane and then a dirt track. I met David Lowe a professional woodturner based there and had a good discussion.

I was amazed at their stock of UK woods, it turned out they have their own sawmill. As you can see by the picture, in my opinion quite reasonably priced. These are a few bowl blanks I purchased. If in the area well worth the visit. I have been back on the lathe playing with pens again, this time using burl wood, metal honey-combed & resin, brewing oats, whiskey barrels, cocoa beans, pencils, pine cones, and I have even tried using wood.



I am also in the process of making 2 coffee tables using some tools purchased off of Brian to make the mortices and tenons. 8 frames 4 for each table. I just need to start

gluing up, routing out the windows for the glass, making the tops and making the model railways that will be displayed in them.

So yes a long way to go yet.■

*See*  
**US Stockist**  
**Enquiries Welcome.**  
**Tel/Fax 888-631-8311**

*Lacquers*

•  
*Polishes*

•  
*Waxes*

•  
*Polish Enhancers*

•  
*Wood Treatments*

•  
*Polishing Brushes*

•  
*Abrasives*

•  
*Stains*

•  
*Thinners*

•  
*Applicators*

•  
*Superglues*

•  
*Buffing Systems*

•  
*Acrylic Blanks*

•  
*...and much more*



**CHESTNUT**

P R O D U C T S

*first for finishes*



Used by woodturners of all abilities throughout the UK and the world, the Chestnut Products range of top quality finishes gives outstanding results every time; whatever you are making and whatever your preferred finishing system there is bound to be something in our range to meet your needs.

*See your local stockist for more information  
or for a catalogue/price list contact us at:*

**Chestnut Products**

**PO Box 260, Stowmarket,  
IP14 9BX**

**Tel: 01473 890 118 Fax: 01473 206 522**

**[www.chestnutproducts.co.uk](http://www.chestnutproducts.co.uk)  
[mailroom@chestnutproducts.co.uk](mailto:mailroom@chestnutproducts.co.uk)**

*Stockist enquiries welcome*



# hamlet

## CRAFT TOOLS

Sheffield England

Now  
available in the  
Glenn Lucas range of  
products

### M42 Turning Tools

# Stay Sharper - Longer

Now available: 1/4", 3/8", 1/2" Bowl Gouges; 3/8", 1/2" Spindle Gouges  
with red-ferruled ash handles, or unhandled, at prices you can afford

*Live The Dream - Talk to your Hamlet or Henry Taylor Stockist - TODAY!*

## For Sale - Axminster Perform CCL with Extras



I'm selling my wood lathe and wanted to share it with you before putting on eBay. I've had it for a few years and it's only had light use. It is all in very good condition and well looked after.

As you can see, I have collected many tools, extras and wood that I'm also looking to move on. The photos aren't extensive but show a good amount of the important things, all that are included in the sale.

I'm looking for a fair price and open to offers. It looks like the lathe itself might be worth around £300+. With the newly purchased Axminster chuck, pen mandrel, all of the chisels and wood stock, I imagine £500+ would be reasonable for all of it. But, like I say, I'm looking for a fair price and open to offers and suggestions on selling price. I might even be able to deliver it to someone local. I'd be very happy with a £500 cash sale.

**Contact:- Tim Pritchard on 02476 339438**

**E-mail:- [tpritchard@mecalac.com](mailto:tpritchard@mecalac.com)**



## *Introducing Yandles essentials!*

New for 2020, introducing Yandles essentials! essentials is a core range of quality Woodworking products, all essentials branded products have been sourced with the motto 'If you wouldn't use them, they don't go in the range!'.

Whilst the essentials brand is aimed at being a cost effective, competitive range of products, the quality must remain high!

Purchase with the reassurance that the products have been sourced, tried & tested by the Yandles team, whether your purchasing superglue or a new set of turning tools you can trust the quality of Yandles essentials!

Our expanding NEW range includes:

- Abrasives (Jflex rolls, discs, bowl sanders & sanding belts)
- Adhesives (Superglues, PVA D3, PUR, glue sticks, tapes + a **NEW edition Powdered Resin**)
- Extraction accessories (Range of hose sizes including a power tool reducing kit)
- Finishing / Preparation & repair (Finishing tissue roll, Silicon spray lubricant)
- Measuring / marking (Steel Rules in Metric & Imperial & a range of sizes)
- British Made PPE in association with JSP! (Sonis 1 80-107DB Ear Defenders & 107-112DB)
- AND THE NEWEST ADDITION TO THE BRAND – British Made Woodturning Tools!

Available from [Yandles.co.uk](http://Yandles.co.uk) or call us on 01935 822 207!





## **Axminsters Nuneaton Store has Reopened**

We look forward to welcoming you back -  
measures are in place to keep everyone safe



Bermuda Trade Park, Nuneaton,  
Warwickshire. CV10 7RA

02476 011402 -  
[nuneatonstore@axminstertools.com](mailto:nuneatonstore@axminstertools.com)

### **Opening Hours**

|                 |              |
|-----------------|--------------|
| Monday - Friday | 8am - 5pm    |
| Saturday        | 9am - 2.30pm |
| Sunday          | Closed       |

### **Shopping in store**

Here are some of the changes you can expect when you next visit

We're limiting the number of customers we have in our stores at any one time; so you may have to queue outside before we can let you in. Strict social distancing measures, including floor markings by the entrance/exit and the checkout, will help keep everyone at a safe distance.

Hand sanitising stations are available at the entrance and checkout for customers to use.

We're asking our customers to limit their shopping time to half an hour at a time and ask that you use card payments if you can.

Please remember that face coverings are now mandatory in shops.

Please bring a face covering with you and wear it at all times when in store.

**Our in-store demonstrations, Introduction To Woodturning sessions and interactive areas will remain unavailable for the time being.**

## THE MAIL ORDER ABRASIVE SPECIALISTS

Sanding needs as much care as construction and design. As much care needs to be taken in sanding as in the construction of a piece of work. A few minutes poor sanding technique can irreversibly destroy great craftsmanship and many hours work.



### THE ULTIMATE ABRASIVE! RB406 J.FLEX. TRIAL PACK

1M OF CLOTH IN EACH OF THE FOLLOWING GRITS.

P80, P120, P240 AND P320 **£14.75** INC VAT ORDER CODE **12806 RB406**

J.Flex is the best abrasive for every workshop. It's ideal for turning, woodworking and metal working. The distinctive blue abrasive with the yellow backing is the softest and most flexible abrasive we have ever discovered. The ultimate abrasive for all kinds of woodworking, especially sanding in acute areas. This cloth can be twisted and folded without grain dis-adhesion. Rolls are 100mm wide. **ALSO AVAILABLE BY THE METRE.**



### VELCRO-BACKED ROLLS.

TRIAL PACK 1M OF P100, P150, P240 AND P320 PLUS A SAMPLE STRIP OF VELCRO REPLACEMENT WITH PEEL OFF SELF ADHESIVE BACKING. **£14.75** INC VAT ORDER CODE 13159 ALSO AVAILABLE BY THE METRE. PLUS - IT PAYS TO BUY BIG. WITH OUR BULK RATE PRICES YOU'LL SAVE MONEY ON THE GRITS YOU USE MOST.

Cut off any length to suit your own sanding application. Every workshop should have at least two or three grades of this to hand. Especially manufactured by Hermes abrasives for us. Ideal for those shop made sanding devices which you can now make to your own specification. Hook and loop, or velcro attachment does away with the unpleasant task of clamping the paper to the machine, allows rapid changing of the sheet and encourages the use of more grits extending the finish quality and life of the abrasive. Rolls are 115mm wide.

For your free catalogue call 01636 688888 or e-mail [sales@abrasivesplus.com](mailto:sales@abrasivesplus.com) or visit our on-line shop at [www.abrasivesplus.com](http://www.abrasivesplus.com) where all our products are featured and it's free carriage!

**CSM ABRASIVES PLUS UNIT 2 NORTHERN ROAD, NEWARK, NOTTINGHAMSHIRE, NG24 2EH**

## Lathe For Sale

I'm looking to sell my father-in-laws Elu DB180 lathe and wondered if one of your members might be interested, as it's in Kenilworth? He bought the lathe new, probably in the late 1980s but unfortunately became allergic to wood dust very quickly so its had very little use. It comes with a face-plate, two Vari-form chucks, a set of Diamic chisels and a bench (this needs some tlc). I can supply pictures and I think you will be amazed at the wonderful condition it's in. We are looking for £300 for the lot.



Contact Charles Smith on:-

[charlessmith.warks@gmail.com](mailto:charlessmith.warks@gmail.com)

---

oOo

---

## HENRY TAYLOR TOOLS & CHESTNUT FINISHES

Any item from the catalogue can be supplied  
15% discount on Henry Taylor tools and  
10% discount on Chestnut finishes  
for Club members.

**If you are needing further supplies through this lockdown then  
please speak to Eric who will do his best to get them to you.**

**Ring: Eric Taylor on 02476 328831**



Segmented Vase by Pat Flynn.