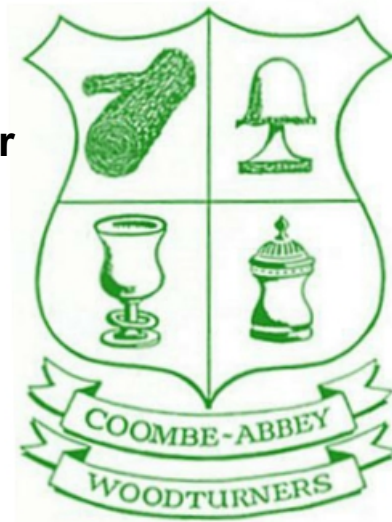


NEWSLETTER

December

2020



This Months Sponsor



Woodworking machinery at its best!

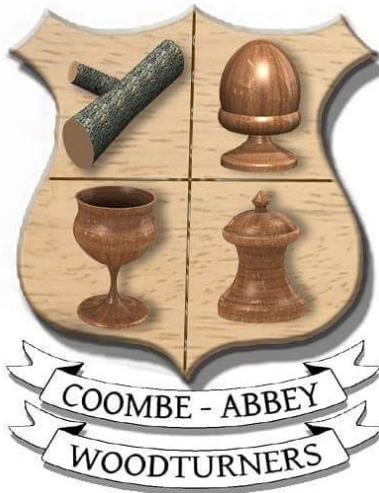
DATA PROTECTION

Your personal details are held on a computer belonging to an officer of the Coombe Abbey Woodturners. Your details are purely for the use of the Club, and are not passed to any third party. If you object to your name, address and telephone number being held on a computer belonging to an officer of the Club, then please write to any member of the committee.

HEALTH & SAFETY NOTICE

Woodturning can be dangerous! Always follow the manufacturers' instructions and safety advice when operating power tools. Never try the techniques shown at our demonstrations or in our Newsletter if you are unsure or the procedure does not feel safe. Always use the guarding and other safety equipment.

The Club takes reasonable care to operate and instruct in a safe manner and strongly recommends all members to follow the Club's Health and Safety rules and the guidance notes that the AWGB issue in their Revolutions magazine from time to time.



Website: <http://www.coombeabbeywoodturnersclub.net>

In This Issue Page

Vice Chairman's Jottings.....	4
Work by Malcolm Waters.....	5
This Months Sponsor.....	6
Work by Gillian Clover.....	8
A Challenge by Phil Stephens	10
Work by Terry Invs.....	14
A Few Words on Membership	20&21
Work by Malcolm Thorpe.....	22
Work by John Morgan.....	24
Work by Paul Fryer.....	29
One Line Philosopher.....	29
Work by Rod Young.....	30
Work by Pat Flynn	31
Work by Alec Steedman.....	32
Work by John Martin-Law.....	35
Wood for Sale.....	39

Advertisers Page

Charnwood.....	7
Crown Hand Tools.....	9
Henry Taylor/Hamlet Tools...	13
Axminster Tools	15
Chestnut Products.....	17
Henry Taylor/Hamlet Tools...	26
Yandles.....	27
CSM Abrasives Plus.....	28
Record Power.....	33
Proops Brothers.....	34
TMS Volvo.....	36
Turners Retreat.....	38

From the Editor

A great response from club members this month has led to a 40 page magazine again. I thank you all very much for that.

The deadline for copy for the January issue is only 24 days away as the printer who produces the hard copies will be on a Christmas leave, so please I implore you all to dig deep and send me more of your wonderful creations.

Whilst on the subject of Christmas I would like to wish you all a Happy and Safe Christmas and hope that we all will be able to welcome our extended families and friends into our homes over the holiday period.

The news of vaccines which is hoped will be available to all in the new year is very encouraging news for our club to begin to think of planning for the future and hopefully we will all be able to meet again and socialise, something we all must have missed terribly since corona-virus came to our shores.

I would like to thank Vice Chairman Alec Steedman for writing the jottings this month as Brian our Chairman has serious family health problems to deal with.

My thoughts and prayers are with Brian and Bridie at this very difficult time.

Graham



Vice Chairman's Jottings

Hi to one and all, Covid 19 hasn't helped us undoing anything in the workshop.

You will have to put up with me doing the Jottings and other matters, as Brian has a family situation which means he won't be accessible for a time.

I've been in touch with Emma at Coombe to find out when it's possible to get back in the workshop and she explained that although Coventry City Council runs Coombe Abbey park it is within Rugby's jurisdiction, and the Prime Minister on a longer lockdown.

Once we can begin again in the workshop there would be two people allowed on the lathes and one person supervising, that person should be a first aider. There are a lot of discussions that needs to take place in the future.

I hope all our members are all well and safe also still turning and keeping their mental health intact.

As the AGM will not be possible in January our members of the committee will stay the same. If you would like to join the committee you could put your name forward.

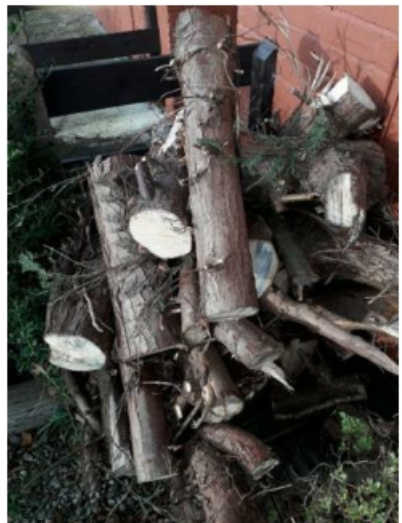
Just a few other things, Colin Grundy received some Elm wood from Rough Close, all donation will go to Coventry Scouting Camp Site.

I have also got some wood that needs a good home, it is Leylandii it can be turned wet. My phone Number is at the front of the newsletter. Keep safe all.

Alec



Alec Steedman



Work by Malcolm Waters

A few weeks ago I helped a friend chainsaw some branches for a garden clearance. As a thank you he gave me a slab of yew, it's 4' long by 4" thick and 8" wide at its widest.

With the help of
our youngest



son, I managed to put it through the bandsaw and obtained a useable slice

With a bit of careful cutting I managed to get some clean wood for a couple of pen blanks and a bottle opener (plus some more)My friend has arthritis in his hands, so I thought the shape of the bottle opener might help him grip. Both items finished with Chestnut Sanding Sealer and Microcrystalline Wax. ■

This Months Newsletter Sponsor.

I would like to thank Alex Cook of Charnwood for agreeing once again to sponsor our Newsletter. I have quite a few items of machinery supplied by Charnwood and I am very happy with the service I received from them and am more than happy with the machinery. Charnwood are now stocking Chestnut finishes and selected Robert Sorby tools and equipment along with a fine selection of timbers including exotics for turning, so a visit would be well worthwhile.

I would urge club members to support our sponsor by buying their excellent Lathes, Chucks and other equipment, but please don't forget to mention that you saw their advert in the Coombe Abbey Woodturners Newsletter.

Charnwood - A Company Profile

Charnwood is a family run business, established in 1977 to offer top quality woodworking machinery to enthusiasts and trade users.

Since that time many changes have taken place in both the products we sell, due to technological advances, design innovations and even European safety regulations, and changes in the market place itself thanks to fast and efficient delivery services, and most recently online shopping.

Our philosophy however remains unchanged and all products which carry the 'Charnwood' brand represent the highest manufacturing standards and of course excellent value for money all backed up by a 1 year guarantee.

The range of woodtuning lathes, chisels and chucks is now bigger than ever, with future models already under development. Over the last 5 years Woodturning has been the fastest growing sector of the companies sales.

Our products are available to see at leading woodworking machinery distributors all around the country. Contact us or visit our website to locate your local stockist.

Due to space constraints our stockists cannot show our full range and for larger or more specialist machinery you are welcome to view them in our own showroom in Leicester.

Showroom opening times; Monday to Friday 9am to 5pm

*New
Product*

charnwood

*New
Product*

Woodworking machinery at its best!

B250 10" Premium Bandsaw



**New Premium Grade 10"
Woodworking Bandsaw ideal for
woodturners**

- Huge 6" Cutting Depth Capacity -
- 10" Cutting Width (Throat)
- Supplied with High Quality British Made Blade
- Precision Ground Cast Iron Work Table
- Quick Action Lock On Rip Fence -
- Crosscutting Mitre Guide Included
- Quiet Induction Motor
- Mains Powered LED work Light -
- Integral Dust Collection Tray
- Includes Floorstand
- Primarily used for Woodworking

£299

Also available

B300 12" Premium Bandsaw £459

B350 14" Premium Bandsaw £579

Now in stock & on display in our
Leicester Showroom

For our full range of Bandsaws
call 01530 516926 for your FREE catalogue
or visit our website www.charnwood.net or showroom at
Cedar Court, Walker Road, Bardon Hill, Leicester, LE67 1TU

Work by Gillian Clover

Hi Graham

Well, another month has almost gone by...we may be in lock-down but time for us is flying past.

Please see the attached photo of a Nutcracker whom I have named Nobby. He doesn't have any nuts to crack as he doesn't function in that area.



Anyway, once again it is a mixed media project that I have just completed. I have made Nobby for the garden, so I hope that I have weather-proofed him sufficiently. The materials I have used are turned wood, Halford's vehicle aerosol, some water colour, Air-clay and miscellaneous bits and bobs. He stands about 3' high and is quite heavy.

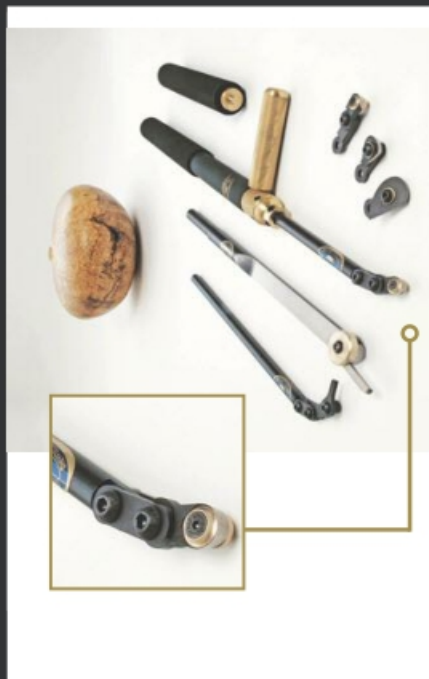


INTRODUCING THE NEW REVOLUTION

The "revolution" is a completely new hollowing system from the world leaders in fine turning tools. From its beautifully weighted handle to its cryogenically treated cutting tips the "revolution" is designed to be the finest hollowing tool on the market.

The modular articulated design allows the woodturner the freedom and flexibility to configure the tool for any situation. From straight vases to heavily undercut hollow forms the "revolution" has it covered.

At the heart of the "revolution" is the new fully depth adjustable "super ring" the revolutionary design of the "super ring" ensures clean efficient wood removal at all times with 5 different cutting tips and modular articulation design the revolution is a must have tool for all woodturners.



- Supplied with 5 different cutting tips for unrivalled flexibility.
- Clever modular design allows for many different configurations.
- All collars and collets beautifully machined from solid "marine grade" brass billet.
- High performance cryogenically treated cutting tips for vastly improved wear resistance.
- New adjustable "Super ring" allows ultra efficient wood removal without clogging.
- Slim line articulated tip design for unrestricted access to those hard to reach cuts.
- Expandable.
- Hand made in Sheffield, England.



Tel. 0114 261 2300

Fax. 0114 261 2305

Web. www.crownhandtools.ltd.uk

Email. info@crownhandtools.ltd.uk

The Challenge of Combining Acrylic and Wooden Segments into a Bowl

By
Philip Stephens



This project started out as a challenge to combine the use of acrylic into a wooden segmented bowl. When you say it like that it sounds simple doesn't it? Just work-

out the number and size of the segment rings and PVA glue it all together. The problem is that acrylic and PVA glue don't mix together and will not develop the tight bond which would be needed if the thickness of the segment wall rings is to be reduced to capture light through the acrylic segment windows. The other problem is, in order to give the acrylic windows a mirror finish you will need to sand them down to about 12000 grit. Normally you only need to sand down on a wooden bowl to roughly 400 grit.



In the past I have experimented with combining acrylic and wood but this would be the first time I have used large pieces of acrylic. I chose as the feature ring theme the Greek urn pattern which encapsulated the acrylic on all sides with wood and could be easily glued together making certain that the grain is always traveling in the same direction. This has the effect of blending the acrylic into the ring segment. The only remaining question was what do I use to glue the parts together? I looked at superglue, the problem with the bonding agent called cyanoacrylate is it bonds in seconds and leaves a crystal-like residue which, when highly polished, gives a very thin white line between the wood and acrylic surfaces. The other glue I tried, and which was more successful, was epoxy adhesive.

Epoxy is an epoxide chemical resin that when mixed with a hardening or curing agent changes the epoxide chemical into a very strong adhesive. In this case the epoxy adhesive is clear and blends in with the surface of the acrylic and, if it's left to set under clamp pressure, is almost impossible to see. The resin also allows you to adjust and align the acrylic and wood and without leaving your fingers glued to the surface or the bench. Once the acrylic has been encapsulated in wood, I could go back to using PVA glue and clamps to complete the rings and finally glue all the rings together to complete the bowl structure.

All that remains is to use a bowl gouge to turn out the inside of the bowl so that you have a smooth curve to the inside of the bowl. As most of you have experienced when turning acrylic pens, the material has a habit of chipping if the tool is blunt. Also, using a curved scraper adds an additional problem to the acrylic sections. So sharp tools and thin



When the inside is complete and sanded to about 400 grit then you can start on the outside of the bowl. The trick here is to reduce the thickness of the walls evenly but still keep the shape of the finished bowl. Also, I have to consider that if I made the walls too thin and the bowl warped or shrunk, it could break the joints to the acrylic windows which may not



give or move with the wood.

The outside of the bowl was sanded down to 400 grit using a hand drill with a disk sander attachment. When completed I used Micro Mesh Pen sanding pads to take the finish to 12000 grit over the entire bowl. At each level I inspected the acrylic sections to confirm there were no chips in the finished surface.



The final finish was covered with sanding sealer and 5 coats of melamine lacquer spread onto the surface and allowed to dry for 24 hours each time. I used a set of chuck remounting jaws to hold the piece to remove the chucking foot and complete the work. A mesh was used to secure the work and to prevent movement as the foot was removed. ■

Little Sister

Big on Performance

Little Sister is a mini hollowing tool based upon the highly successful Brother System 2 range

Talk with your Hamlet
Stockist today

Compact fixing screw
Hollow through 13mm
openings with ease!

Tapered Stem
for maximum rigidity

Proudly
Made in the UK

DVD
VIDEO
Free DVD
included

3 configurations available



hamlet
CRAFT TOOLS

sales@hamletcrafttools.com
www.hamletcrafttools.com
+44(0)1142321338

Ask about the interchangeable scraper - Ref HS187B

A makeup box

by

Terry Ivins

A couple of months ago I was asked if I could make a makeup box for my granddaughter, she is only seven but has had a hard life from a medical aspect. She loves colour, particularly Pink and anything in today's parlance Bling! or should it be, with a bit of a sparkle.

So off I went and adhering to my mentor Mr D Rooney I went straight to the scrap box and found just by the side of it a log of size enough to make the proposed box, or so I thought, a quick turn to round clearly showed that my



near 300 mm diameter round was not as sound as it looked, always the way, don't you just love it when that happens. So with mentors advise ringing in my ears "Turn it down! "The blank was reduced down to 250.mm and duly hollowed out as is shown here.

At some point and as is usual with no clear reasoning, I decided that I would try to fit a tray of some sort to give a little storage space within the box, foolish boy, keep it simple someone once told me.

Silly thing to do, so now I had to make a Tray and one of the issues is that the little lady has is she cannot pick up or grasp small things very well, design issue coming up

So pictured right is the tray with the handle that was made.





Evolution is not just a theory

AXMINSTER EVOLUTION SK114 CHUCK PACKAGE

Undeniably the best chuck on the market and at the top of its game, the Evolution SK114 Chuck is designed for the true professional and those who aspire to turn like one.

- Made from stainless steel to resist corrosion and machined to a tight tolerance for a perfect fit of both jaws and lathe spindle.
- The body is machined from one piece of steel to ensure perfect concentricity.
- Compact design keeps the chuck as close to the spindle bearings as possible, ensuring superb resistance to vibration.
- All chucks include dovetail C jaws, matching faceplate ring, screw chuck and chuck key



The Axminster 5 year guarantee applies to all Axminster precision chucks. It's probably one of the most comprehensive guarantees ever.

- Cover includes use in a professional environment
- No registration necessary – just keep your proof of purchase
- Terms and conditions apply – please see axminstertools.com

NEW PACKAGE



Thread sizes available:

- T04M 1" x 8tpi
- T38 M33 x 3.5mm
- T23 1 1/4" x 8tpi
- T02RL 1 1/2" x 6tpi
- T38R M33 x 3.5mm

AXMINSTER
Tools & Machinery

To see the quality of these products, visit one of our stores, search axminstertools.com or call **0800 371822**.

For the complete Axminster experience and to keep up with Skill Centre courses, events, news and much more, browse our website or follow us on social media.

Prices may be subject to change without notice.



Rated 'Excellent' on  Trustpilot

Showing at the front of this picture “ If the picture is printed in colour” is the Gold studs that I inserted to give it a bit of Bling !.

OK OK they are worm holes with a bit of Framing wax. I am fairly confident that the wood worm gave up after 30 seconds in the Microwave and a quick spin on the lathe at 1200 RPM. In the top of the handle is an inlay of resin with opal and yet more Sparkle.



As can be seen from the first picture of the body, one of the things I did was I felt it may help would be when accessing the box was to cut a recess into the body of the box for a simpler way of taking off and replacing the lid.

As with so many things I forgot to take a picture of the lid while I was making it as it was at this stage when I went into full silly mode and decided to do several things that I had never done before. As my daughters say

OLD AGE! DAD

The first was to add a bit of colour, A bit of colour, Joke !

As mentioned My son told me “She likes PINK” then a few days later! he just added “and Glitter, Oh and Butterflies!”

So after all of that, I did this



US Stockist
Enquiries Welcome.
Tel/Fax 888-631-8311

Lacquers

•
Polishes

•
Waxes

•
Polish Enhancers

•
Wood Treatments

•
Polishing Brushes

•
Abrasives

•
Stains

•
Thinners

•
Applicators

•
Superglues

•
Buffing Systems

•
Acrylic Blanks

•
...and much more



CHESTNUT

P A O D U C T S

first for finishes



Used by woodturners of all abilities throughout the UK and the world, the Chestnut Products range of top quality finishes gives outstanding results every time; whatever you are making and whatever your preferred finishing system there is bound to be something in our range to meet your needs.

*See your local stockist for more information
or for a catalogue/price list contact us at:*

Chestnut Products

**PO Box 260, Stowmarket,
IP14 9BX**

Tel: 01473 890 118 Fax: 01473 206 522

**www.chestnutproducts.co.uk
mailroom@chestnutproducts.co.uk**

Stockist enquiries welcome

I suppose the thing that struck me after that was the underside of the lid and the box itself was a little, got to be said **Bland!**

However it did have a couple of things going for it! A nice finish and a pair of full character **KNOTS**.

Again one of the things that is an unfortunate problem for this little lady is the simple ability to associate Letters and Words.



So I put her Name on the underside of the Lid.

I am offering a Prize to any of the members who can correctly identify my granddaughters Name.

I did also add a bit of Bling to the body



First Prize :- One VERY LARGE box of High quality Shavings



A few more pics of some of my playing with colours. Both are chestnut the large vase is Iridescent and the small pot is Metallic with pieces of acrylic pen blanks. ■



A Few Words on Memberships
By
Janine Brindley (Club Treasurer)



Please read the December copy of Revolutions and (if you receive it) the electronic bulletin sent out by AWGB. In it they explain how they support clubs generally and what they are doing to support clubs through the Covid-19 pandemic.

In summary by paying our AWGB membership fees we are helping to support ourselves and the smaller clubs. We benefit directly by having reduced insurance costs for the workshop and, when we do resume, reduced insurance for demonstrations and outside events. We apply for a grant to help cover cost of demonstrators throughout the year – this is still available for 2021 and we will apply for it again. There is also the possibility of a Covid-19 support grant arranged specifically aimed at helping clubs who are in imminent danger of closing.

As a club we continue to offer support to our members through the newsletter edited by Graham Ball, telephone calls between friends who are acquainted through the club, our website and, for a few, meeting at Coombe Abbey café on Wednesday and Friday mornings. Please continue to be a member, now more than ever giving us all that extra opportunity of camaraderie and shared experiences that our club offers.

We look forward to seeing all our members in the future at the club, at demonstrations or at outside events when any and all of those things are again part of our lives. In the meantime, keep turning and sharing your work through pictures or write ups. Keep in touch with club friends as often as you can. Remain positive and above all stay safe.

As we are all struggling to think of appropriate gifts for each other you could request your membership to Coombe Abbey Woodturners as a gift for Christmas from a friend or family member. If you decide to do this contact Janine for a speciality designed gift card to enclose the memberships in.

Memberships.

PLEASE PAY COOMBE ABBEY WOODTURNERS

Unfortunately we are still not able to meet at the club so for memberships to go ahead this year we will be either completing by post or bank transfer.

Membership costs are outlined below – any questions please get in touch with Janine.

Individual member AWGB £18.00+£8.00= £26.00

Family AWGB £28 + £8.00 per person

2 people AWGB £28.00 + £16.00= £44.00

3 people AWGB £28.00 + £24.00 = £52.00

Cheques made out to - Coombe Abbey Woodturners

For all membership renewals please do one of the following:

1. BY POST.

PLEASE enclose a self-addressed stamped envelope

Mail your membership renewal cheque made out to Coombe Abbey Woodturners to

Janine Brindley (Treasurer) 19, Merrifield Gardens Burbage, Leics. LE10 2TE.

and as soon as the new membership cards arrive, I will post your new membership card out to you.

2. DIRECT to BANK

The costs are as outlined above plus £1.00 to cover postage.

Anyone wishing to pay directly into the bank please contact Janine Directly by TEXT (07931417378) message or EMAIL (treasurercawt@yahoo.com).

PLEASE put your name and address in the message

I will reply giving you sort code and bank account number confirming your details.

3. Anyone who needs to **update their details** please TEXT or EMAIL me with your name and change of details.
4. If you know of anyone wanting to join as a new member please ask them to contact Janine by TEXT or EMAIL a membership form will be sent out.

Janine will be sending renewals and new member details to the AWGB no later than the end of January 2021.

Work by Malcolm Thorpe

Earlier in the year I picked up some timber from a tree feller clearing some woodland at the edge of the road. Mainly oak



and an ash crotch piece. I chain sawed the ash in half lengthwise to get a pair of blanks to produce platters which I could practice colouring with. The halves were trimmed and rough



turned to about an inch thick while wet. The blank was put aside in a summer. I find ash will

was ready to turn in Oc-

cool place over the dry easily and the blank tober. The rough turned blank was placed against chuck and held in place with the tail-



stock and the chucking point re-turned. The underside of the platter was finish turned and sealed (apart from the chucking point). The front face of the platter



was finish turned and sanded. The centre was kept shallow to keep the figuring. It was then coloured using spirit stains applied with a brush then blended with meths with a tissue and to remove the excess.



The stain was allowed to dry and then sealed with acrylic sealer. The chucking point was removed and then coated in gloss lacquer. I choose sunset colours, maybe not to every body's taste but I was pleased with the result.



I had less success with a piece of oak. A 12 inch diameter log was sliced up into three, trimmed and rough turned (wet). I coated the blanks in 'end seal', but the pieces with wild grain cracked quite badly. I did try and seal the cracks with superglue, but the wild grain I was trying to save made it very difficult. One piece I turned semi wet in the hope it may reduce the stresses. It partially worked with the help of some eboxy and sawdust, but it is now what one would call a bowl of character. The other two bowls I kept until



October to turn and I am quite happy with the results.



I had some wood for the fire from the same source and found a few pieces that deserved better so I made a few apples and pears. ■



Work by John Morgan

Hi Graham hope you are keeping safe.
Attached are pictures of my finished open
segment shade for my oil lamp.
It stands about 12 inches high and 4 inches
at it widest point. 48 segments per ring.



Wood used. Maple, Cherry,
Walnut.

3 weeks work.

In-between glue ups I made a
couple of pen racks, my wife
Sara wanted one for work

and I needed one.

The pair below I made for a Neigh-
bour.

The pen below is mine.

The pens kits are top end 24 carat
gold, I love using acrylic blanks
the shine stays forever not like
wood fades after a short while.



The lamp lit up looking from outside the house





Left: Wine glass with turned acrylic stem and Yew base.



Right: Small box with clasp



Below: Box made from Epoxy Resin and rough cut pieces of wood. The shape resembles a Russian Doll



hamlet
CRAFT TOOLS

Sheffield England

Now
available in the
Glenn Lucas range of
products

M42 Stay Sharp HSS

M42 Turning Tools

Stay Sharper - Longer

Now available: 1/4"; 3/8"; 1/2" Bowl Gouges; 3/8"; 1/2" Spindle Gouges
with red-ferruled ash handles, or unhandled, at prices you can afford

Live The Dream - Talk to your Hamlet or Henry Taylor Stockist - TODAY!



Introducing Yandles essentials!

New for 2020, introducing Yandles essentials! essentials is a core range of quality Woodworking products, all essentials branded products have been sourced with the motto 'If you wouldn't use them, they don't go in the range!'.

Whilst the essentials brand is aimed at being a cost effective, competitive range of products, the quality must remain high!

Purchase with the reassurance that the products have been sourced, tried & tested by the Yandles team, whether your purchasing superglue or a new set of turning tools you can trust the quality of Yandles essentials!

Our expanding NEW range includes:

- Abrasives (Jflex rolls, discs, bowl sanders & sanding belts)
- Adhesives (Superglues, PVA D3, PUR, glue sticks, tapes + a **NEW edition Powdered Resin**)
- Extraction accessories (Range of hose sizes including a power tool reducing kit)
- Finishing / Preparation & repair (Finishing tissue roll, Silicon spray lubricant)
- Measuring / marking (Steel Rules in Metric & Imperial & a range of sizes)
- British Made PPE in association with JSP! (Sonis 1 80-107DB Ear Defenders & 107-112DB)
- AND THE NEWEST ADDITION TO THE BRAND – British Made Woodturning Tools!

Available from Yandles.co.uk or call us on 01935 822 207!



THE MAIL ORDER ABRASIVE SPECIALISTS

Sanding needs as much care as construction and design. As much care needs to be taken in sanding as in the construction of a piece of work. A few minutes poor sanding technique can irreversibly destroy great craftsmanship and many hours work.



THE ULTIMATE ABRASIVE! RB406 J.FLEX. TRIAL PACK

1M OF CLOTH IN EACH OF THE FOLLOWING GRITS.

P80, P120, P240 AND P320 **£14.75** INC VAT ORDER CODE **12806 RB406**

J.Flex is the best abrasive for every workshop. It's ideal for turning, woodworking and metal working. The distinctive blue abrasive with the yellow backing is the softest and most flexible abrasive we have ever discovered. The ultimate abrasive for all kinds of woodwork, especially sanding in acute areas. This cloth can be twisted and folded without grain dis-adhesion. Rolls are 100mm wide. **ALSO AVAILABLE BY THE METRE.**



VELCRO-BACKED ROLLS.

TRIAL PACK 1M OF P100, P150, P240 AND P320 PLUS A SAMPLE STRIP OF VELCRO REPLACEMENT WITH PEEL OFF SELF ADHESIVE BACKING. **£14.75** INC VAT ORDER CODE 13159 ALSO AVAILABLE BY THE METRE. PLUS - IT PAYS TO BUY BIG.

WITH OUR BULK RATE PRICES YOU'LL SAVE MONEY ON THE GRITS YOU USE MOST.

Cut off any length to suit your own sanding application. Every workshop should have at least two or three grades of this to hand. Especially manufactured by Hermes abrasives for us. Ideal for those shop made sanding devices which you can now make to your own specification. Hook and loop, or velcro attachment does away with the unpleasant task of clamping the paper to the machine, allows rapid changing of the sheet and encourages the use of more grits extending the finish quality and life of the abrasive. Rolls are 115mm wide.

For your free catalogue call 01636 688888 or e-mail sales@abrasivesplus.com or visit our on-line shop at www.abrasivesplus.com where all our products are featured and it's free carriage!

CSM ABRASIVES PLUS UNIT 2 NORTHERN ROAD, NEWARK, NOTTINGHAMSHIRE, NG24 2EH

Work by Paul Fryer

I have now put the caravan to bed and picked up the chisels. Here is last week's efforts a piece of elm with a natural edge.



oOo

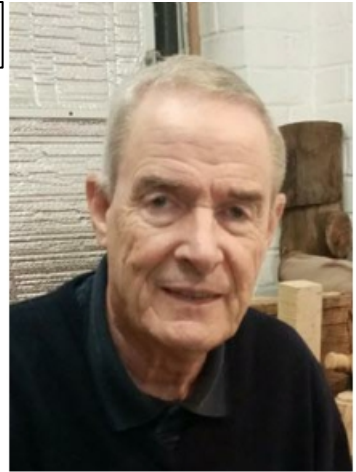
One Line Philosopher:

Use others ideas as the stimulus to your personal thought and not as a replacement.

Work by Rod Young

Hi Graham,

I am just a year into wood turning and missing my contact with the Thursday lads from whom I have been learning almost everything I know, my thanks to them for their patience.



You have been asking for pictures so thought I would send a few. The snowmen are for children within my family and the Drummer for a friend

who is quite a famous drummer in music circles.

The lidded box is my first effort at this item after watching a couple of “you tube” video’s, this was made out of American Black Walnut.

I hope all our members are keeping well and I hope to catch up with some of you soon.



Work by Pat Flynn

Just a few oddments I have created recently. The most challenging was the open-segmented piece as the openings were quite large. I am now hoping to do some more of this type, now that this piece did not shatter.



Open Segmented piece in Walnut/Sycamore



Lidded Box in Yew



Open Segmented piece with red paper inserted to highlight size of open spaces



Cedar Lidded Vase with feature



Large Yew Vase



Mulberry Bud Vase



Spalted Sycamore Bud Vase with Feature Ring

Work by Alec Steedman

I may not be wood turning at the moment but I'm still keeping my hand in trying to empty my shed. I am unable to do it as some of the things are too bulky for me to lift and as other lockdown is around it is difficult to get my older grandsons to help.

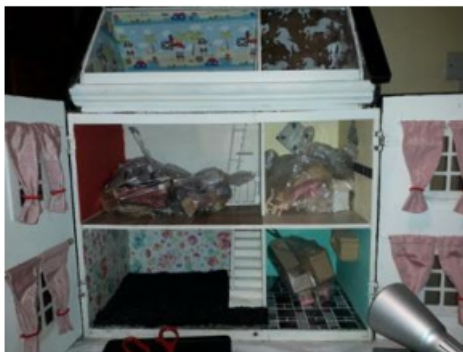
If you have emptied a shed you will understand what I mean and how much you have saved through the years.

Anyway my lovely Wife Jill and I have been refurbishing a dolls house which I made some years ago for my daughters 21st. So have done it up for our Grand-daughter for her birthday.

This is what it looks like now.

I have also been keeping my hand in with photography and art on a picture I have named it chilling. It's a leopard on a tree branch in the jungle.

The next one is called "River Side", a nature scene.



Introducing the Brand New Range of Woodturning Chucks and Jaws

We are extremely proud to introduce the brand new range of Record Power woodturning chucks and jaws. This exclusive new range has been developed using Record Power's extensive experience and knowledge of woodturning in conjunction with a group of highly experienced professional and hobby woodturners, to bring you the ultimate in quality, versatility and value.



Precision Engineered Gears

Super Geared True-Lock™ technology ensures high levels of accuracy to provide smooth and solid operation.



Jaw Fixing System

The SC3 and SC4 feature a jaw fixing which will not only fit the Record Power series of Jaws but is also fully compatible with Nova and Robert Sorby brand jaws.



Heavy Duty Jaw Slides

The improved and enlarged jaw slides give unsurpassed holding power and load bearing ability. They are made from high tensile steel, reinforced with nickel and copper and heat-treated to ensure superior strength.



Sealed Backing Plate with Full Indexing

The SC4 features a strong backing plate to protect the gear mechanism from dust and 72-point indexing around the full circumference.



Brand New Exclusive Jaw Range
Fully compatible with Nova brand chucks



See online for full details

SC3 Geared Scroll Chuck Package



SC4 Professional Geared Scroll Chuck Package



RECORD POWER
ESTABLISHED 1909®

www.recordpower.co.uk Tel: 01246 571 020

Over
100
years
Experience • Knowledge
Support • Expertise

RECORD POWER
STARTER KIT
CORONET
BUSINESS

Incorporating some of the most outstanding woodturning tools and equipment ever made, the Record Power Starter Kit is a must-have for any woodturner. It includes a full range of tools and equipment, with a comprehensive instruction manual and a 10-year warranty.

PROOPS BROTHERS

ENGLAND • EST 1946

.COM

ALL PRICES INCLUDE POST AND PACKING

1000'S OF OTHER PRODUCTS

INSIDE, OUTSIDE PLASTIC CALLIPERS



Measurements

0 - 200mm M7176 **£4.60**

0 - 350mm W3509 **£6.80**

OILSTONE & BOX



£5.50

Fine and
course sides
W3330

CABINET SCRAPERS



Set of 4
W8014

£11

HARDWOOD SQUARES



75mm Hardwood & brass tri-square

W8000 **£3.60**

CHUCKS

Drill Chuck Set of 4
6mm 1MT,
10mm, 13mm & 16mm
with 2MT Arbor
Product code M7175
Also available individually



£24

20MM FINGER SANDER

Spring Loaded Mini Precision Sander,
20mm & 3 spare sanding belts .
UK Made Product code W3202
10mm and 40mm widths also available

£4



Hardwood sliding bezel

W8002 **£3.60**

MAGNIFYING LAMP LIGHT 5 DIOPTER. DAYLIGHT BULB

Product code V5200

£36



Set of 4 Chip Knives W3249 **£23**

Proops Brothers Ltd 34 Saddington Rd. Fleckney, Leicestershire, LE8 8AW
TEL. 0116 2403400 WWW.PROOPSBROTHERS.COM EBAY USER NAME: SPOORP

Work by John Martin-Law

Hello Graham,
I have attached a few of my recent creations
that may be of interest for the Club Magazine.



The first are for our three youngest Granddaughters who live in different parts of the country and the dibbers are for our local garden centre who place them in Christmas packs of seeds, pots and gloves etc.



Let TMS look after your Volvo



SALES // SERVICE PARTS // ACCESSORIES

With over 300 years combined experience of working with Volvo, nobody knows your Volvo like **TMS**.

With award-winning levels of customer service and state-of-the-art facilities at Trinity Marina, what ever your Volvo requirements, the **TMS** team can deliver.

**Call in and
see us soon!**



QUALITY • CARE • PERSONAL SERVICE



TMS VOLVO HINCKLEY

Trinity Marina, Coventry Rd,
Hinckley, Leicestershire LE10 0NF
TELEPHONE: 01455 632478

www.tmsmotorgroup.co.uk/volvo



3-Piece Mini Carbide Turning Tool Set

The Mini Carbide Turning Tool Set is ideal for turning small projects, such as boxes and goblets, and is also extremely useful for turning pens in wood and acrylics. The set consists of three tools, each with a rubber handle for extra grip and comfort to reduce fatigue. The carbide cutters will stay sharp for a long time and when required, they can be rotated to give a fresh edge or can simply be replaced. Each tool features its own cutting profile; round, square and diamond-shaped, perfect for roughing out, finishing and fine detail work.



"This set is really good and exceeds my expectations. A good selection of tools presented in a robust carry/ storage case. Really good value for money."

Phill, Turners Retreat customer

Price: £74.95 inc. vat



Code: CTT1

Prices may be subject to change without notification.

Scan the code to watch the tools in action.



www.turners-retreat.co.uk
01302 744344 | eshop@turners-retreat.co.uk
2 Faraday Close, Harworth, Nottinghamshire, DN11 8RU



Lime Wood

“Coventry Scouts Campsite have donated a quantity of Lime wood to Coombe Abbey Woodturners. It is green wood that has been cut into rough blanks. It is available on a first come, first served basis for a small donation to Coventry Scouts and can be collected from the workshop at Coombe. Please arrange with a Committee member for access.”



oOo

**If there is anything you would like to be brought to the attention of fellow members please get in touch with the Editor.
Contact details on page 2.**

oOo

HENRY TAYLOR TOOLS & CHESTNUT FINISHES

Any item from the catalogue can be supplied
15% discount on Henry Taylor tools and
10% discount on Chestnut finishes
for Club members.

If you are needing further supplies through this lockdown then please speak to Eric who will do his best to get them to you.

Ring: Eric Taylor on 02476 328831



**Coombe Abbey Woodturners
Committee**

Would like to take this opportunity to wish all

Members

Sponsors

&

Friends in Other Clubs

**A Very Happy Christmas
And a Healthy, Peaceful & Safe**

New Year

