

NEWSLETTER

April

2021



This Months Sponsor



CHESTNUT

P A O D U C T S

DATA PROTECTION

Your personal details are held on a computer belonging to an officer of the Coombe Abbey Woodturners. Your details are purely for the use of the Club, and are not passed to any third party. If you object to your name, address and telephone number being held on a computer belonging to an officer of the Club, then please write to any member of the committee.

HEALTH & SAFETY NOTICE

Woodturning can be dangerous! Always follow the manufacturers' instructions and safety advice when operating power tools. Never try the techniques shown at our demonstrations or in our Newsletter if you are unsure or the procedure does not feel safe. Always use the guarding and other safety equipment.

The Club takes reasonable care to operate and instruct in a safe manner and strongly recommends all members to follow the Club's Health and Safety rules and the guidance notes that the AWGB issue in their Revolutions magazine from time to time.



Website: <http://www.coombeabbeywoodturnersclub.net>

In This Issue	Page
Vice Chairman's Jottings.....	4
A Box by Don Kildin.....	5
One Line Philosopher.....	5
This Months Sponsor.....	6
Work by Paul Fryer.....	9
Boxes by Bob Smith.....	10
Boxes by Pete Wright.....	11
Boxes by Gillian Clover.....	13
Boxes by Giles Headley.....	15
A Box by Malcolm Waters...	16
O/mental Turning on St/Lathe	17
Boxes by Bill Randle.....	18
Renew Your Membership.....	20
Boxes by Tony Townsend....	22
Boxes/work by Phil Stephens.	27
Work by Robert Smith.....	28
Boxes by Terry Ivins.....	30
A Box by Colin Grundy.....	32
An Invitation.....	33
Pictures by Tony Townsend..	36
Child's Toy by Terry Ivins..	40

Advertisers	Page
Chestnut Products.....	7
Henry Taylor/Hamlet Tools....	8
Yandles.....	12
CSM Abrasives Plus.....	14
Record Power.....	25
Proops Brothers.....	26
TMS Volvo.....	29
Turners Retreat.....	34
Charnwood.....	35
Crown Hand Tools.....	37
Henry Taylor/Hamlet Tools...	38
Axminster Tools	39

From the Editor



As you will be able to see from the contents list adjacent to this column there was an excellent response to my request for pictures of your lidded boxes and I thank you all for this. If you are one who did not contribute then please send me your contribution and I will include it in the next newsletter.

For the **May issue** I suggest you send me any pictures of **“Off Centre Turning”** you have done please. I know this is not such a popular topic as lidded boxes but I dare bet that I will be surprised by the amount of members who have attempted it.

We are all looking forward to be able to attend woodturning meetings once more and this is looking more and more a possibility due to the Vaccine rollout and the steady lifting of restrictions. I am currently awaiting the call for my second vaccine jab which is due within the next week. They say that all adults will be vaccinated by the end of July so that is another milestone to look forward to.

There are still a large number of members who have not renewed their subscriptions so can I refer you to page 20 of this magazine where you will find the various ways you can pay to renew.

Thanks to all.

Graham

Vice Chairman's Jottings

Hi all,
Well thing's are really beginning to look brighter.

The vaccine roll out is helping thing's along nicely.

Still not doing any woodturning myself, in the process of emptying my old shed to make way for a new one.

I would like to

take this opportunity to thank Don Robins for his donation of wood to help my sons girlfriend with her little business, I have enclosed some pictures of her work.

Not a lot going on Still, but hopefully come April we shall be able to meet up for coffee at least. Stay safe all.



Alec Steedman



A Box by Don Kildin



oOo

HENRY TAYLOR TOOLS & CHESTNUT FINISHES

Any item from the catalogue can be supplied
15% discount on Henry Taylor tools and
10% discount on Chestnut finishes
for Club members.

**If you are needing further supplies through this lockdown then
please speak to Eric who will do his best to get them to you.**

Ring: Eric Taylor on 02476 328831

oOo

One Line Philosopher:

Lifetime goals should be grand and glorious while daily goals should be simple and doable.

This Months Newsletter Sponsor.

Terry Smart of “**Chestnut Products**” has very kindly once again agreed to sponsor this months Newsletter. Chestnut Products became the first company to sponsor the Coombe Abbey Woodturners Newsletter in March 2006 and this has helped the club enormously. A large proportion of our club membership use the Chestnut wood finishing products myself included. We are very fortunate to have a Chestnut agent as one of our club members (Eric Taylor) making it very easy to acquire these excellent products. Please support our sponsor by purchasing from them, and don't forget to tell them that you saw their advert in “The Coombe Abbey Woodturners Newsletter”.

Editor

Chestnut Products A Company Profile

Formed in the last decade of the twentieth Century, Chestnut Products have quickly become a well known and trusted supplier of quality wood finishes with a special emphasis on products for woodturners. Used by professional woodworkers and enthusiasts alike Chestnut Products' finishes are often to be seen being used on their own stand and by independent demonstrators. The range covers most finishing requirements, from staining and waxing to sealing and polishing.

CHESTNUT FINISHES

Any item from the catalogue can be supplied
10% discount on Chestnut finishes
for Club members

Ring: Eric Taylor on 02476 328831

See
US Stockist
Enquiries Welcome.
Tel/Fax 888-631-8311

Lacquers

•
Polishes

•
Waxes

•
Polish Enhancers

•
Wood Treatments

•
Polishing Brushes

•
Abrasives

•
Stains

•
Thinners

•
Applicators

•
Superglues

•
Buffing Systems

•
Acrylic Blanks

•
...and much more



CHESTNUT

P A D D U C T S

first for finishes



Used by woodturners of all abilities throughout the UK and the world, the Chestnut Products range of top quality finishes gives outstanding results every time; whatever you are making and whatever your preferred finishing system there is bound to be something in our range to meet your needs.

*See your local stockist for more information
or for a catalogue/price list contact us at:*

Chestnut Products

**PO Box 260, Stowmarket,
IP14 9BX**

Tel: 01473 890 118 Fax: 01473 206 522

**www.chestnutproducts.co.uk
mailroom@chestnutproducts.co.uk**

Stockist enquiries welcome

hamlet
CRAFT TOOLS

Sheffield England

Now
available in the
Glenn Lucas range of
products

M42 Stay Sharp HSS

M42 Turning Tools

Stay Sharper - Longer

Now available: 1/4"; 3/8"; 1/2" Bowl Gouges; 3/8"; 1/2" Spindle Gouges
with red-ferruled ash handles, or unhandled, at prices you can afford

Live The Dream - Talk to your Hamlet or Henry Taylor Stockist - TODAY!

Work by Paul Fryer

Hi Graham
Hope all so sweet.

Here are some images of 2 square ash blanks
8"x8"

Having a play with some colour.

Thanks for pictures in last issue funny looks
like a few of are members of team tiny

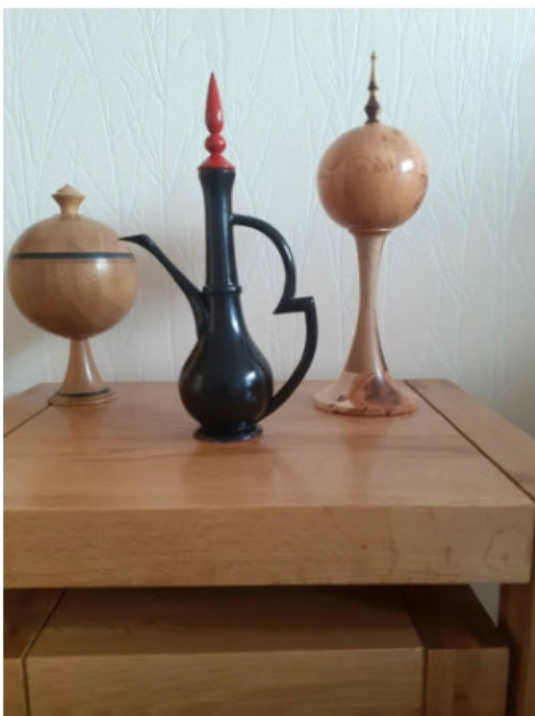
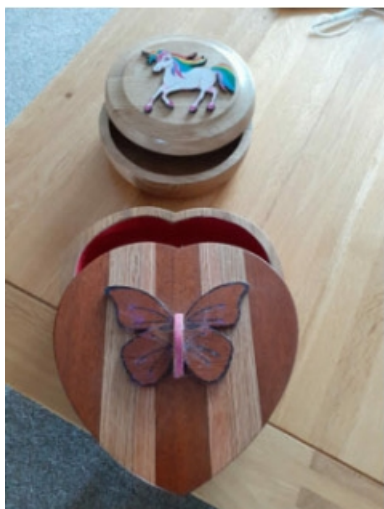
Cheers

Paul Fryer



Boxes by Bob Smith.

A few different shape boxes heart shape, scroll saw, unicorn box turned both sent to Australia for grand daughters and other two sphere boxes
All best Bob Smith



Boxes by Peter Wright

Hi Graham

As requested I have dug out some old and new lidded boxes. From left to right the woods used are:

Sapele with an Indian Blackwood finial, Spalted Maple (a piece of wood that was rescued from a friends garden in Willoughby Waterleys), Laburnum with the finial from the offcut of the Sapele, Eucalyptus (this piece was given to me by the park keeper on the Brockenhurst Estate and the last three were all made out of Yew, sizes as required by the wife for display.



I hope yourself and all club members are keeping well and I look forward to the time we can all meet up again.

Cheers

Pete Wright



NEW

PART OF OUR GROWING RANGE OF FINISHES



Yandles essentials

Woodturners Diamond Gloss Wax Polish:

- Unique formulation of the finest natural ingredients
- Simple to apply
- High-Gloss Finish

Only £8.99

Woodturners Sanding Abrasive Paste

- Specially formulated to reduce sanding time
- Easy to use
- Leaves a smooth finish with a soft glow

Only £12.99



What our customers say:

This is possibly the best wax polish I've come across yet for lathe work. CHRIS BOND

Great finish, easy to use and double or treble coats the finish gets better. DOUG SMITH

Good quality wax. As good as any I have used.

GEOFF CHRISTIE



Yandle & Sons Ltd 01935 822207 | www.yandles.co.uk

Boxes by Gillian Henley-Clover

Hi Graham

Please find 2 pictures attached.

I am calling these turnings - boxes.. I've looked up the definition of a box in my Collins dictionary and it quotes that ' a box is a container with a firm flat bottom and sides'so there we go.



Box (1)

Anyway, the first box, as all can see, is made from a spalted log that more than likely came from a hedgerow. I decided that my chunky box needed a chunky finial, so this I carved out of mahogany. My very first effort at carving which I did with the aid of my Dremel.

Box (2)

I made this box out of an old square table leg. I would guess that it is beech, it is quite a dense wood with little or no markings and it turned well. As can be seen, I have kept the square shape - another first for me. Please note the matching square finial.
Best wishes to all. Gil



THE MAIL ORDER ABRASIVE SPECIALISTS

Sanding needs as much care as construction and design. As much care needs to be taken in sanding as in the construction of a piece of work. A few minutes poor sanding technique can irreversibly destroy great craftsmanship and many hours work.



THE ULTIMATE ABRASIVE! RB406 J.FLEX. TRIAL PACK

1M OF CLOTH IN EACH OF THE FOLLOWING GRITS.

P80, P120, P240 AND P320 **£14.75** INC VAT ORDER CODE **12806 RB406**

J.Flex is the best abrasive for every workshop. It's ideal for turning, woodworking and metal working. The distinctive blue abrasive with the yellow backing is the softest and most flexible abrasive we have ever discovered. The ultimate abrasive for all kinds of woodwork, especially sanding in acute areas. This cloth can be twisted and folded without grain dis-adhesion. Rolls are 100mm wide. **ALSO AVAILABLE BY THE METRE.**



VELCRO-BACKED ROLLS.

TRIAL PACK 1M OF P100, P150, P240 AND P320 PLUS A SAMPLE STRIP OF VELCRO REPLACEMENT WITH PEEL OFF SELF ADHESIVE BACKING. **£14.75** INC VAT ORDER CODE 13159 ALSO AVAILABLE BY THE METRE. PLUS - IT PAYS TO BUY BIG.

WITH OUR BULK RATE PRICES YOU'LL SAVE MONEY ON THE GRITS YOU USE MOST.

Cut off any length to suit your own sanding application. Every workshop should have at least two or three grades of this to hand. Especially manufactured by Hermes abrasives for us. Ideal for those shop made sanding devices which you can now make to your own specification. Hook and loop, or velcro attachment does away with the unpleasant task of clamping the paper to the machine, allows rapid changing of the sheet and encourages the use of more grits extending the finish quality and life of the abrasive. Rolls are 115mm wide.

For your free catalogue call 01636 688888 or e-mail sales@abrasivesplus.com or visit our on-line shop at www.abrasivesplus.com where all our products are featured and it's free carriage!

CSM ABRASIVES PLUS UNIT 2 NORTHERN ROAD, NEWARK, NOTTINGHAMSHIRE, NG24 2EH

Boxes by Giles Headley

Hi Graham

Further to your call for pictures of lidded boxes, please find 4 photos attached.

I made both boxes in 2015, in July and November. This was my second year of regular turning, having reduced my working hours at the beginning of 2014 to allow weekly attendance at Coombe on Wednesdays.

Photos 1 & 2 are a box made from Hazel. The body interior is squared off in the bottom, with the lid

domed inside. The beads were formed with a 1/4" tool, rather than free-hand.

Photos 3 & 4 are a box

made from Laburnum. Both base and lid are hollowed to be nominally hemispherical. The light coloured outer layer of timber is quite soft but when retained provides a wonderful contrast to the dark heartwood.



They both measure about 75mm dia x 105mm tall.

Best wishes
Giles

A Box by Malcolm Waters

Hi Graham,
Hopefully I have attached a photo of a lidded box, as requested!
It was made on a Tuesday at the Club by the “A team”, Peter Wright and myself in a joint effort. It was turned from a branch of yew and is 4” high by just over 2” wide. Finished with sanding sealer and wax.

Hope that helps,

Malc



Ornamental Turning on a Standard Lathe

By
Phil Stephens

Ornamental turning has been part of woodturning for well over 600 years. The process came out of the desire to decorate objects beyond their natural design and shape.

Out of this desire two clear processes were established from the 15th century that developed into what we call ornamental turning today. A desire to produce decorative patterns that complement turned work, sometimes called “complex turning”, and the commercial need to produce a geometric engraved pattern that could not easily be produced except on a specialist lathe called a Rose Engine Lathe. (A good example of a rosette pattern that would have used a rose or geometric lathe before it could be done electronically would have been the flower patterns used on a bank note). So the combination of both these desires drove the development of the ornamental turning lathe.

It was an 18th century tool and lathe maker in London, Jean-Jacques Holtzapffel, who took-up the challenge and developed his high-quality edge and boring tools business into a specialised ornamental turning lathe business and fulfilled the need of decorative work up to the beginning of the art-décor period of the 1920s when the desire for such work declined.

[See link: 9286-385 Antique Holtzapffel Ornamental Turning Lathe, Circa 1881 « Gold International Machinery | The One Stop Shop for all of your Machinery, Equipment, Tool & Die Needs \(goldmachinery.com\)](#)



An Holtzapffel ornamental lathe built at the turn of the 18th century had the capability and capacity to support all forms of standard and ornamental turning and would have cost about £25, if ordered directly from Holtzapffel factory in London in about 1700. The same lathe today would put you back anything from about £500,000 if they were still being

Boxes by Bill Randle

Hi Graham - Re your email for pictures of lidded boxes.



Amphora and Stand. The amphora is made from Kingswood and is 60mm in dia x 115mm long, the stand is made of beech and is 150mm high. The legs are pinned and glued to the ring that the amphora sits in.



This is another shaped amphora box made from ash, the base and lid are walnut and the finial is African blackwood. The amphora is glued into the base. Dia 80mm x 170mm high.



This is my take on a ginger jar which I think is made from boxwood, please put me right if not. Dia 100mm x 140 high The lid was jam chucked to turn the outside and the jar to turn the base.

A square bowl made from purple heart with the lid from ash with a purple heart finial. The bowl is 100mm square and only 40mm thick.

Total height including the finial 160mm.



oOo

Continued from page 17

produced. All Holtzapffel lathes were hand-built, foot-cranked with no electrical motors and they only produced about 1600 lathes up to the decline of the business in the 1930s.

In recent times ornamental turning has had a form of renaissance in popularity together with the lowering of the cost of milling machines and their accessories. The capability to convert a standard wood turning lathe into an ornamental lathe becomes a possibility.

I should point out that a standard woodturning lathe adapted to support complex turning cannot replace Holtzapffel ornamental lathe capability. This is because to support both ornamental and rosary turning, a complex rosette pattern requires cam-like pattern movement of the spindle which would require a complex reconstruction of a woodturning lathe. However, it is possible to convert a standard commercial lathe to produce most ornamental patterns at a reasonable cost.■

RENEW YOUR MEMBERSHIP

To all members,

A really big thank to all of you who have renewed your membership. If you haven't done so yet please see the information below as how you can renew.

PLEASE PAY COOMBE ABBEY WOODTURNERS

Unfortunately, we are still not able to meet at the club so for memberships to go ahead this year we will be either completing by post or bank transfer.

Membership costs are outlined below – any questions please get in touch with Janine.

Individual member AWGB £18.00+£8.00= £26.00

Family AWGB £28 + £8.00 per person

2 people AWGB £28.00 + £16.00= £44.00

3 people AWGB £28.00 + £24.00 = £52.00

Cheques made out to

Coombe Abbey Woodturners

For all membership renewals please do one of the following:

1. BY POST.

PLEASE enclose a self-addressed stamped envelope

Mail your membership renewal cheque made out to Coombe Abbey Woodturners to

Janine Brindley (Treasurer) 19, Merrifield Gardens Burbage, Leics. LE10 2TE.
and as soon as I can I will post your new membership card out to you.

2. DIRECT to BANK

The costs are as outlined above plus £1.00 to cover postage.

Anyone wishing to pay directly into the bank please contact Janine Directly by
TEXT (07931417378) message or EMAIL (treasurercawt@yahoo.com).

PLEASE put your name and address in the message



I will reply giving you sort code and bank account number confirming your details.

3. Anyone who needs to **update their details** please TEXT or EMAIL me with your name and change of details.

4. If you know of anyone wanting to join as a new member, please ask them to contact Janine by TEXT or EMAIL a membership form will be sent out.

Unfortunately, from now on I will not be able to process memberships every day of the week, I teach (virtually) 4 days a week and look after my mum 2 days a week. Once a week I do chores around the house. So, from now on I am hoping to process requests just once a week, so you may need to wait a little longer for your membership cards to be returned to you.

I hope that everyone who has requested a renewal has received their membership cards. If, after about a week, you have not received your membership cards please get in touch again, if possible the reminder would be best by text message.

Stay safe and well. All the best for a better 2021. Janine. ■

————— oOo —————

An Appeal by Eric Taylor.

We as a club are still looking for someone to take over from Graham Ball as Editor of this magazine. I know that Graham is experiencing some worrying times because of the health of his wife and is finding it more and more difficult to deliver the Newsletter on time each month. If you have basic computer skills and think you may be able to step into Graham's shoes then please contact me using my number shown on page two of this Newsletter.

Having spoken to Graham he is quite willing to give some training and also make the transition over a period of time so the new editor would not be dropped in at the deep end. Please give it some thought and give me a call to discuss it. *Eric.*

Boxes by Tony Townsend

Hi Graham I hope you are well. I have sent a calendar box made in spalted beech and a bonnet box and I believe the top was made out of ash but the bow and brim sorry I can't remember as I made this a while ago.



Mad Hatter - My youngest son is a member of the VW Club and once a year they hold a themed Charity Auction. The theme this particular year was Alice in Wonderland - hence the Mad Hatters box made from purple heart. Apparently it sold very well .



Tower Box - Is a twin box made out of Wenge and Ash.



Square lidded box -
made from African
Blackwood. I made this
for one of the Daventry
shows to go on
Coombe's stand.
Wouldn't it be lovely to
be able to go to a Daven-
try (or any other show)
again sometime soon?



Round box - Made from Ash
with a Bubinga finial. ■



Introducing the Brand New Range of Woodturning Chucks and Jaws

We are extremely proud to introduce the brand new range of Record Power woodturning chucks and jaws. This exclusive new range has been developed using Record Power's extensive experience and knowledge of woodturning in conjunction with a group of highly experienced professional and hobby woodturners, to bring you the ultimate in quality, versatility and value.



Precision Engineered Gears

Super Geared True-Lock™ technology ensures high levels of accuracy to provide smooth and solid operation.



Jaw Fixing System

The SC3 and SC4 feature a jaw fixing which will not only fit the Record Power series of Jaws but is also fully compatible with Nova and Robert Sorby brand jaws.



Heavy Duty Jaw Slides

The improved and enlarged jaw slides give unsurpassed holding power and load bearing ability. They are made from high tensile steel, reinforced with nickel and copper and heat-treated to ensure superior strength.



Sealed Backing Plate with Full Indexing

The SC4 features a strong backing plate to protect the gear mechanism from dust and 72-point indexing around the full circumference.



Brand New Exclusive Jaw Range
Fully compatible with Nova brand chucks



See online for full details

SC3 Geared Scroll Chuck Package



SC4 Professional Geared Scroll Chuck Package



RECORD POWER
ESTABLISHED 1909®

www.recordpower.co.uk Tel: 01246 571 020

Over
100
years
Experience • Knowledge
Support • Expertise

RECORD POWER
STARTER KIT
CORONET
BUSINESS

Incorporating some of the finest and most outstanding woodturning tools and equipment in the world, Record Power has been established for over 100 years. Our products are made in the UK and are available in over 50 countries. We are proud to be a part of the woodturning community and to provide the highest quality tools and equipment to our customers.

PROOPS BROTHERS

ENGLAND • EST 1946

.COM

ALL PRICES INCLUDE POST AND PACKING

1000'S OF OTHER PRODUCTS

INSIDE, OUTSIDE PLASTIC CALLIPERS



Measurements

0 - 200mm M7176

£4.60

0 - 350mm W3509

£6.80

HARDWOOD SQUARES



75mm Hardwood & brass tri-square

W8000 £3.60



Hardwood sliding bezel

W8002 £3.60



Set of 4 Chip Knives W3249

£23

OILSTONE & BOX



£5.50

Fine and
coarse sides
W3330

CABINET SCRAPERS



Set of 4
W8014

£11

CHUCKS

Drill Chuck Set of 4
6mm 1MT,
10mm, 13mm & 16mm
with 2MT Arbor
Product code M7175
Also available individually



£24

20MM FINGER SANDER

Spring Loaded Mini Precision Sander,
20mm & 3 spare sanding belts .
UK Made Product code W3202
10mm and 40mm widths also available



£4

MAGNIFYING LAMP LIGHT 5 DIOPTER. DAYLIGHT BULB

Product code V5200



£36

Proops Brothers Ltd 34 Saddington Rd. Fleckney, Leicestershire, LE8 8AW

TEL 0116 2403400

WWW.PROOPSBROTHERS.COM

EBAY USER NAME: SPOORP

Boxes and Other Work

By
Phil Stephens

Hi Graham

In response to your request for Photos. I'm sending you some examples of work I have been experimenting with using Ornamental turning.

Phil



Work by Robert Smith



Let TMS look after your Volvo



SALES // SERVICE PARTS // ACCESSORIES

With over 300 years combined experience of working with Volvo, nobody knows your Volvo like **TMS**.

With award-winning levels of customer service and state-of-the-art facilities at Trinity Marina, what ever your Volvo requirements, the **TMS** team can deliver.

**Call in and
see us soon!**



QUALITY • CARE • PERSONAL SERVICE



TMS VOLVO HINCKLEY

Trinity Marina, Coventry Rd,
Hinckley, Leicestershire LE10 0NF
TELEPHONE: 01455 632478

www.tmsmotorgroup.co.uk/volvo

Boxes by Terry Ivins

Hi Graham I did see your coombe e-mail and your request for pictures so here goes,

1. This was a very early attempt at this type of box and it brings back memories of my work mates and the help several of them gave me by bringing in " pieces of wood" more so in this case the fragrance associated with this piece of timber. The timber is a piece of elm and it was made 13 or 14 years ago and as with so many pieces it



was based on a

piece I had seen and I have to admit my own design ultimately.

Main part is made from Elm with the base, the joint point inlay ring and the finial are all from Oak. the size of this piece are 150.mm in diam, 220mm from the foot to the base of the finial along with the finial being approx 80 mm. in length.

As I mentioned my work colleagues were a good supply of timber and a group of four took me out one lunch time to get this piece of timber which was in the corner of a field, as a precaution I took my bow saw along with me, i was surprised to see that two other members also had saws but thought they just wanted fire wood .

OK cut it short , the timber was a large elm tree that was wind blown in a field right next to a water trough used by the large herd of cows who were in residence and had left some large fresh cowpats around the area but we still managed to cut several pieces of timber between us.

After a lengthy period of storage the fragrant odour coming from the Elm reduced thankfully, and I thought this may be a good choice also time to



attempt the body of this piece, so I started to turn and saw the attractive grain pattern emerging.

The finial was made from a piece of oak, it was however at that time not the best choice for a near novice, so the one pictured was not the first attempt nor is it the second, Oops!. The design is somewhat wanting and I can hear Danny saying " yes wanting someone who knows what he is doing !".

The finish I used was Acrylic sanding sealer and Acrylic Satin Lacquer, I did however need to use a large part of the can of Satin Lacquer the reason, it came to light when turning the body there was a smell that was released that reminded me of a field full of cows near wood gate valley.

As with so many pieces sorting bit of inspiration from the net " Pinterest be more precise" found a pleasant form and thought I need to have a go at this which is approximately 120mm. in diameter x 80.mm in height.

The body of this form was turned from a piece of Beech and the lid is a piece of Mahogany going to be classy and say that this remind me of some of the craft that I came across while I was working in Japan, simple form but the handle was the piece that makes the vessel for me and I was pleased it sold .

The feature handle was made from a piece of Pink ivory which was just enough to make the two end pieces of the bar of the handle along with the bead spacer which stands the handle away from the lid. The main piece of bar is made from African black wood and the piece had a very simple finish of Chestnut Finishing oil.

This was a practise piece that I wanted to do as I had been asked to make a bigger piece for a friend and had not used spirt stain for some time and it was



A box by Colin Grundy

Hi Graham,
In response to your request for lidded boxes, please find attached a box I recently made from Spruce.



oOo

Continued from Previous page

something that would be seen as a representation of what the finished piece would look like.

This piece was made from Beech and having been given almost no details of form other than "you know the coloured vase you made, but with a top" I suppose you have to say, Great, Super, Smashing absolutely wonderful.

So I made this and added Ebonising lacquer followed by Chestnut Spirit Stain to the entire outer face of the base and added a feature ring using the same colouring method to the face of the lid, to the top, to add a focal point I used up a piece of an acrylic pen blank that was sitting on the shelf. the piece was finished using Acrylic Satin lacquer.

The piece was 120mm. in diameter and 80mm in height, the customer liked the piece but not the top which was made from the Acrylic, she "wanted a turned piece of wood!" so made her a piece with a turned piece of African Blackwood very pleased.■

An Invitation

from Chairman Martin Harper of
“Tudor Rose Woodturners”

Hi Graham

We would like to invite Coombe Abbey members to our Thursday zoom meetings. We have a good round-up of both UK turners and international turners Up to June we Have Colwin Way, Jason Breech, Paul Hannaby, two turners from the USA - Alan Lacer conducting a skew master class and Mike Pearce who does a lot on youtube.

We have agreed that visiting members of other clubs will be charged £5 per meeting which equates to an in-person charge at the club “Tudor Rose” will bear any additional costs, Prices vary from £150 up to £400 depending on the demonstrator usually overseas demos are circa £350 (Cindy Drozda wanted more)

We hopefully, if we can get a few more onboard than we currently achieve, will be able to have two remotes per month, that being the case it may be cheaper if visitors join “Tudor Rose” on a temporary basis (if they want) and then the charge would be £8 per month. Our treasurer is Ok with either way, we currently have a few who are members of both clubs already

The reason I am writing is to request that you drop the invitation in your next Newsletter, if you could include our web address future remotes are in the calendar.

<http://www.tudor-rose-turners.co.uk/>

Hopefully we will come out of covid with the clubs strong and intact and I think remote demonstrations are helpful in keeping all in touch

Keep safe

kind regards

Martin

3-Piece Mini Carbide Turning Tool Set



The Mini Carbide Turning Tool Set is ideal for turning small projects, such as boxes and goblets, and is also extremely useful for turning pens in wood and acrylics. The set consists of three tools, each with a rubber handle for extra grip and comfort to reduce fatigue. The carbide cutters will stay sharp for a long time and when required, they can be rotated to give a fresh edge or can simply be replaced. Each tool features its own cutting profile; round, square and diamond-shaped, perfect for roughing out, finishing and fine detail work.



"This set is really good and exceeds my expectations. A good selection of tools presented in a robust carry / storage case. Really good value for money."

Phill, Turners Retreat customer

Price: £74.95 inc. vat



Code: CTT1

Prices may be subject to change without notification.

Scan the code to watch the tools in action.



www.turners-retreat.co.uk

01302 744344 | eshop@turners-retreat.co.uk
2 Faraday Close, Harworth, Nottinghamshire, DN11 8RU



*New
Product*

charnwood

*New
Product*

Woodworking machinery at its best!

B250 10" Premium Bandsaw



**New Premium Grade 10"
Woodworking Bandsaw ideal for
woodturners**

- Huge 6" Cutting Depth Capacity -
- 10" Cutting Width (Throat)
- Supplied with High Quality British Made Blade
- Precision Ground Cast Iron Work Table
- Quick Action Lock On Rip Fence -
- Crosscutting Mitre Guide Included
- Quiet Induction Motor
- Mains Powered LED work Light -
- Integral Dust Collection Tray
- Includes Floorstand
- Primarily used for Woodworking

£299

Also available

B300 12" Premium Bandsaw £459

B350 14" Premium Bandsaw £579

Now in stock & on display in our
Leicester Showroom

For our full range of Bandsaws
call 01530 516926 for your FREE catalogue
or visit our website www.charnwood.net or showroom at
Cedar Court, Walker Road, Bardon Hill, Leicester, LE67 1TU

A few Pictures

By
Tony Townsend

Hi Graham, I have gone through my archives to see if I could find any interesting wood photos and although they are not wood turning they really are quite a work of art. Must admit don't think I would want to handle any pieces of wood that large !! They were taken a few years ago at Westonbirt Arboretum on one of their Wood Festival weekends. Haven't been there for a little while and must admit it would be very nice to have a day out so like everyone we are



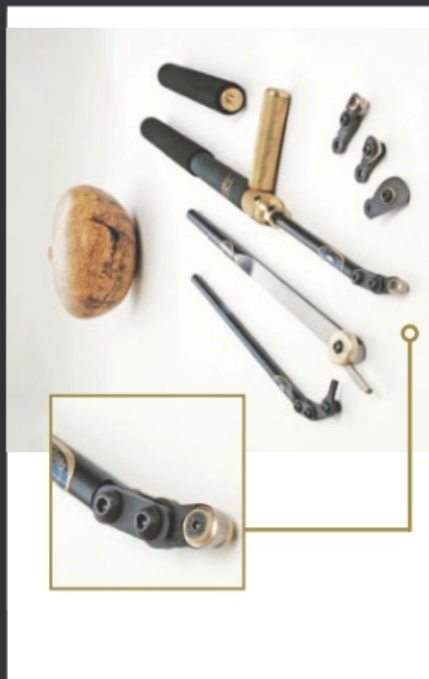
hoping this virus situation will soon ease to allow for days out and of course to allow Coombe Abbey Woodturners to get back to business.

INTRODUCING THE NEW REVOLUTION

The "revolution" is a completely new hollowing system from the world leaders in fine turning tools. From its beautifully weighted handle to its cryogenically treated cutting tips the "revolution" is designed to be the finest hollowing tool on the market.

The modular articulated design allows the woodturner the freedom and flexibility to configure the tool for any situation. From straight vases to heavily undercut hollow forms the "revolution" has it covered.

At the heart of the "revolution" is the new fully depth adjustable "super ring" the revolutionary design of the "super ring" ensures clean efficient wood removal at all times with 5 different cutting tips and modular articulation design the revolution is a must have tool for all woodturners.



- Supplied with 5 different cutting tips for unrivalled flexibility.
- Clever modular design allows for many different configurations.
- All collars and collets beautifully machined from solid "marine grade" brass billet.
- High performance cryogenically treated cutting tips for vastly improved wear resistance.
- New adjustable "Super ring" allows ultra efficient wood removal without clogging.
- Slim line articulated tip design for unrestricted access to those hard to reach cuts.
- Expandable.
- Hand made in Sheffield, England.



Tel. 0114 261 2300

Fax. 0114 261 2305

Web. www.crownhandtools.ltd.uk

Email. info@crownhandtools.ltd.uk

Little Sister Big on Performance

Little Sister is a mini hollowing tool based upon the highly successful Brother System 2 range

Talk with your Hamlet
Stockist today

Compact fixing screw
Hollow through 13mm
openings with ease!

Tapered Stem
for maximum rigidity

Proudly
Made in the UK

DVD
video
Free DVD
included

3 configurations available



hamlet
CRAFT TOOLS

sales@hamletcrafttools.com
www.hamletcrafttools.com
+44(0)1142321338

Ask about the interchangeable scraper - Ref HS187B



Evolution is not just a theory

AXMINSTER EVOLUTION SK114 CHUCK PACKAGE

Undeniably the best chuck on the market and at the top of its game, the Evolution SK114 Chuck is designed for the true professional and those who aspire to turn like one.

- Made from stainless steel to resist corrosion and machined to a tight tolerance for a perfect fit of both jaws and lathe spindle.
- The body is machined from one piece of steel to ensure perfect concentricity.
- Compact design keeps the chuck as close to the spindle bearings as possible, ensuring superb resistance to vibration.
- All chucks include dovetail C jaws, matching faceplate ring, screw chuck and chuck key



The Axminster 5 year guarantee applies to all Axminster precision chucks.

It's probably one of the most comprehensive guarantees ever.

- Cover includes use in a professional environment
- No registration necessary – just keep your proof of purchase
- Terms and conditions apply – please see axminstertools.com

NEW PACKAGE



Made in Axminster

Thread sizes available:

T04M 1" x 8tpi

T38 M33 x 3.5mm

T23 1 1/4" x 8tpi

T02RL 1 1/2" x 6tpi

T38R M33 x 3.5mm

AXMINSTER

Tools & Machinery

To see the quality of these products, **visit one of our stores**, search axminstertools.com or call **0800 371822**.

For the complete Axminster experience and to keep up with Skill Centre courses, events, news and much more, browse our website or follow us on social media.

Prices may be subject to change without notice.



Rated 'Excellent' on



Trustpilot



Childs Toy by Terry Ivins.

I have been tempted into making a toy for my youngest daughters first child who was one year old at the start of March, not as is usual my idea, but saw it on the internet and thought I would have a go at making one. The base of the toy is a block of Tulip wood and the individual pieces have been made from Oak and Ash, as to be expected the individual pieces were cut and profiled on the band saw but the drilling of the pieces was all done on the lathe with the aid of very simple jigs and a good supply of double sided tape.

The five different shaped pieces were then given two coats of of Chestnut Iridescent paints in the colours shown.

The unfortunate out come is that as we all are in at these current time, as of yet we are not able to pass over this present, hopefully this will happen in the coming weeks.

