



ALPHATRON  
Marine



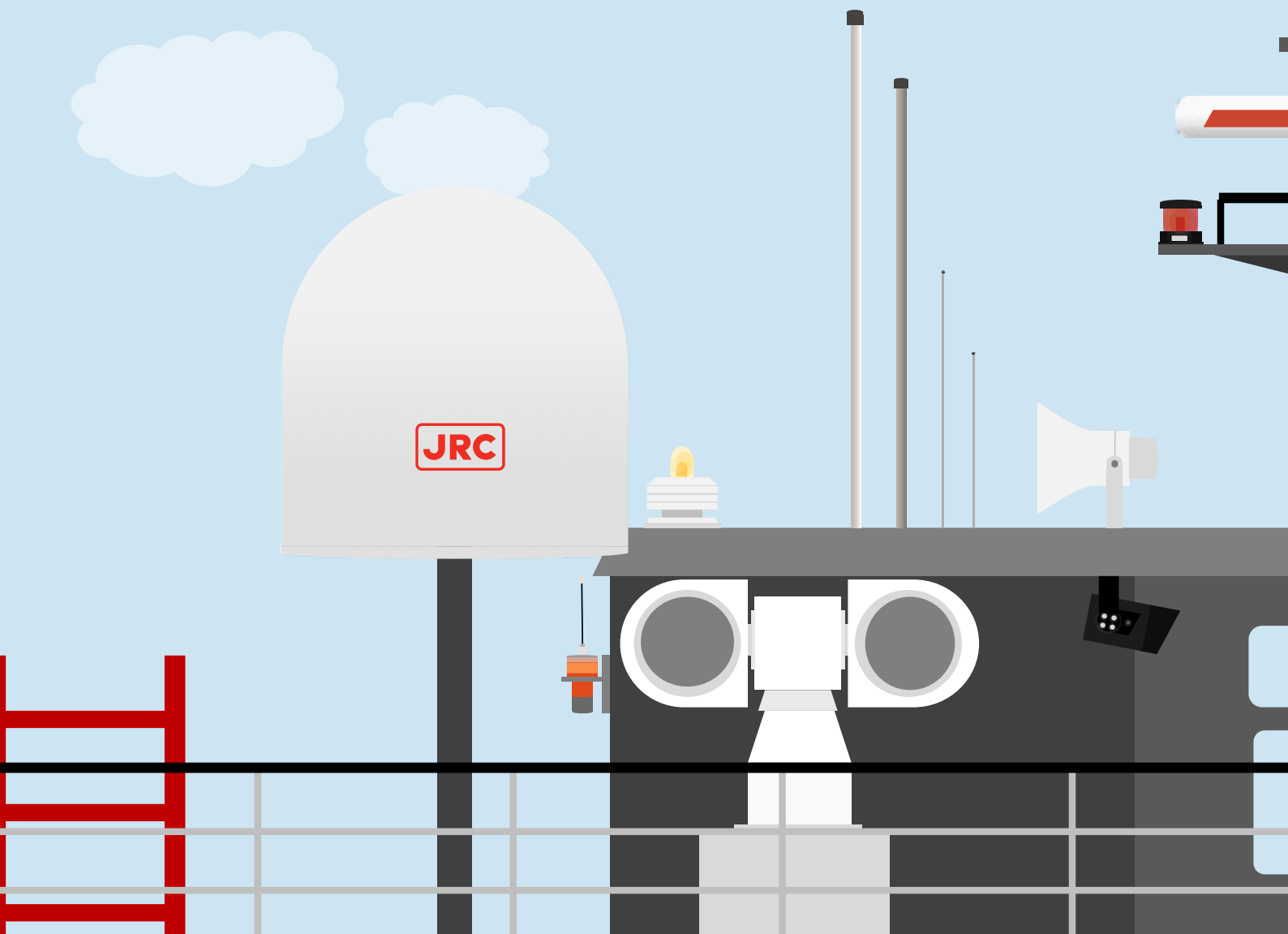
# ProLine

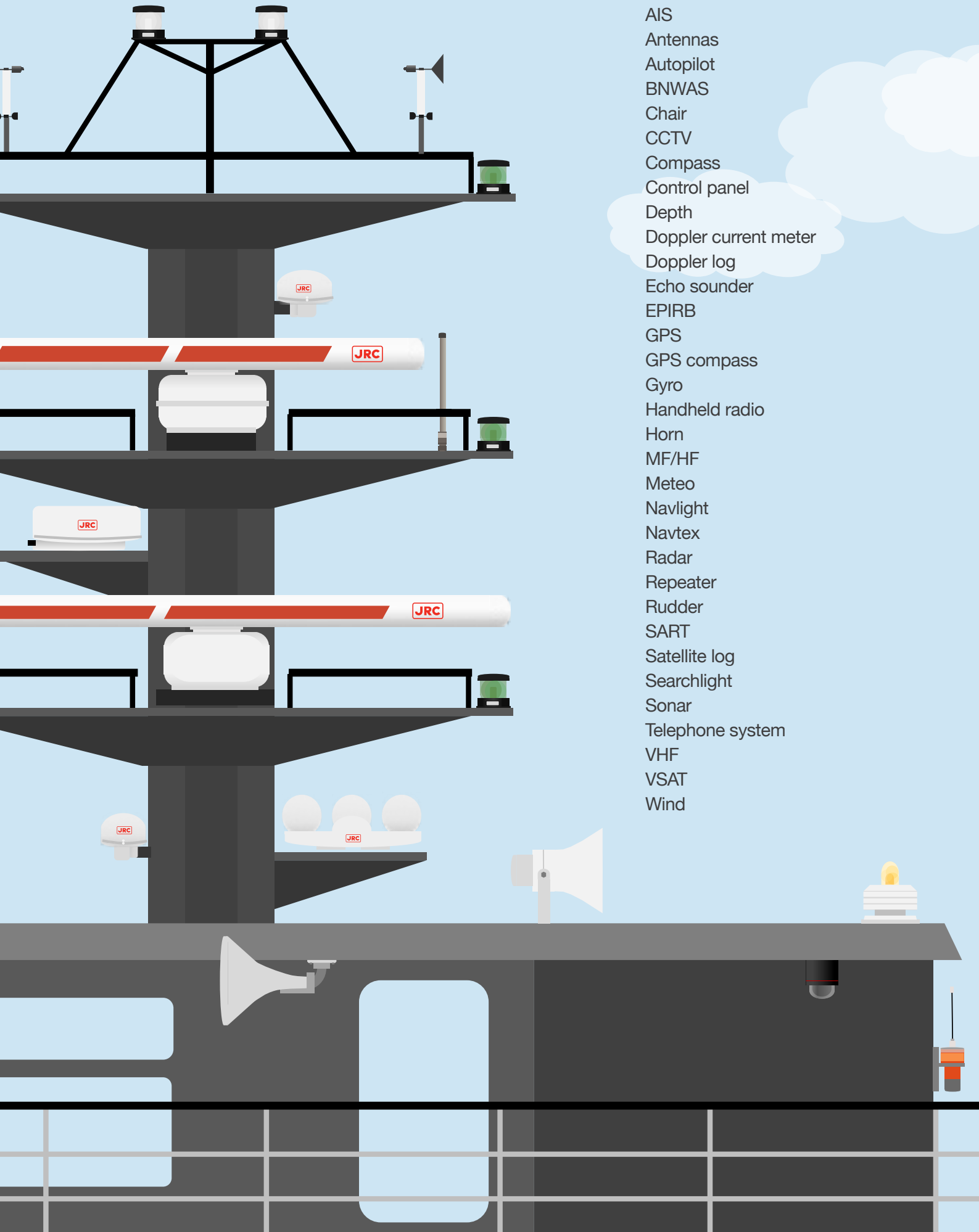
Total package for marine professionals

[alphatronmarine.com](http://alphatronmarine.com)

# A total wheelhouse package for the marine workboat professional

Introducing ProLine, a total package with professional equipment applicable for various sized IMO and non-IMO intercoastal, workboats, tugboats and fishing vessels ranging from <500GT up to 10.000GT. With the unique strengths of key manufacturers, JRC/Alphatron Marine is able to unburden customer or shipyard by globally offering a proven, complete and one-stop-shopping equipment line-up, something not seen before in the marine industry.





- AIS
- Antennas
- Autopilot
- BNWAS
- Chair
- CCTV
- Compass
- Control panel
- Depth
- Doppler current meter
- Doppler log
- Echo sounder
- EPIRB
- GPS
- GPS compass
- Gyro
- Handheld radio
- Horn
- MF/HF
- Meteo
- Navlight
- Navtex
- Radar
- Repeater
- Rudder
- SART
- Satellite log
- Searchlight
- Sonar
- Telephone system
- VHF
- VSAT
- Wind

# Navigation

## Radar



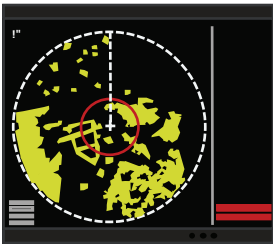
### JMA-1030 Radar

- 7-inch wide VGA color touch display
- Proprietary System-on-Chip technology
- Simple and intuitive operation
- AIS and MARPA+ as standard
- High performance scanners



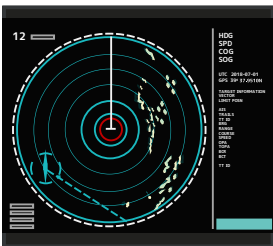
### JMA-3300 Radar

- 10.4-inch ultra bright LCD
- New System-on-Chip technology
- Semi-Constaview digital signal processing
- AIS and MARPA+ as standard
- Proven multi-speed scanners



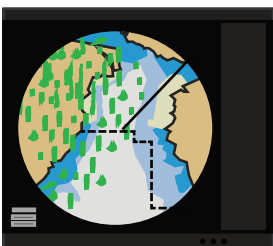
### JMA-5200 PROLINE Radar

- 17-inch or 21-inch high visibility display
- Constaview digital signal processing
- TEF multi-level target enhancement
- High speed version available
- Brushless antenna motors for extended lifetime



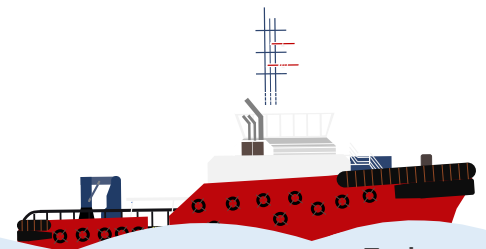
### JMA-5300 PROLINE Radar

- 19-inch high visibility LCD screen
- Constaview digital signal processing
- TEF multi-level target enhancement
- High speed version available
- Brushless antenna motors for extended lifetime



### JMR-5400 Radar

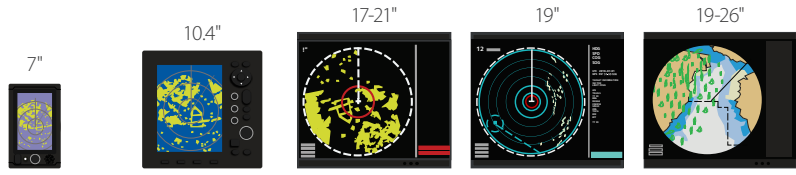
- 19-inch or 26-inch ultra bright LCD display
- Black box design
- New and dedicated keyboard
- Supports C-MAP MAX and new pec charts
- Newly developed scanners for specific applications

















Tugboat

# Navigation

Radar



		Length	TX power	HSC		7"	10.4"	17-21"	19"	19-26"	
						JMA-1030	JMA-3300	JMA-5200	JMA-5300	JMR-5400	
NKE-1066		1.5ft	4kW	v	X-band	V					
NKE-1034		2ft	4kW	v		V					
NKE-2043		2ft	4kW	v			V	V			
NKE-2063		3.9ft	6kW	-			V	V			
		3.9ft	6kW	v			V	V			
NKE-2103-4		4ft	6kW	-			V	V	V	V	
		4ft	10kW	v			V	V	V	V	
NKE-2103-6		6ft	10kW	-			V	V	V	V	
		6ft	10kW	v			V	V	V	V	
NKE-225x-6		6ft	25kW	v					V	V	
NKE-225x-7		7ft	25kW	-					V	V	
NKE-225x-9		9ft	25kW	-					V	V	
NKE-2632		8ft	250W	-		S-band					V
		8ft	250W	v							
NKE-1632		12ft	250W	-							
NKE-1130		12ft	30kW	-					V		V
NKE-3710-8		8ft	70kW	-							V

V Available configuration

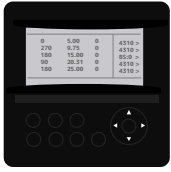
V SOLAS/IMO approved 



Multi-purpose vessel

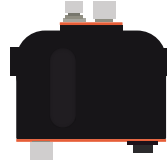
# Navigation

AIS, Autopilot, GPS, Navtex



## JHS-183 AIS Class A

- 4.5-inch high brightness display
- Dual color LED backlight
- Displays up to 200 AIS targets
- Proven transponder design
- Advanced interfacing possible



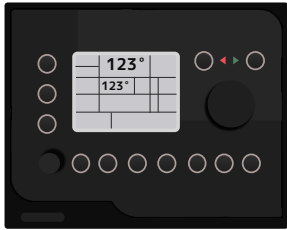
## B300 AIS Class B

- Small and lightweight
- NMEA0183/2000 interface
- Internal GPS antenna
- Fully ruggedized
- Various approvals



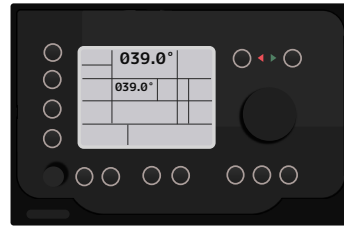
## AlphaPilot Autopilot

- 5-inch color touch display
- Flexible system configuration
- Simple and intuitive operation
- Uniform product philosophy
- Adaptive control technology



## AlphaSeaPilot MFC Autopilot

- MED vessels <3,000 GT
- Type approved for HSC
- Off course and watch alarms
- 1 rudder feedback unit input
- Distribution unit NT888G



## AlphaSeaPilot MFA Autopilot

- MED vessel >3,000-10,000 GT
- Type approved for HSC
- Off course and watch alarms
- 2 rudder feedback unit input
- Distribution unit NT999G



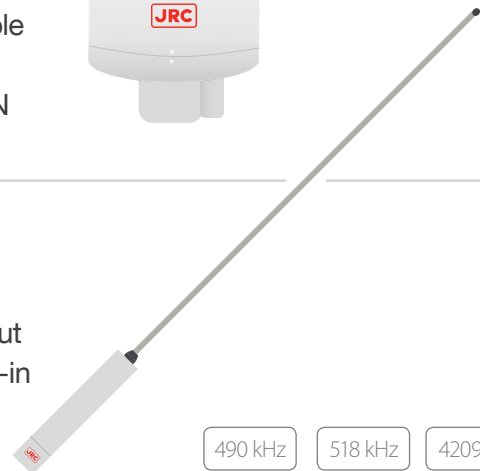
## JLR-8600 GPS

- 6.5-inch touch screen
- Multi-GNSS sensor
- Up to 22 satellite signal trackable
- Intuitive and trusted operation
- Share route with ECDIS via LAN



## NCR-333 Navtex

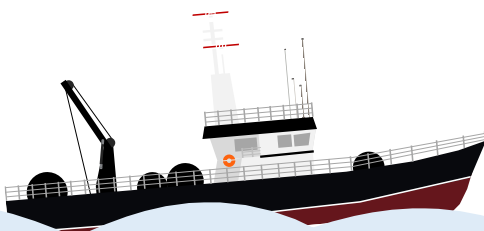
- 5.7-inch high visibility display
- Automatic switch with GPS input
- 24 hour message memory built-in
- Printer output
- Intuitive menu structure



490 kHz

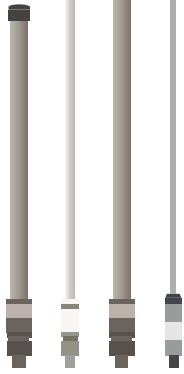
518 kHz

4209.5 kHz



Fishing vessel

Antennas, Handheld radio, MF/HF, Telephone system, VHF, VSAT



## Antennas AM, FM, HF, LF, VHF, UHF, GPS

- Proven technology
- Designed for maritime environment
- Competitive pricing
- High quality
- Full omni-directional radiation pattern



## JSS-2150 MF/HF

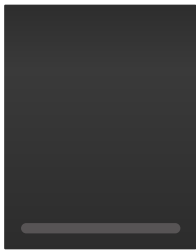
- 3.8-inch high brightness display
- Standard 6 channel DSC watch-keeping built-in
- Flexible black box configuration
- Digital audio and integrated speaker
- Easy operation with JOG dial



McMurdo R5 Sailor SP3520

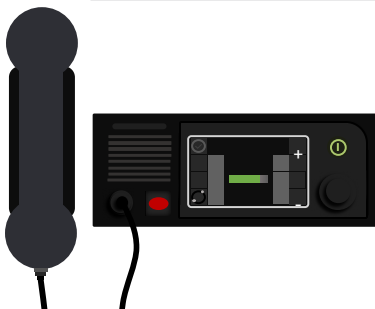
## Handhelds VHF, UHF

- GMDSS approved
- High quality
- Robust design
- Larger buttons
- Clear display



## AlphaConnect Classic Telephone system

- Compact and robust design
- Talk back system
- Analog, digital and VoiP based
- Adaptable and easy configuration
- Dual power supply



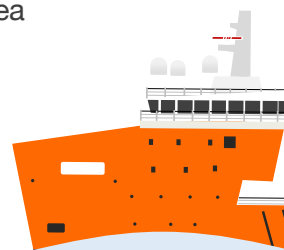
## JHS-800S VHF

- 5-inch color LCD touch display
- Class A DSC complying latest GMDSS requirement
- High quality sound (Hi-fi audio)
- Easy to install by compact design
- Bluetooth interface for wireless speaker



## JUE-60KA VSAT

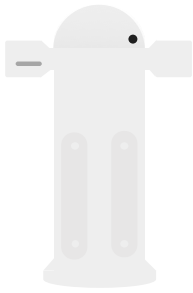
- Type approved for THOR 7 HTS
- Lightweight yet ultra strong radome
- Installation quick and easy
- Supports Remote Maintenance System (RMS)
- Unlimited high speed internet at sea



Platform supply vessel

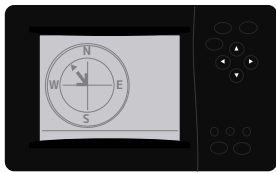
# Heading & Speed

Compass, GPS compass, Gyro, Satellite log



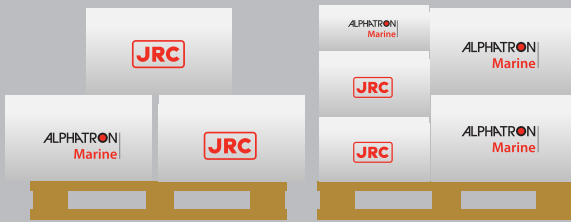
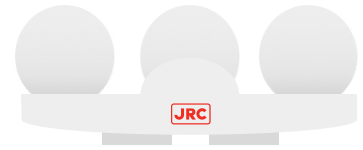
## AlphaBinnacle Compass

- High quality hardware design
- Reflector, non-reflector or both
- Reduced shipyard installation work
- Improved water tightness around deck/periscope area
- Low voltage lighting within the binnacle

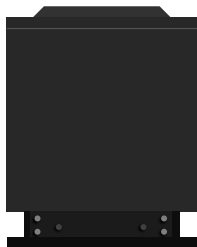


## JLR-21 GPS compass

- 5.7-inch high visibility display
- Roll, pitch, ROT, heave integrated
- High speed tracking response (ROT 45°/sec)
- Dynamic accuracy 0.5° or 0.25° rms<sup>1</sup>
- Wide range of display modes available



The ProLine package will be sold with a 3-year limited warranty on parts. Essentially all equipment will be delivered ex-factory and can be integrated where needed. With direct support from the manufacturers, JRC/Alphatron Marine is now closer to the customer on a whole new level.



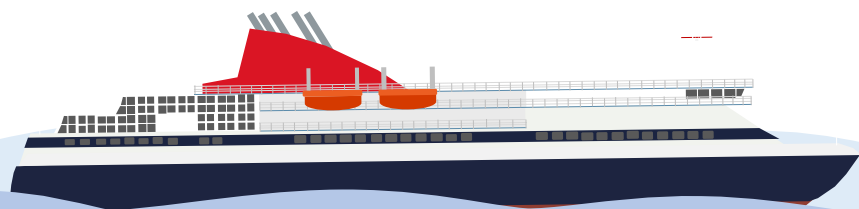
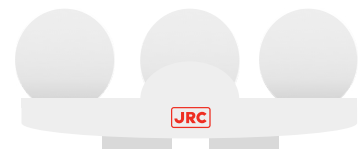
## AlphaMidiCourse Gyro

- Small size and versatility
- Automatic speed error correction
- Short initial settling time (within 3 hours)
- High reliability
- No periodic compensation of azimuth drift



## JLN-720 Satellite log [SDME-SOG]

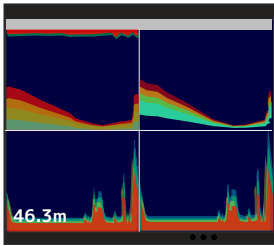
- 5-inch color touch display
- Highly accurate speed measurement
- Triaxial vessel speed calculation
- Intuitive operation
- Advanced interfacing



Ro-Ro

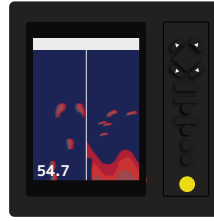


Echo sounder, Depth, Doppler current meter, Doppler log, Sonar



### JFC-180 Echo sounder

- Advanced 3 kW TD
- Black box design
- Dedicated keyboard
- XGA display resolution
- Flexible interfacing



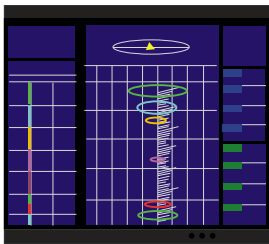
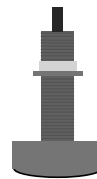
### JFC-800/810 Echo sounder

- 10.4-inch sunlight viewable display
- Advanced digital signal processing
- Dual frequency 50/200 kHz
- Displays approximate fish size
- NMEA data in/output



### AlphaDepth Depth

- 5-inch color touch display
- Shallow depth alarm
- Selectable depth scales and units
- NMEA output sentence
- Connect multiple transducers



### JLN-650/652 Doppler current meter

- 15-inch display
- Many independent measuring layers
- Four beam transducer for optimal performance
- Automatic bottom current tracking
- Dedicated keyboard

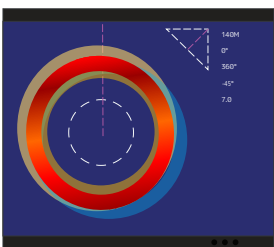
125 kHz

240 kHz



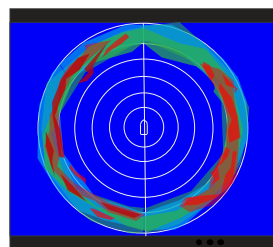
### JLN-740 Doppler log SDME-STW

- Highly accurate speed and distance log
- Proprietary bubble detection
- Intuitive operation
- Precise navigation during berthing
- Supports remote maintenance



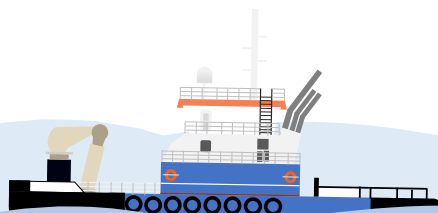
### JFS-280 Scanning sonar

- 360 degrees fully stabilized
- Robust stainless steel transducer
- Astonishing discrimination
- High power and long range detection
- Auto tilt and auto retractable hull unit



### JFP-185 Searchlight sonar

- Black box design
- Multiple display modes
- Space saving hoist unit
- Easy operation
- Data transfer by USB



Dredging support

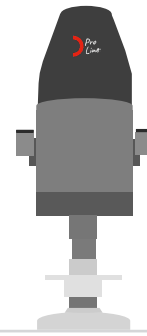
# Repeater & Options

Chair, Control panel, Meteo, Repeater, Rudder, Wind



## AlphaCommandChair Chair

- Full control in armrest
- Height adjustable column with gas-spring
- High quality material
- Adjustable footrest, backrest and seat
- Forward/aft adjustment of seat



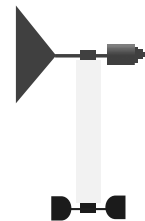
## AlphaControPanel Control panel

- Tailored made control panels
- Available in different sizes
- Easy "snap-on" installation approach
- Same design philosophy
- Central dimming possible



## AlphaMeteo/AlphaWind Meteo/Wind

- Wind (wind)
- Wind, atmospheric pressure and temperature (meteo)
- Reliable sensors available
- Same design philosophy
- Central dimming possible



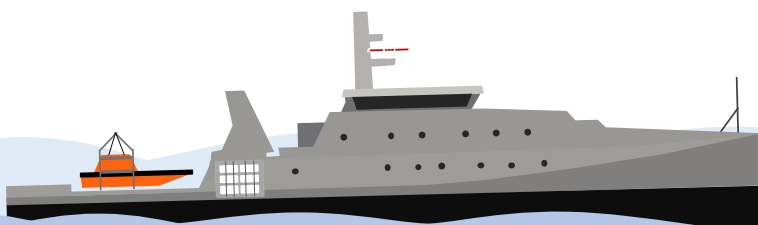
## AlphaRudder Rudder

- 5- or 6.5-inch touch screen
- Show rudder angle accurately
- Expand with rudder feedback unit
- Same design philosophy
- Central dimming possible

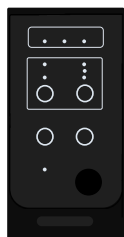


## AlphaLine Repeater Repeater

- High brightness touch screen
- Three sizes, two bezel colors
- Wide viewing angle
- Intuitive user interface on common platform
- Extensive interfacing and easily exchangeable

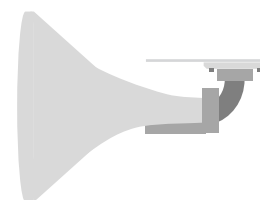


Coastguard



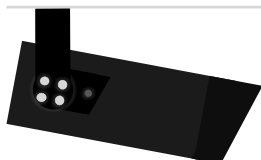
### AlphaBNWAS BNWAS

- Cost-effective design
- Operator friendly
- IMO approved
- Flexible configuration
- Uniform product philosophy



### AlphaHorn Horn

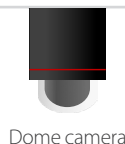
- Rugged design
- Wide selection
- Long range
- IMO approved
- Commercial use



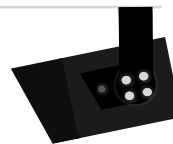
Zoom camera

### AlphaCam CCTV

- PAL-AHD camera line
- Fixed, zoom and dome
- Real time images
- Robust and durable design
- Long length (coax) cabling possible



Dome camera



Mini camera

### Various models EPIRB/SART

- Lightweight and watertight design
- Easy and flexible mounting
- Designed for search and rescue (SAR)
- Meets GMDSS standards
- Improves safety of life at sea



JQE-103



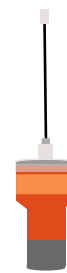
TRONSART20



TRON60S/GPS



S5 AIS SART

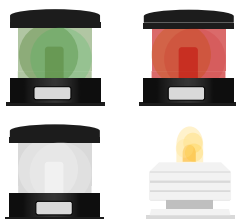
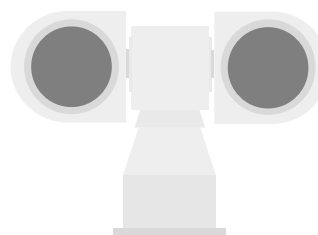


Smartfind G8 AIS



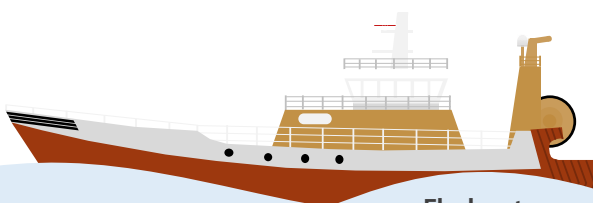
### AlphaSearchLight Searchlight

- Powerful and compact LED
- Reliable and durable
- Up to 100,000 light hours
- Smart control system
- Modern and functional



### AlphaNavLight Navigation light

- Robust design
- Waterproof IP66
- Maintenance friendly
- Main & spare LED modules
- No noise interference



Flyshooter



# Pro Line

## Office locations

Belgium	+32 3 685 2196	Korea	+82 51 714 1862
China	+86 21 2024 0608	Malaysia	+60 7509 6435
Curaçao	+5999 664 0504	The Netherlands	+31 10 453 4000
France	+33 6 1103 0495	Poland	+48 91 4310 450
Germany	+49 4101 377 10	Singapore	+65 6863 0335
Greece	+30 210 935 5061	Spain	+34 915 022 196
Japan	+81 3 3492 9201	USA	+1 281 271 4600