

EFFICIENTLY TRACK PHYSICAL OF DOCUMENTS WITH

INFOMAX' EFFICIENT PHYSICAL
DOCUMENT TRACKING SYSTEM



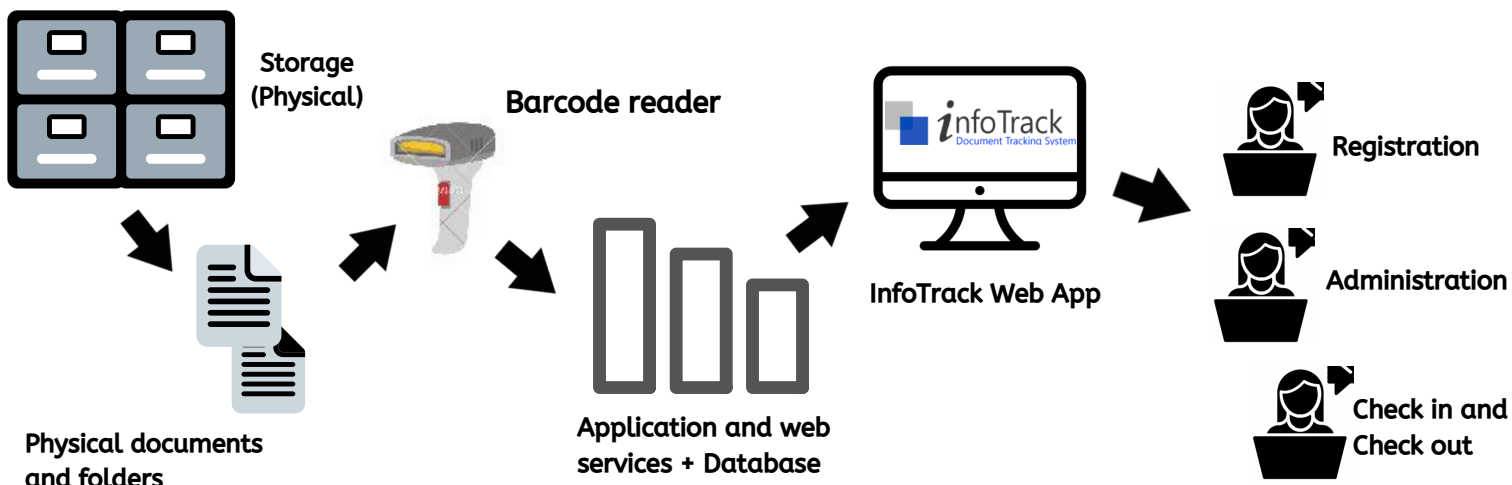
Your trusted physical
document tracking system

What is InfoTrack?

Automate your document tracking
system and **organize your folders better**

Infotrack is a web-based solution that allows you to track physical documents and folders from registration to disposal as it moves within or outside your organization.

**Straightforward and easy-to-use
tracking system**



Why your business needs it:



AUTOMATED TRACKING SYSTEM

Web-based document library system organizes your documents' movement in or out of the organization



FLEXIBLE SYSTEM

Customizable to meet clients' requirements and it can be integrated with document management systems through API services



EXCELLENT CAPACITY

Supports multiple physical locations and uses service-oriented architecture that allows both increased capacity without degrading performance.

Be efficient. Track your physical documents better with InfoTrack

Easy document registration:

The process starts through a registration procedure where documents in folders are registered by the Custodian. The system can accommodate multi-storage sites from a central database.

The registration process logs the contents and storage location of the folders. Storage can be in different buildings, floors or cabinets. Barcodes can be printed on the folders and documents for ease of use.

Simple borrower function:

A borrower can then request to borrow a folder or a document within that folder. A borrow slip can be printed and signed by the borrower to confirm the documents being borrowed.

Versatile multi-location feature:

The system can accommodate multi-storage sites from a central database.

Smart document inventory:

A status is provided on each folder or document indicating whether the document is available, borrowed or missing.

Secure approval routing:

All approved borrowing is routed to the proper approver.

Out-of-the-box reports

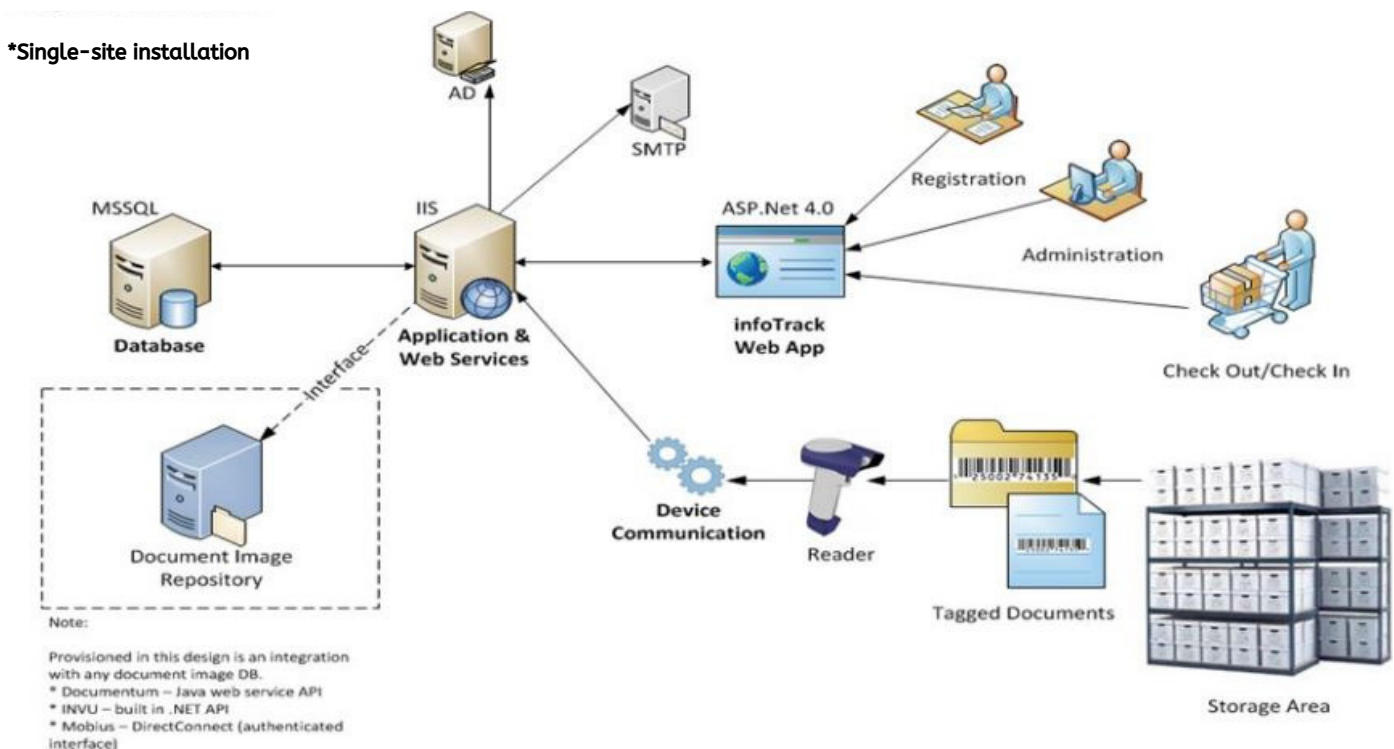
The InfoTrack solution comes with the following out-of-the-box reports:

- ➔ List of missing documents
- ➔ List of incomplete folders
- ➔ List of borrowed documents

Strong security

Access to the database can be controlled by role (Administrator, Custodian, Borrower, and Approver). An audit trail is provided to indicate document movement.

Complete System Architecture:



System Requirements

Server:

- CPU: Intel i5 8th gen processor or better / 4th gen @3.3ghz (Min.)
- Memory: 32GB RAM / 16GB RAM (Min.)
- Storage: 2TB Available HD / 500gb available HD (Min.)
- OS: 64bit Win2003/2008
- Database: MSSQL 2008r2/2012

Framework: .NETFramework 4.0
- IIS: Version 6/7

Workstation:

- CPU: i5 4th gen processor @ 3.0 ghz
- Memory: 4gb RAM
- Storage: 500gb or higher
- OS: 64bit Win 7 / 8 / 10

* Barcode Scanner:

Handheld Laser barcode Scanner (e.g. Symbol LS1 203 Scanner or equivalent)

Part of the InfoSuite series

