



GypWall

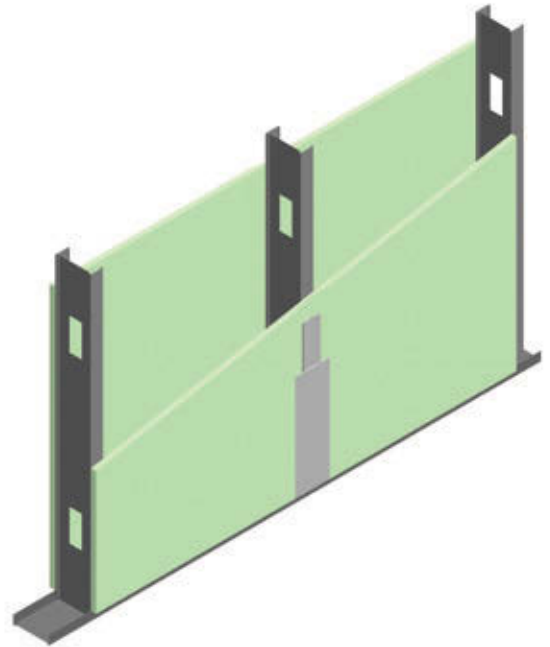
**MoistureResistant**

## MoistureResistant Systems

Is a lightweight, non-loadbearing walling system of where the Gyproc MoistureResistant board has water repellent additives in the core and a distinctive green waxy paper liner.

### Key facts

- Non-loadbearing
- 60 min fire rating
- Used in wet areas like bathrooms and kitchens
- Lightweight alternative to traditional constructions
- Donn UltraSTEEL™ framework will not twist or warp
- Less material wastage, cleaner site conditions
- Environmentally friendly products



### Applications

Suitable as a base for tiling wet use areas. Also used for external soffits in sheltered positions.

### Sector

Commercial | Health Care | Educational | Retail | Sports & Leisure | Industrial | Residential

### Performance

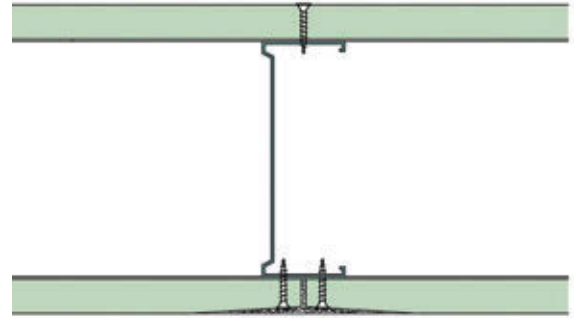


**FIRE RATING**  
Fire rating 60 minutes.

## Performance

### 1 GypWall MoistureResistant 102/F60

1 layer Gyproc MoistureResistant 15mm fixed to both sides of the framework using Gyproc RhinoBoard Sharp Point Screws 3.5mm diameter x 25mm at maximum 220mm centres. All joints shall be staggered. Framework consisting of Donn UltraSTEEL™ Studs 102mm x 35mm friction fitted into top and bottom Donn UltraSTEEL™ Track 102mm x 25mm at 600mm centres. In areas with tile finishes, reduce stud spacing to 400mm centres. Apply Gyproc RhinoTape to all joints and internal corners. Install Donn Corner Bead to all external corners.



Detail	System name	Stud size (mm)	Board type	Lining thickness* (mm)	Cavity insulation (mm)	Fire rating (min)	Sound rating R <sub>w</sub> dB	Nominal thickness (mm)	Maximum allowable height** stud spacing		
									600mm	400mm	300mm
1	GypWall MoistureResistant 102/F60	102	Moisture Resistant	1x15	-	60	-	132	4700	5100	5400

\*Lining thickness on both sides of the framework. \*\*Based on limiting deflection of L/240 at 200Pa.

## System Components

### Metal products



Donn UltraSTEEL Stud 102mm



Donn UltraSTEEL Track 102mm



Donn Corner Bead for all external corners on drywall.

### Board products



Gyproc MoistureResistant 15mm

### Finishing products



Gyproc RhinoBoard Sharp Point Screws 25mm



Gyproc RhinoGlide



SoundSeal



Gyproc Gypseal



Gyproc RhinoTape

**Note:** These are the components found in the GypWall MoistureResistant systems. Please refer to the specific guidelines for that system's specific components.



## GypWall MoistureResistant | 102/F60

Nominal thickness (excluding finishes): **132mm**

### Performance criteria



SANS 10177: Part 2: 60 minutes



SANS ISO 140-3:1995:

### Framework

Studs:	Donn UltraSTEEL™ Studs 102mm x 35mm at 600mm centres. In areas with tile finishes, reduce stud spacing to 400mm centres. Depending on the weight of the wall tile.
Floor track:	Donn UltraSTEEL™ Track 102mm x 25mm fixed with two lines of staggered fixings 50mm from each other and spaced at 600mm centres.
Head track:	Donn UltraSTEEL™ Track 102mm x 25mm fixed with two lines of staggered fixings 50mm from each other and spaced at 600mm centres. Adequate support shall be provided for the head track. Donn Deep Track 102mm x 50mm shall be used in areas subject to deflection.
Deflection allowance:	Shall be determined by the project structural engineer.

*Apply two continuous beads of SoundSeal between the building structure and the framework.*

### Lining

1 layer Gyproc MoistureResistant 15mm, sheet width 1200mm; fixed to both sides of the framework. All joints shall be staggered.  
Screws first lining layer: Gyproc RhinoBoard Sharp Point Screws 3.5mm diameter x 25mm at maximum 220mm centres.

### Finishing

#### Jointed Finishing:

Apply Gyproc RhinoTape to all joints and internal corners.  
Apply Donn Corner Bead embedded in Gyproc RhinoGlide plaster to all external corners.  
Cover Gyproc RhinoTape with two layers of Gyproc RhinoGlide.  
Paint using a good quality oil based plaster primer. Apply paint as required.

#### Tiling:

For improved vapour resistance, seal the surface using Gyproc Gypseal.  
All walls must be primed with 2 parts weber.prim Plaskey WB 250 mixed with 1 part weber.ad Key it WB 117.  
Apply to a thickness of 1,5-2mm using a builders blockbrush. Allow 24 hours to dry before tiling commences.  
Maximum tile weight shall be 20kg/m<sup>2</sup>. For heavier tiles contact the Saint-Gobain Technical Solutions Centre for guidance.  
Use weber.set Tile Adhesive mixed only with clean cold water. Apply to the surface to a minimum bed thickness of 3mm or 6mm.  
Use weber.grout mixed with weber.ad Bond it WB 183.

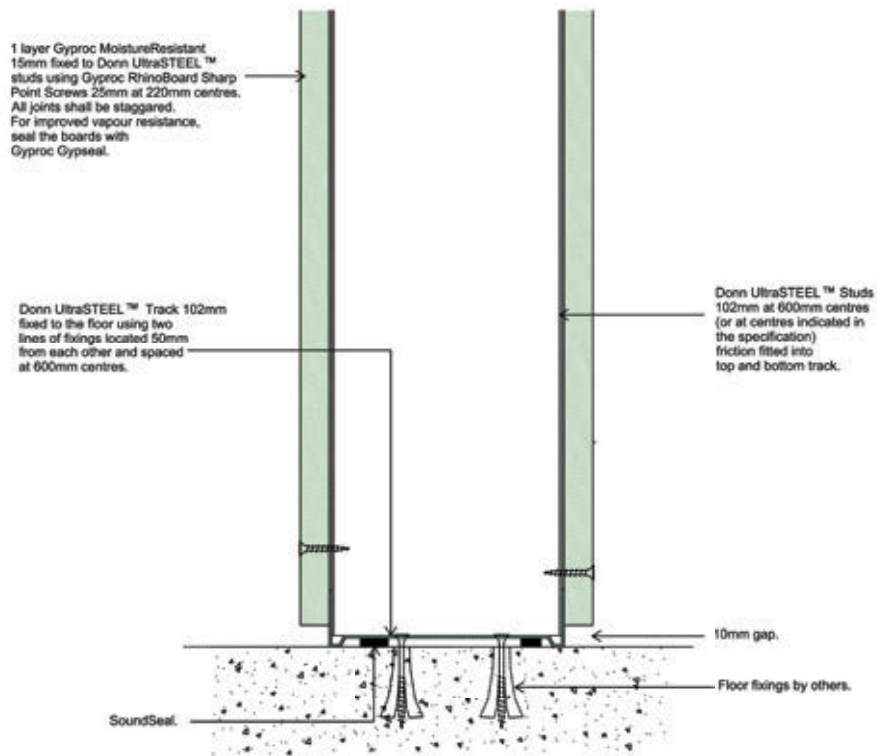
\*Weber shower kit is also available.

**Note:** The weight of wall tiles must be calculated in an appropriate detail designed by technical specifications to support design guidelines.

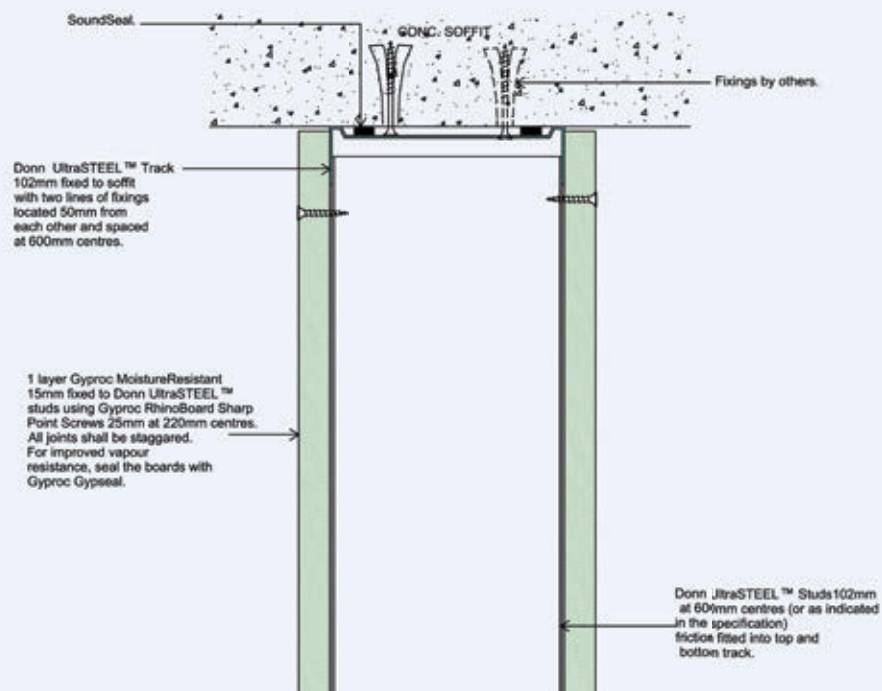
**NB** To be read with Drywall design guidelines and Drywall Finishings documents.

## GypWall MoistureResistant 102/F60 Illustration

### Base detail

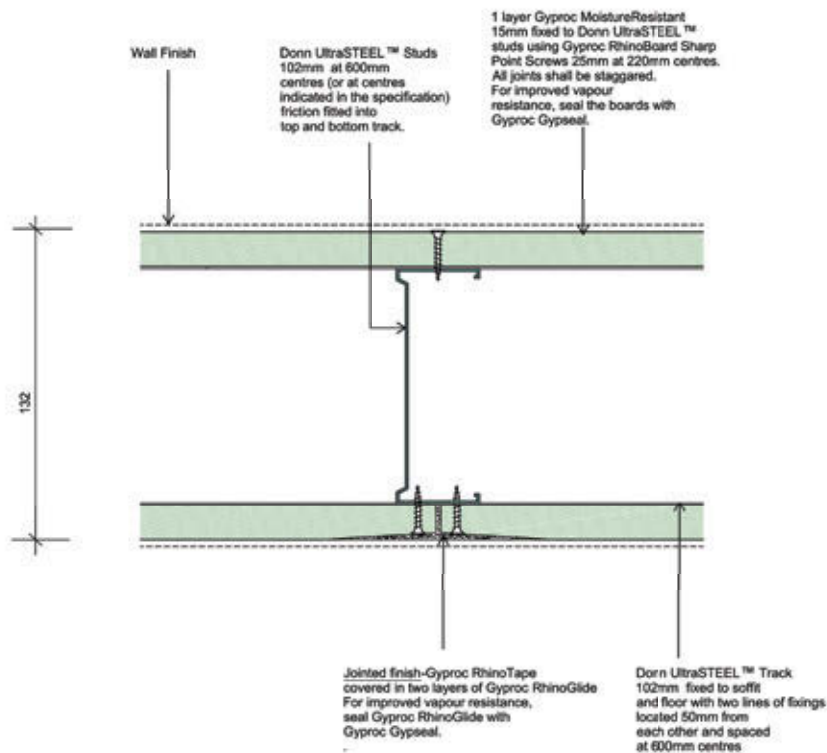


### Head detail

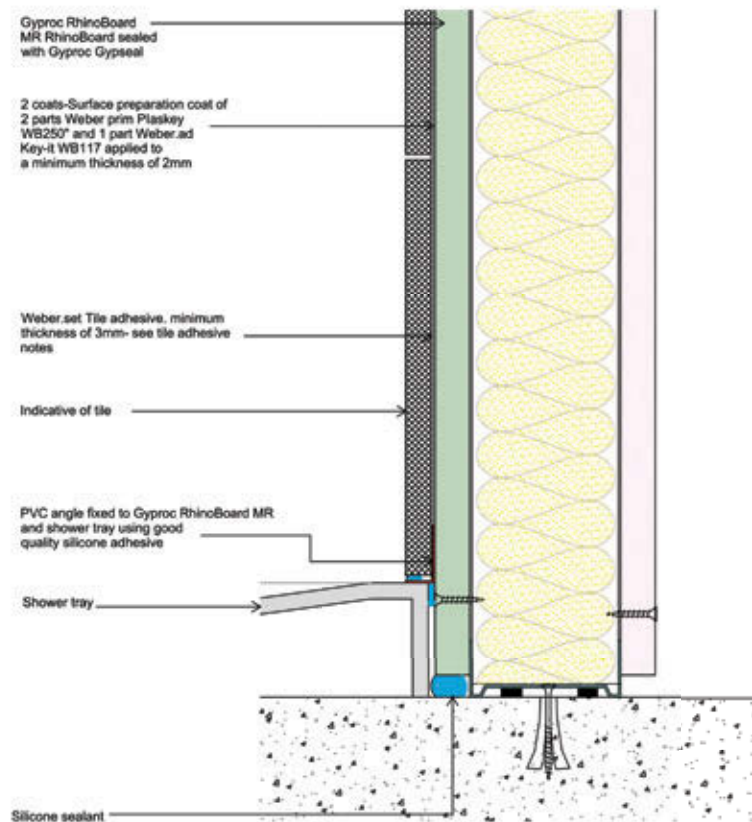


## GypWall MoistureResistant 102/F60 Illustration

Plan

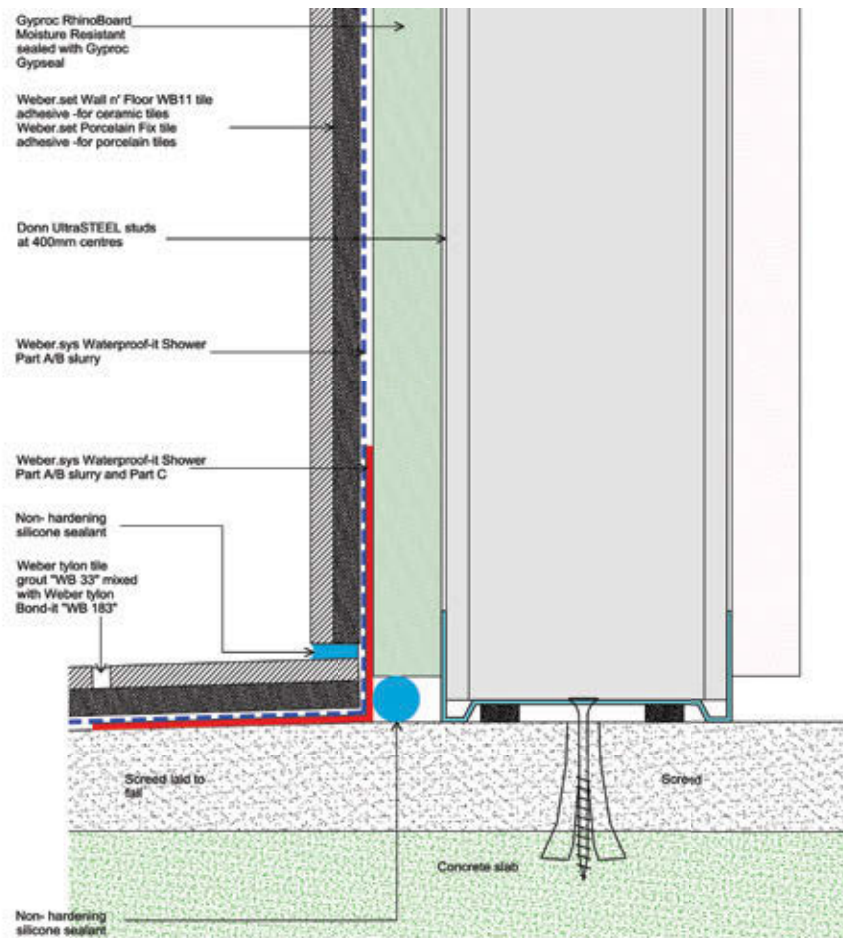


Shower detail with shower tray

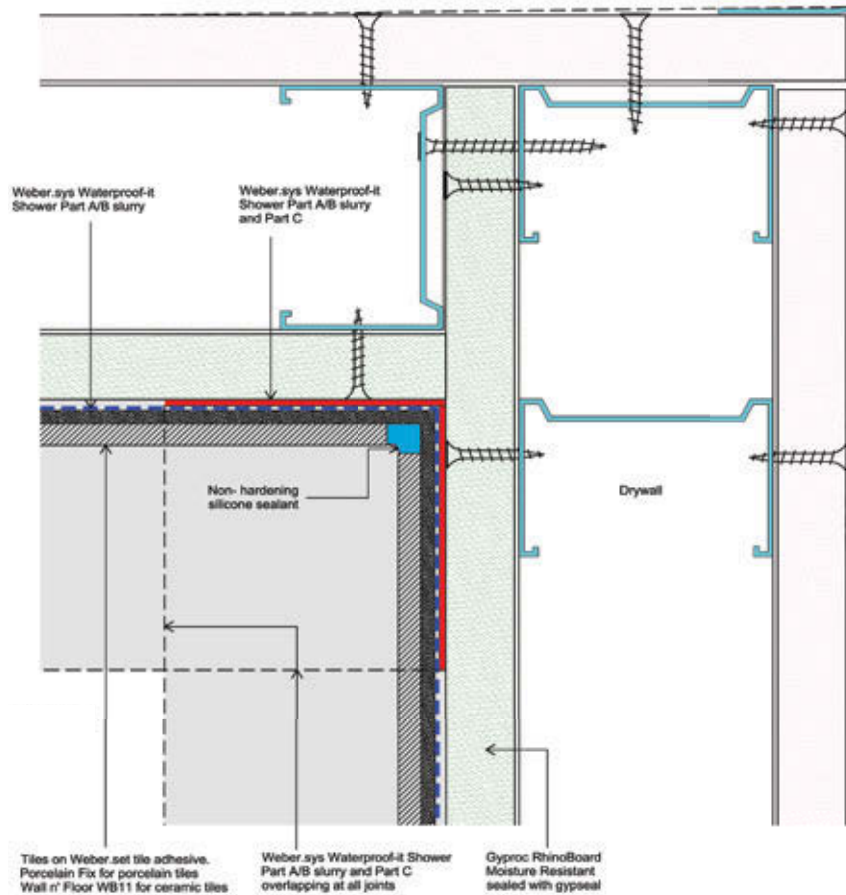




Shower base detail

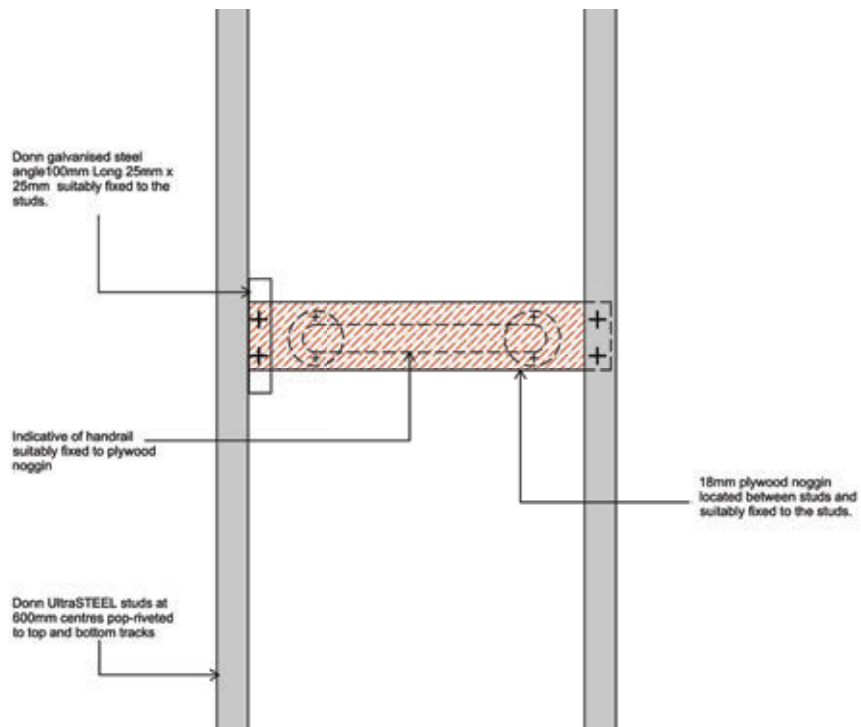


Shower corner detail

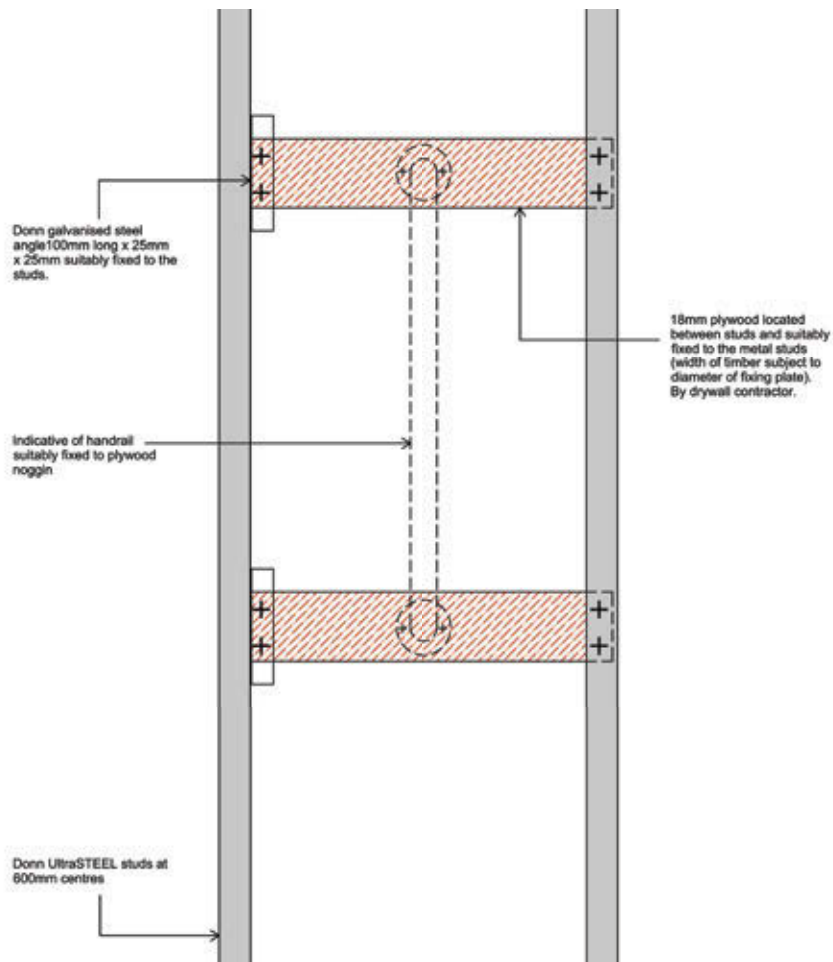


## Fixtures and fittings

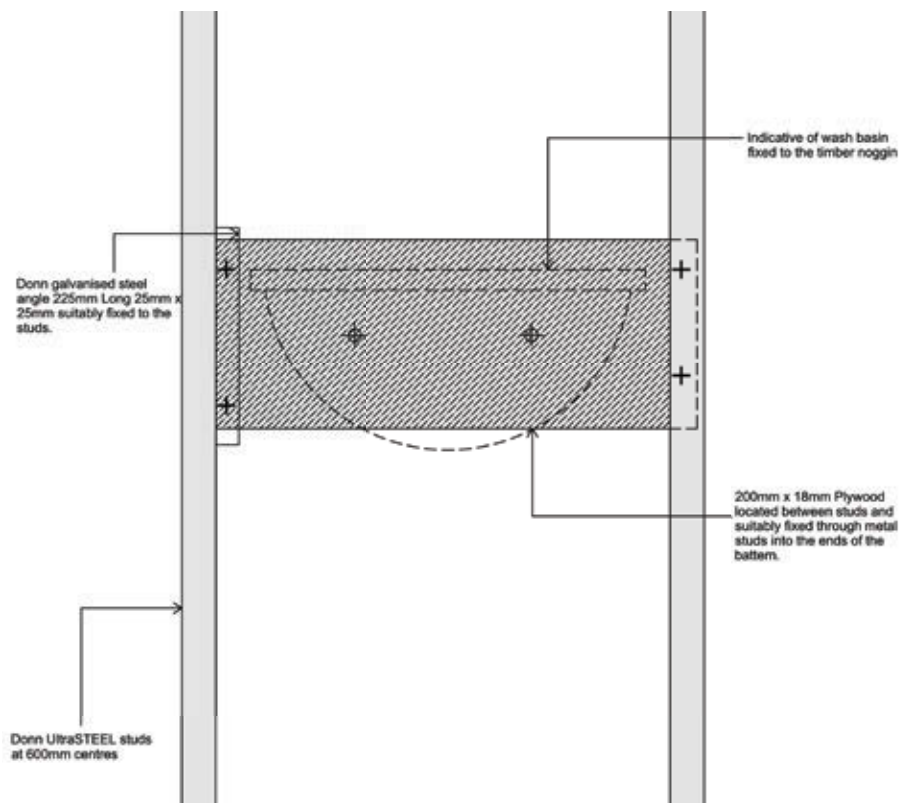
### Horizontal handrail fixing detail



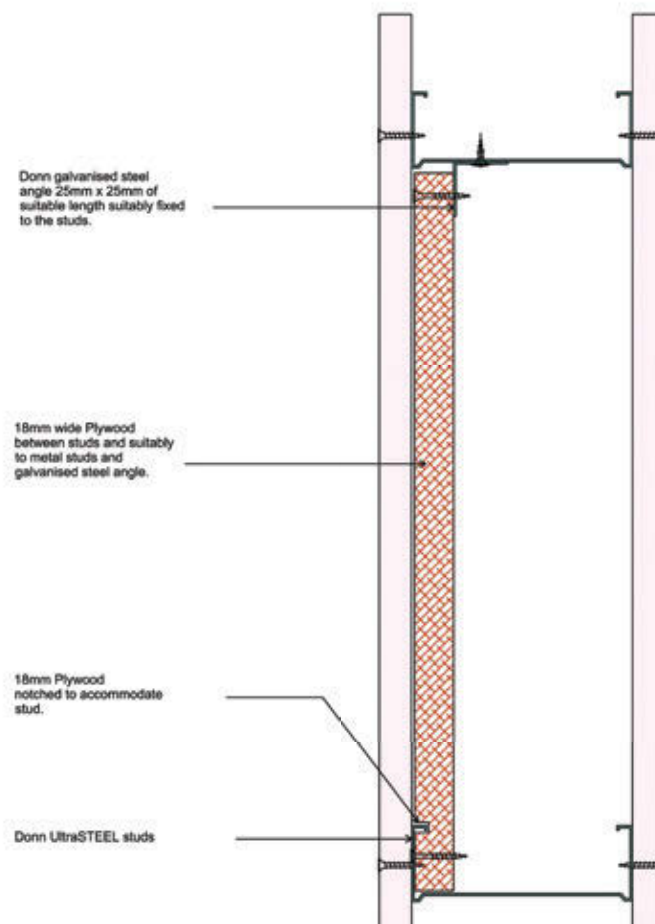
### Vertical handrail fixing detail



### Hand basin fixing detail

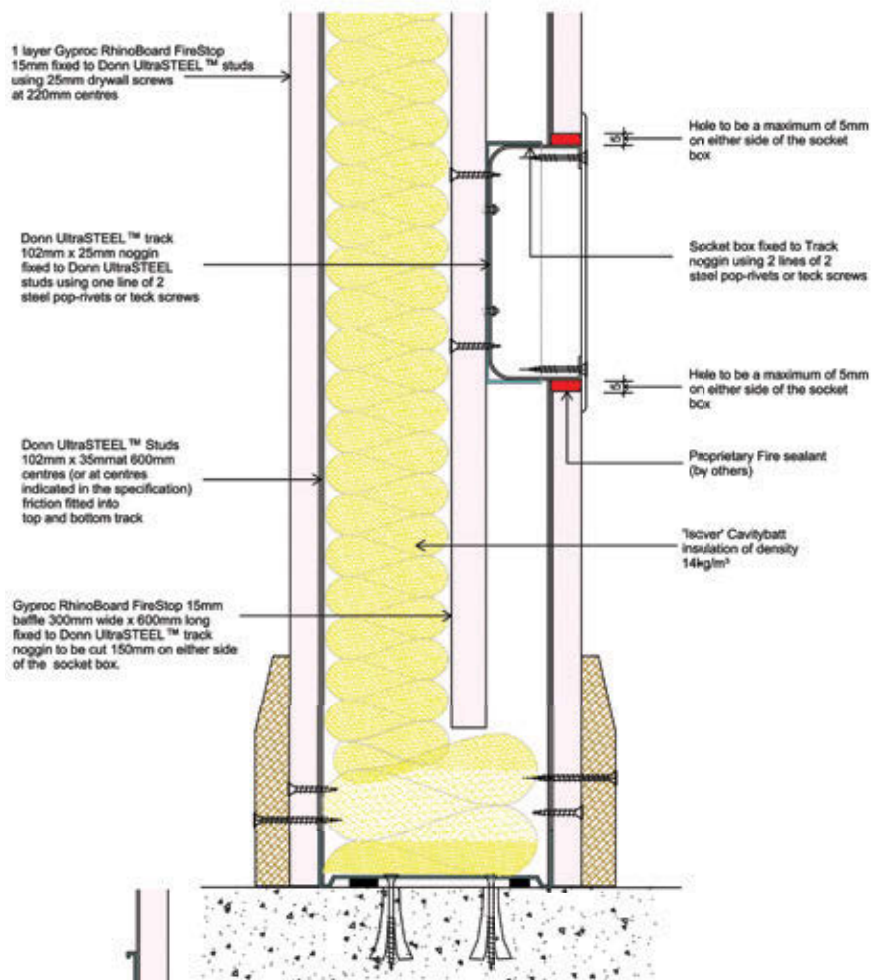


### Noggin fixing detail

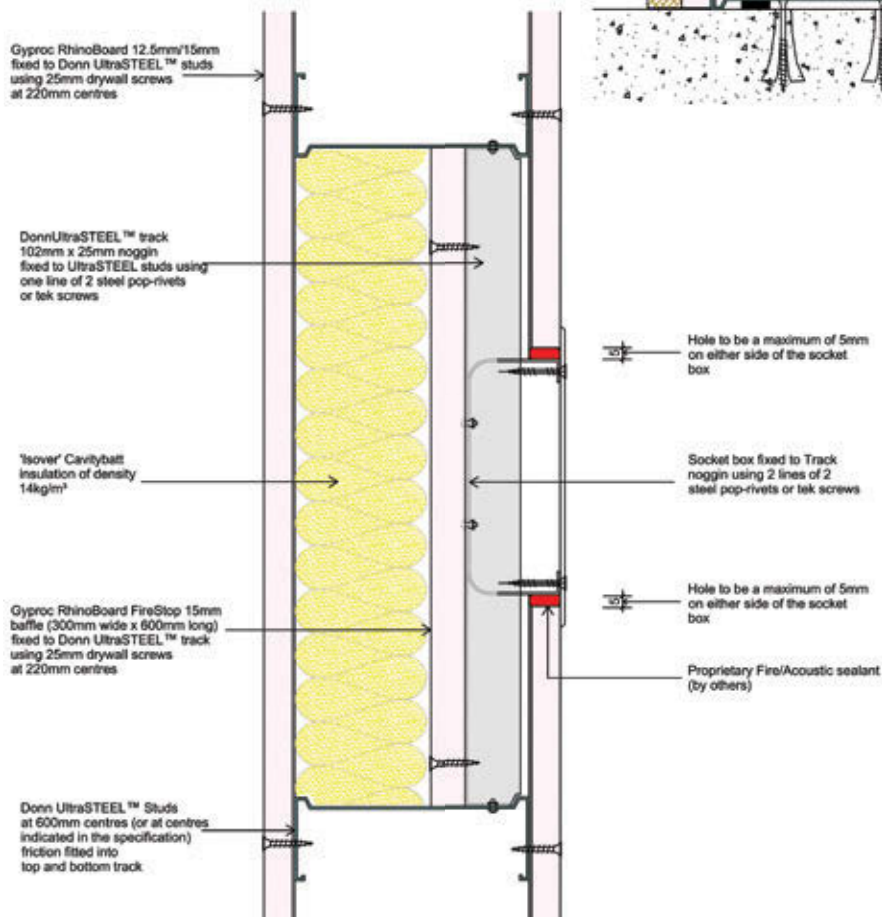


## Fixtures and fittings

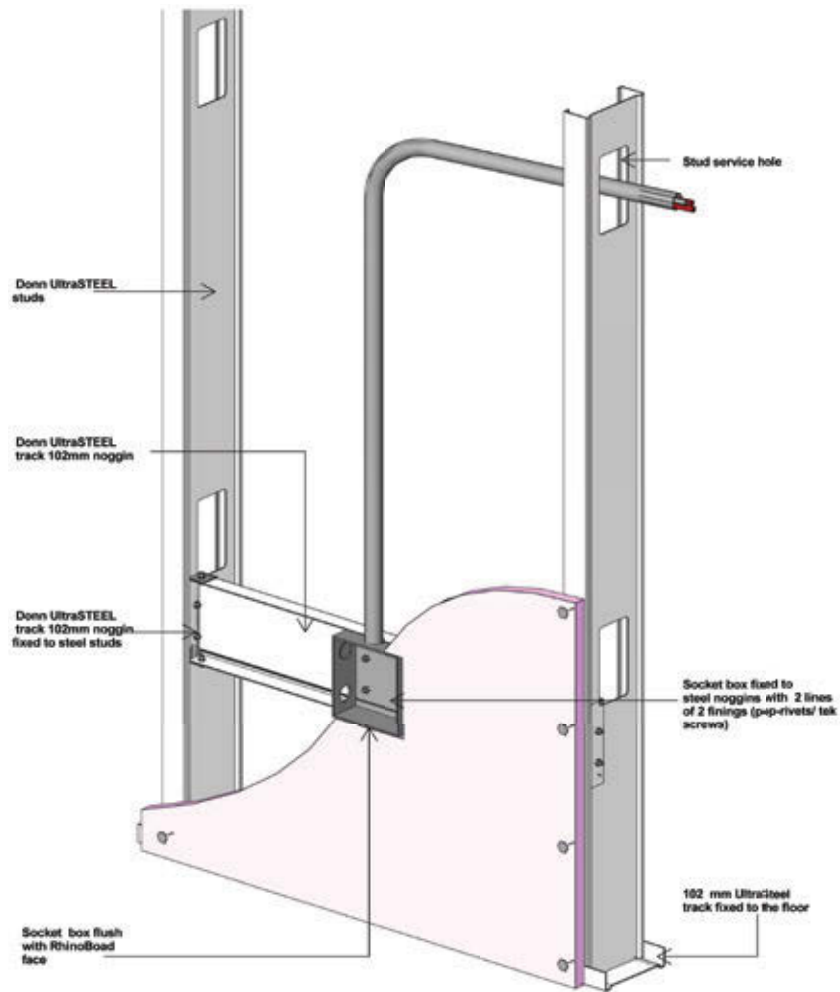
### Typical socket detail



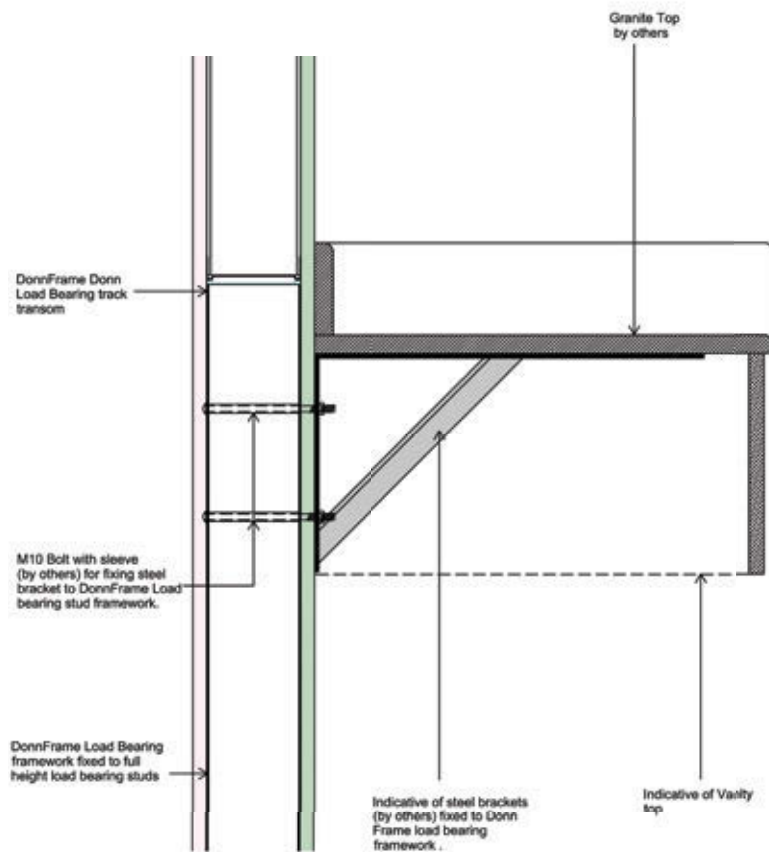
### Typical socket detail



### Socket detailing

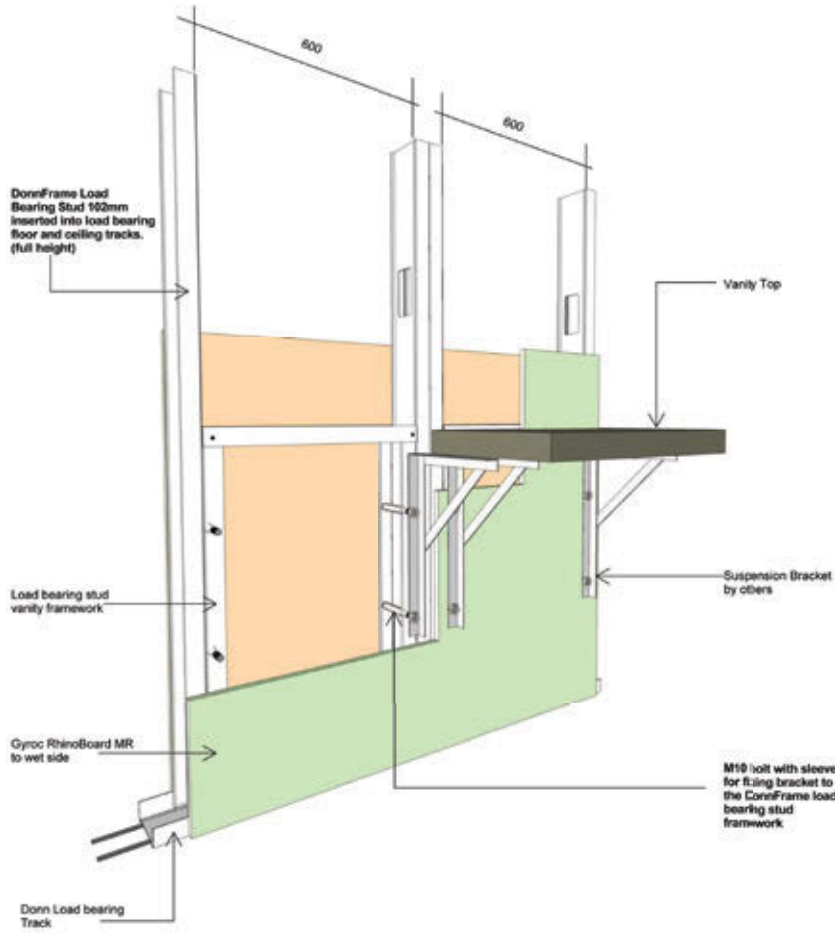


### Vanity top detail

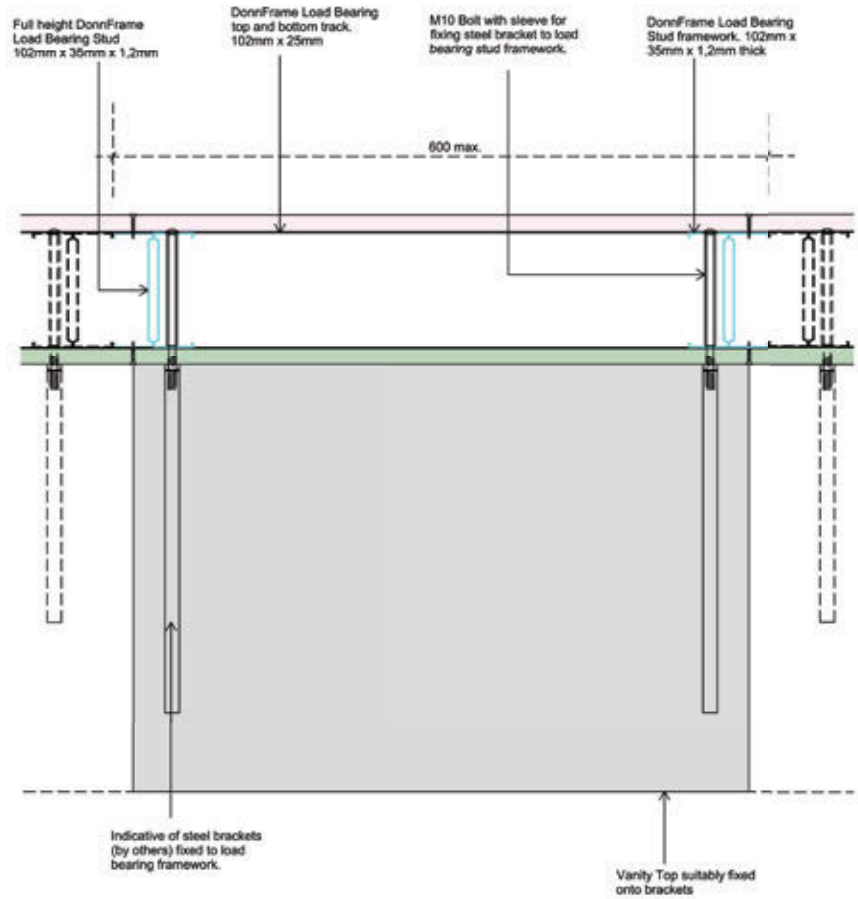


# Fixtures and fittings

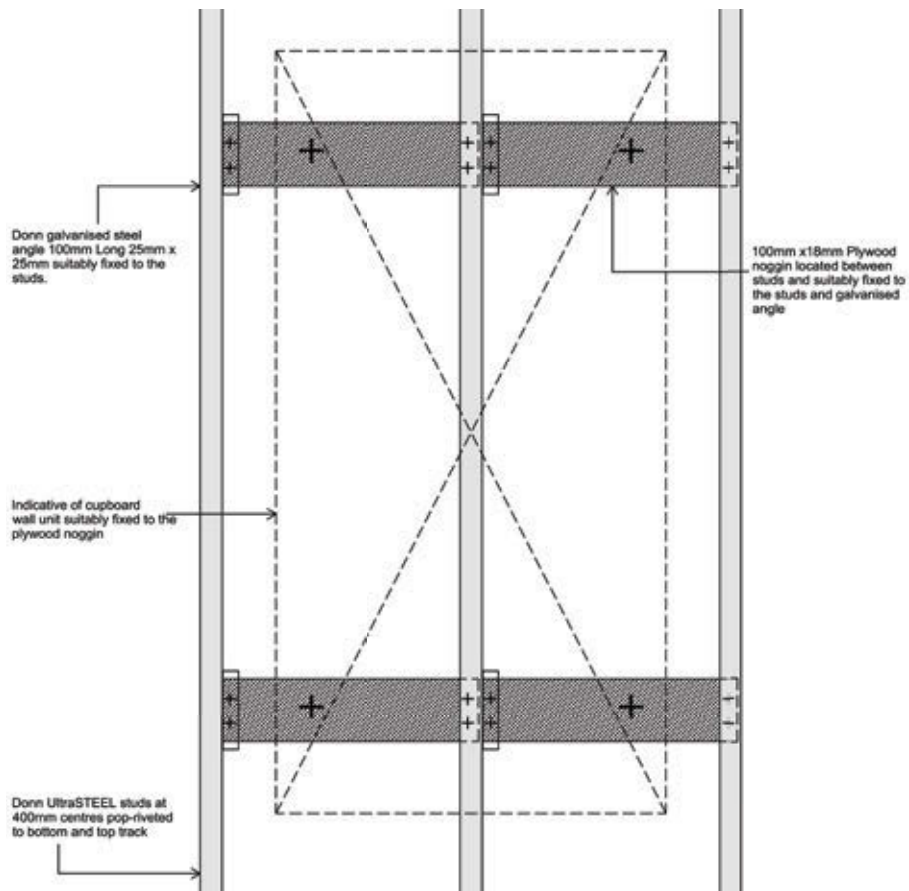
Vanity top detail



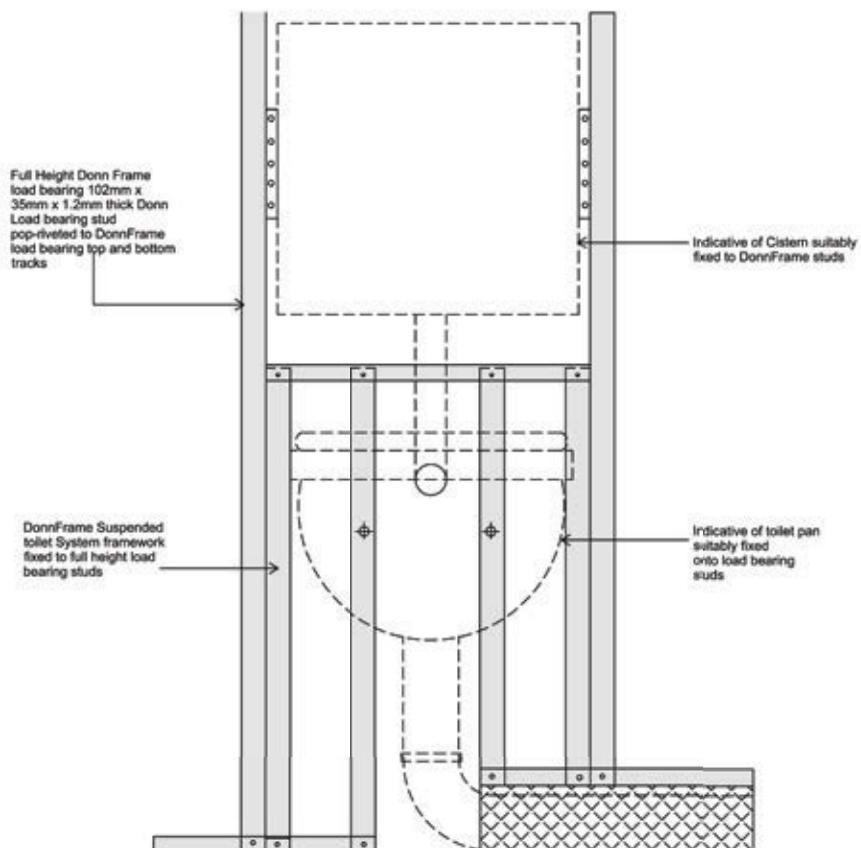
Vanity top detail



### Wall unit fixing detail

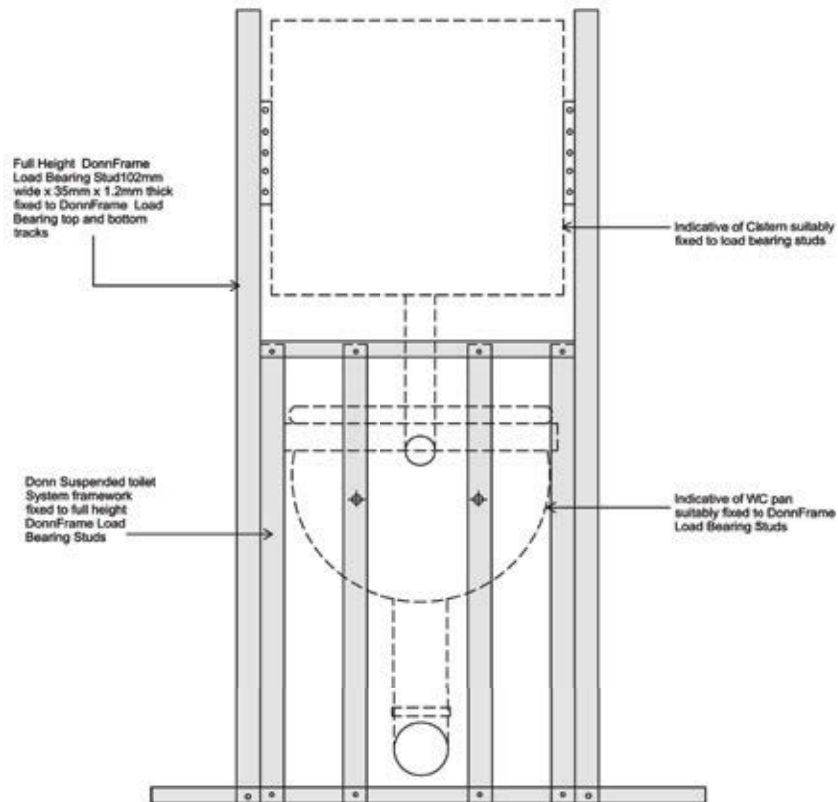


### Wall mounted WC with side outlet

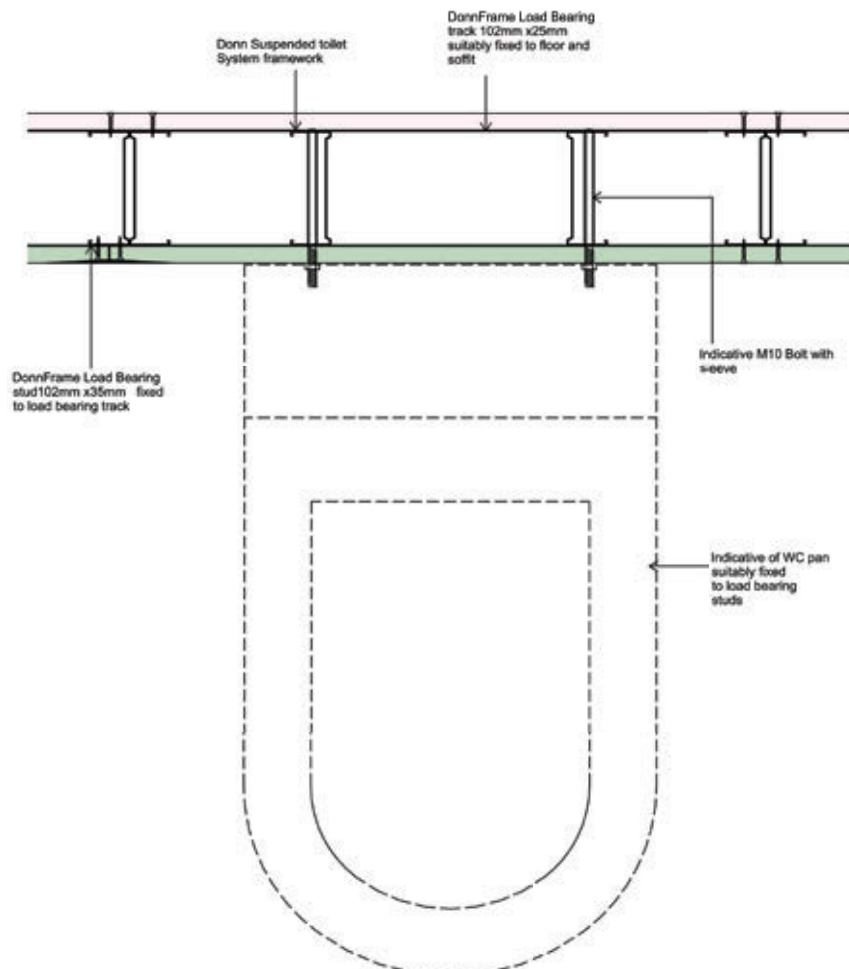


## Fixtures and fittings

### Wall mounted WC



### Wall mounted WC







## Gypwall MoistureResistant installation guide



1 Apply SoundSeal as a continuous application to the perimeter of the framework.



2 Determine and mark wall position and make allowance for openings. Fix Donn UltraSTEEL floor track at 600mm centres using suitable fixings.



3 Measure the wall height and cut stud to size. Install the stud into Donn UltraSTEEL floor track.



4 Twist Donn UltraSTEEL stud into place.



5 Ensure the stud is plumb and mark stud position.



6 Fix the Donn UltraSTEEL stud to the abutting wall at 600mm centres using suitable fixings.



7 Insert top Donn UltraSTEEL track into position.



8 Fasten the top Donn UltraSTEEL track at 600mm centres.



Insert studs at 600mm centres to a friction fit within the channel sections – this allows for adjustment during boarding. Position the studs so all face the same way.



Fasten RhinoBoard MoistureResistant 15mm to the framework using 25mm Gyproc RhinoBoard Sharp Point Screws spaced at 220mm centres.



After the boarding is complete, apply RhinoTape to all joints.



Apply RhinoGlide to the joints using a 150mm tapping knife.



Fill all screw heads and apply a second coat of RhinoGlide using a 300mm steel trowel.

## Saint-Gobain's SpecSure system warranty



Unique to Saint-Gobain Construction Products South Africa, the 10 year system warranty is designed to give you total confidence that the systems you have chosen will meet the most rigorous of building requirements.

All of our systems are developed using the highest quality components designed to work together, and are specifically developed to give you a lifetime of confidence.

SpecSure is more than just a performance warranty. It means that the Saint-Gobain Construction Products SA systems you specify:

- Have a guaranteed 10 year performance.
- Have the technical expertise and experience of the SA's leading construction products specialist behind it.
- Have been tested in accredited fire, acoustic and structural test laboratories.
- Have been site tested to demonstrate installation integrity and simplicity.
- Will be supported at every stage of the project by SA's leading on and off-site technical support personnel.
- Will perform to published parameters if installed in accordance to our specifications.
- Will be repaired or replaced by Saint-Gobain Construction Products South Africa in the unlikely event of system failure attributed to unsatisfactory product/system performance.
- Project Packs offer technical guidance and compliance to the building methodology prescribed which will ensure optimal system performance.

Customer contact centre:

**0860 27 28 29 | [www.gyproc.co.za](http://www.gyproc.co.za)**

