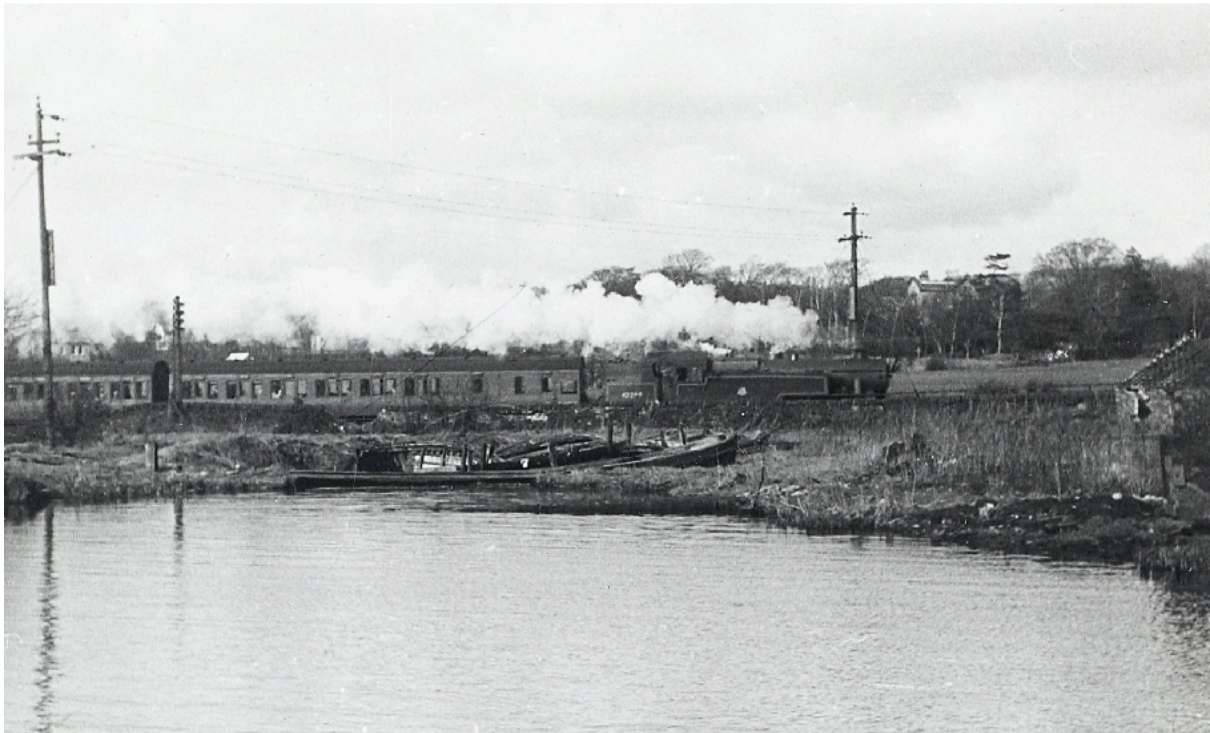


Parbold Dry Dock

About the Docks

Parbold Dock in Pictures - decline, resurrection and decline.

Parbold Dock - although the main boatyards ceased to operate in the 1930's this picture taken in the 1953 shows at least three boats in the dock. In the background is a Southport to Manchester train being pulled by LMS 42295 in British Rail Livery\



Picture from the same viewpoint in 2017



The basin was restored to a working dry dock in 1990 funded by a European Social Grant and Lancashire County Council as part of a training scheme which included the purchase of the 'Rose of Parbold' - after this restoration the Dock was used to fit out the Rose which was delivered to the site as a shell. The dock was owned by British Waterways and for a period maintained by the 'Rose of Parbold' charity until British Waterways following Health and Safety concerns and leakage of water from the canal into the brook retook responsibility for the dock - a clay bund was constructed on the canal side of the stop planks to minimise leakage into the dock. No further maintenance took place over the following 20 years, Nature took its course and the basin became overgrown with trees and other vegetation.



Dock Prior to Flooding 1990



Dock in Water 1990

Pictures courtesy of 'Rose of Parbold'



Dock at Parbold - As it looked in 1994



Dock at Parbold looking towards the 'Rose of Parbold' on the left 1994



Dock at Parbold looking towards the 'Rose of Parbold' on the left April 2017



Dock at Parbold looking towards the 'Rose of Parbold' on the right 2017



Dock at Parbold 2017 - Barge 'Rose of Parbold' on the left hand side