



EUROPEAN DISTRIBUTION **PROFESSIONAL** SOLUTIONS FOR INDUSTRY

EUROXWAY SRL (s.u.) Office: Viale della Repubblica 7/C - 42024 Castelnovo di Sotto (RE) Italy

Part. IVA - Cod. Fiscale (VAT/TVA): IT 01546560358 - Office Phone: +39 0522 682548 - Mail: [admin@euroxway.srl](mailto:admin@euroxway.srl)

Data, and specifications in this catalog are subject to change without notice

CATALOG BUILT: 01/2020



**EUROXWAY SRL** WAS BORN AS A COMPANY SPECIALIZED IN SELLING “*EQUIPMENT CUSTOMIZED FOR CREMATORIA IN EUROPE*”, RESPECTING ALL THE EXISTING REGULATIONS, SUCH AS LOADING COFFIN AUTOLOADER, TROLLEY TRANSPORT, ASHES PROCESSOR, RADIO-CONTROLLED SYSTEM DESIGNED FOR THE ASHES TRACEABILITY OF THE DECEASED IN THE CREMATORIUM AND X-RAY SCANNERS. DISTRIBUTED BY **EUROXWAY SRL** THE FULL AUTOMATICS AUTOLOADER OF SMALL DIMENSIONS THAT LOADS THE COFFINS IN CREMATORIUM, REALIZED ALL THE NEEDS OF EACH CUSTOMER.

#### **EUROXWAY CAN PROVIDE SERVICES BASED ON CUSTOMER'S NEEDS**

TO COMPLETE SERVICES OFFERED TO OUR CLIENTS, WE ALSO MADE, ON REQUEST, TECHNICAL BASIC TRAINING FOR USING OUR EQUIPMENT RESPECTFULLY, FRONT TO FAMILIES DURING FUNERALS.

- **EXW SECURCEN®** - IS A PATENTED RADIO-CONTROLLED SYSTEM, DESIGNED FOR THE ASHES TRACEABILITY OF THE DECEASED, IN THE CREMATORIUM THROUGH RFID TECHNOLOGY.
- **EXW AUTOLOADER** - FULL AUTOMATICS AUTOLOADER OF SMALL DIMENSIONS THAT LOADS THE COFFINS IN CREMATORIUM FOR HUMANS, REALIZED ALL THE NEEDS OF EACH CUSTOMER.
- **EXW TROLLEY** - TROLLEY FOR THE TRANSPORT OF COFFINS INSIDE OF CREMATORIUM BUILT IN FULL COMPLIANCE WITH REGULATIONS C.E..
- **EXW PRO-CEN** - ASHES/METALS AUTOMATIC SEPARATION PROCESSORS FOR HUMANS REST OF CREMATIONS.
- **EXW X-RAY SCANNER** - SCANNER FOR CREMATORIA IS USED FOR THE INSPECTION IN THE SEALED AND CLOSED COFFIN, HELPS SEE THE PRESENCE OF DANGEROUS OBJECTS, INSIDE THE COFFIN ITSELF.

THOSE ARE THE PRODUCTS WE SELL IN EUROPE AFTER YEARS OF EXPERIENCE IN THIS FIELD.

OUR PRODUCTS ARE USED FROM YEAR 2007 IN MORE 75 CREMATORIUMS AROUND FRANCE, ENGLAND, BELGIUM, ITALY, POLAND, PORTUGAL AND NORDIC COUNTRIES.

BOTH PRIVATE AND PUBLIC CLIENTS STATE TO BE MORE THAN SATISFIED. WE SELL, INSTALL AND PROVIDE ASSISTANCE WITH EXPERIENCED STAFF.

# SECURCEN®

## TRACEABILITY BY RFID TECHNOLOGY

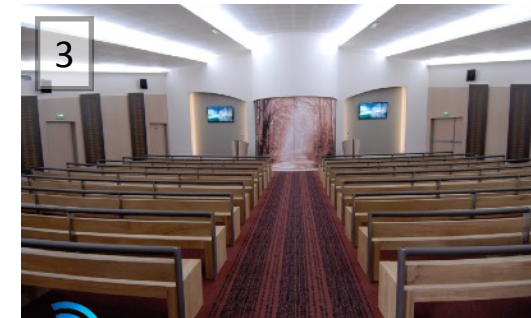
**SECURCEN® (PATENTED) IS A RADIO-CONTROLLED SYSTEM BY RFID TECHNOLOGY, DESIGNED FOR THE ASHES TRACEABILITY, OF THE DECEASED, IN THE CREMATORIUM. IMPLEMENT, THROUGHOUT THE PROCESS OF CREMATION, A MONITORING OF SAFETY PROCEDURES FOR ACCEPTANCE OF THE DECEASED, THE CREMATION PROCESS, AND PREPARATION ASHES IN THE URN. SECURCEN® RESPONDS EFFECTIVELY TO THE NEEDS OF FAMILIES ON THE CERTAINTY TO GET BACK THE ASHES OF THEIR RELATIVES, AFTER THE CREMATION PROCESS.**



1  
DATA LOGGING OF DECEASED  
TO SYSTEM SECURCEN®



2  
DECEASED CREMATORIUM CHECK-IN



3  
IDENTIFICATION ROOM OF CEREMONIES AND  
EVERY OTHER ROOM OF CREMATORIUM



4  
CONTROL OF ALL TECHNICAL EQUIPMENT



5  
PROCESSING OF ASHES



6  
URN DELIVERED TO THE FAMILY



7  
PREPARATION OF FINAL DOCUMENTATION

## THE AUTOLOADERS

THE AUTOLOADERS CAN BE MATCHED TO EVERY KIND OF OVEN

**FULL AUTOMATIC AUTOLOADER** INTRODUCE COFFIN'S IN THE OVEN.

REALIZED TO WORK FOR EVERY HEIGHTS OF THE OVEN, BASED ON CUSTOMER'S NEEDS. BOTH ELECTRIC AND MANUAL LOADING OF THE COFFIN (*IN FULL RESPECT OF EUROPEAN REGULATIONS*)  
**LATERAL MOVEMENT OVER WHEELS OR RAILS. COMMANDS ARE ON THE AUTOLOADER OR THROUGH REMOTE CONTROL (RADIO-LOADER)**

### SOME OF THE EUROXWAY AUTOLOADER'S ADVANTAGES:

- SMALLER, EASY TO USE, CHARGING COFFIN FAST, WORKS IN FULL-AUTOMATIC, SEMI-AUTOMATIC AND MANUAL MODE, SUITABLE FOR EVERY KIND OF OVENS.
- ADAPTABLE TO EVERY KIND OF OVEN, AS THEY ARE REALIZED FOLLOWING CUSTOMER'S NEEDS
- SMALL DIMENSIONS INTRODUCER THAT GUARANTEES COMFORT EVEN IN NARROW SPACES
- DIFFERENT WORKING LEVELS FROM +00MM UP TO +1200MM
- ALL OPERATING LEVELS OF AUTOLOADER ARE REALIZED ON REQUEST BY CUSTOMERS
- REALIZE A CORRECT INTRODUCTION OF THE COFFIN, IN ORDER TO AVOID DANGEROUS SITUATION FOR THE STAFF AND FOR THE OVEN ITSELF.
- POSSIBILITY OF LOADING LARGE SIZE COFFINS OR COFFINS WITH FEET WITHOUT THE NECESSITY OF PLINTHS BUILT IN THE INNER SOLE OF THE OVEN
- MAXIMUM WEIGHT OF CASKET LOADED = 300 KG
- WEIGHT OF CASKET CALCULATED BY SYSTEM MEASURING, BEFORE CREMATIONS, FOR DETERMINING THE CHOICE OF THE TYPE OF CREMATION
- SPEED - INTRODUCING THE COFFIN IN THE OVEN, IN FULL RESPECT OF EUROPEANS REGULATIONS (*LOWER THAN 20SEC*)
- BRIDGE ROTATION SYSTEM: 180° FREE-ROTATION WITH MECHANICAL SYSTEM BLOCK AT +90°/ 0°/ -90° (*AFTER TECHNICAL TEST*)
- EASY TO INSTALL, USE AND MAINTAIN
- SIMPLE CONTROL AND COMMAND SYSTEM (*ON THE AUTOLOADER, THROUGH REMOTE CONTROL OR ON THE OVEN CONSOLE*)
- FIXED OR MOVABLE POSITION AUTOLOADER (*IN FRONT OF EVERY WORKING OVEN - MOBILITY OVER WHEELS AND ADJUSTABLE + - 30MM*)
- MOVABLE POSITION AUTOLOADER EXTREMELY COMFORTABLE FOR THE OPERATOR (*LOADING, UNLOADING, REMOTE CONTROL, ETC.*)
- PROGRAMMABLE MAINTENANCE WITH MULTI ANNUAL CONTRACTS OF ASSISTANCE (*WITH AUTHORIZED EUROXWAY STAFF*).
- AUTOLOADER WORKS WITH AVERAGE BATTERIES OR ELECTRICITY GRID FROM 110V TO 240V
- IN CASE OF BLACKOUT OF ELECTRICITY POWER, THE MACHINE HAS A MANUAL INTRODUCTION SYSTEM IN THE FULL RESPECTING OF EUROPEAN RULES.



**EXW AUTOLOADER 004A - PUSH LATERAL FOR CHANGE POSITION OVER RAIL OR LOCKABLE WHEELS****CUSTOMER'S OPTIONAL CHOICES:**

- LATERAL TRANSFER OVER RAIL OR LOCKABLE WHEELS
- ELECTRIC CURRENT ALIMENTATION (110V-240V)
- RECHARGEABLE BATTERIES ALIMENTATION (24V 80AH (20H)) HIGH FREQUENCY CHARGER
- COMMAND ON THE MACHINE ONLY
- COMMAND ON THE MACHINE AND THROUGH REMOTE CONTROL
- COMMAND ON THE OVEN, ON SEPARATE PLC OR TABLET
- HEIGHT CHOSEN BY THE CUSTOMER, DEPENDING ON THE OVEN
- ADDITIONAL POSSIBILITY OF CHANGING HEIGHT ( + - 30mm)
- SYSTEM MEASURING WEIGHT OF CASKET, BEFORE CREMATION

**STANDARD EQUIPMENT:**

- MAXIMUM WEIGHT 300KG
- BRIDGE 630mm LARGE- MAXIMUM DIMENSIONS 970mm X 2'260mm
- OVEN PENETRATION: 1'400mm (ADDITIONAL + 30mm)
- STOP SECURITY BUTTON
- SECURITY KEY (ON/OFF)
- ACCELERATION AND SPEED REGULATION FOR THE COFFIN TO BE INTRODUCED
- HANDLES FOR LATERAL AND POSTERIOR MOVEMENTS
- MANUAL MECHANISM FOR INTRODUCING THE COFFIN IN CASE OF BLACKOUT
- HANDBOOK PROVIDED IN CUSTOMER'S NATIVE LANGUAGE
- CEE DECLARATION OF CONFORMITY

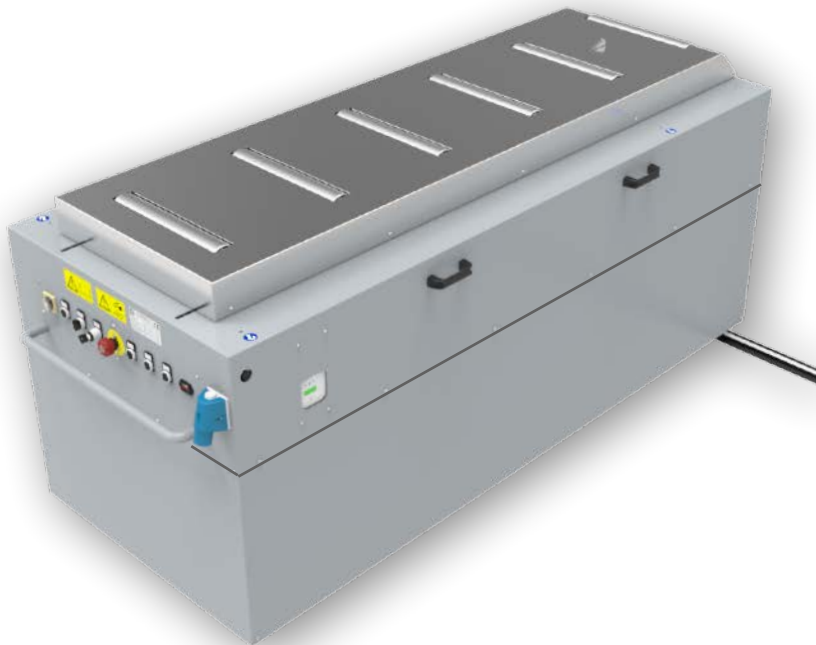


**EXW AUTOLOADER 003E (LOADING FOR TWO OR PLUS OVEN HEIGHTS IN THE SAME CREMATORIUM)****CUSTOMER'S OPTIONAL CHOICES:**

- LATERAL TRANSFER OVER RAIL OR LOCKABLE WHEELS
- ELECTRIC CURRENT ALIMENTATION (110V-240V)
- RECHARGEABLE BATTERIES ALIMENTATION (24V 80AH (20H)) HIGH FREQUENCY CHARGER
- COMMAND ON THE MACHINE ONLY
- COMMAND ON THE MACHINE AND THROUGH REMOTE CONTROL
- COMMAND ON THE OVEN, ON SEPARATE PLC OR TABLET
- HEIGHT CHOSEN BY THE CUSTOMER DEPENDING ON THE OVEN
- ADDITIONAL POSSIBILITY OF CHANGING HEIGHT ( + - 30mm)
- SYSTEM MEASURING WEIGHT OF CASKET, BEFORE CREMATION

**STANDARD EQUIPMENT:**

- MAXIMUM WEIGHT 300KG
- BRIDGE 630mm LARGE- MAXIMUM DIMENSIONS 970mm X 2'260mm
- OVEN PENETRATION: 1'400mm (ADDITIONAL + 30mm)
- STOP SECURITY BUTTON
- SECURITY KEY (ON/OFF)
- ACCELERATION AND SPEED REGULATION FOR THE COFFIN TO BE INTRODUCED
- HANDLES FOR LATERAL AND POSTERIOR MOVEMENTS
- MANUAL MECHANISM FOR INTRODUCING THE COFFIN IN CASE OF BLACKOUT
- HANDBOOK PROVIDED IN CUSTOMER'S NATIVE LANGUAGE
- CEE DECLARATION OF CONFORMITY



**EXW AUTOLOADER 003E-02 (LOADING FOR TWO OR PLUS OVEN HEIGHTS IN THE SAME CREMATORIUM)****CUSTOMER'S OPTIONAL CHOICES:**

- LATERAL TRANSFER OVER RAIL OR LOCKABLE WHEELS
- ELECTRIC CURRENT ALIMENTATION (110V-240V)
- RECHARGEABLE BATTERIES ALIMENTATION (24V 80AH (20H)) HIGH FREQUENCY CHARGER
- COMMAND ON THE MACHINE ONLY
- COMMAND ON THE MACHINE AND THROUGH REMOTE CONTROL
- COMMAND ON THE OVEN, ON SEPARATE PLC OR TABLET
- HEIGHT CHOSEN BY THE CUSTOMER DEPENDING TO THE OVEN
- ADDITIONAL POSSIBILITY OF CHANGING HEIGHT ( + - 30mm)
- SYSTEM OF WEIGHT MEASUREMENT OF THE COFFIN, BEFORE CREMATION

**STANDARD EQUIPMENT:**

- MAXIMUM WEIGHT 300KG
- BRIDGE 630mm LARGE - MAXIMUM DIMENSIONS 1'030mm X 2'350mm
- OVEN PENETRATION: 1'400mm (ADDITIONAL + 30mm)
- SECURITY "STOP" BUTTON
- SECURITY KEY (ON/OFF)
- ACCELERATION AND SPEED REGULATION FOR THE COFFIN THAT HAS TO BE INTRODUCED
- HANDLES FOR LATERAL AND POSTERIOR MOVEMENTS
- MANUAL MECHANISM FOR INTRODUCING THE COFFIN IN CASE OF BLACKOUT
- HANDBOOK PROVIDED IN CUSTOMER'S NATIVE LANGUAGE
- CEE DECLARATION OF CONFORMITY



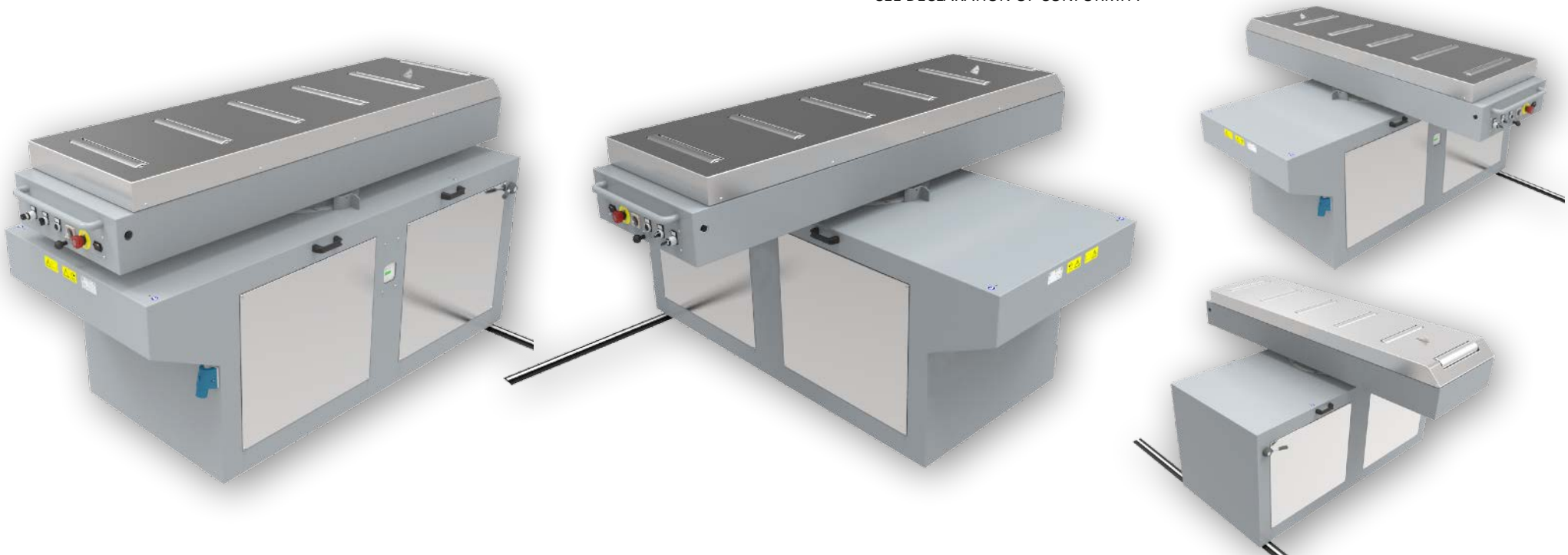
### EXW AUTOLOADER 005R - 180° ROTATING LOADING BRIDGE (+90° / 0° / -90°)

#### CUSTOMER'S OPTIONAL CHOICES:

- LATERAL TRANSFER OVER RAIL OR LOCKABLE WHEELS
- 180° BRIDGE ROTATION (+90° / 0° / -90°)
- ELECTRIC CURRENT ALIMENTATION (110V-240V)
- RECHARGEABLE BATTERIES ALIMENTATION (24V 80AH (20H)) HIGH FREQUENCY CHARGER
- COMMAND ON THE MACHINE ONLY
- COMMAND ON THE MACHINE AND THROUGH REMOTE CONTROL
- COMMAND ON THE OVEN, ON SEPARATE PLC OR TABLET
- HEIGHT CHOSEN BY THE CUSTOMER, DEPENDING ON THE OVEN
- ADDITIONAL POSSIBILITY OF CHANGING HEIGHT ( + - 30mm)
- SYSTEM MEASURING WEIGHT OF CASKET, BEFORE CREMATION

#### STANDARD EQUIPMENT:

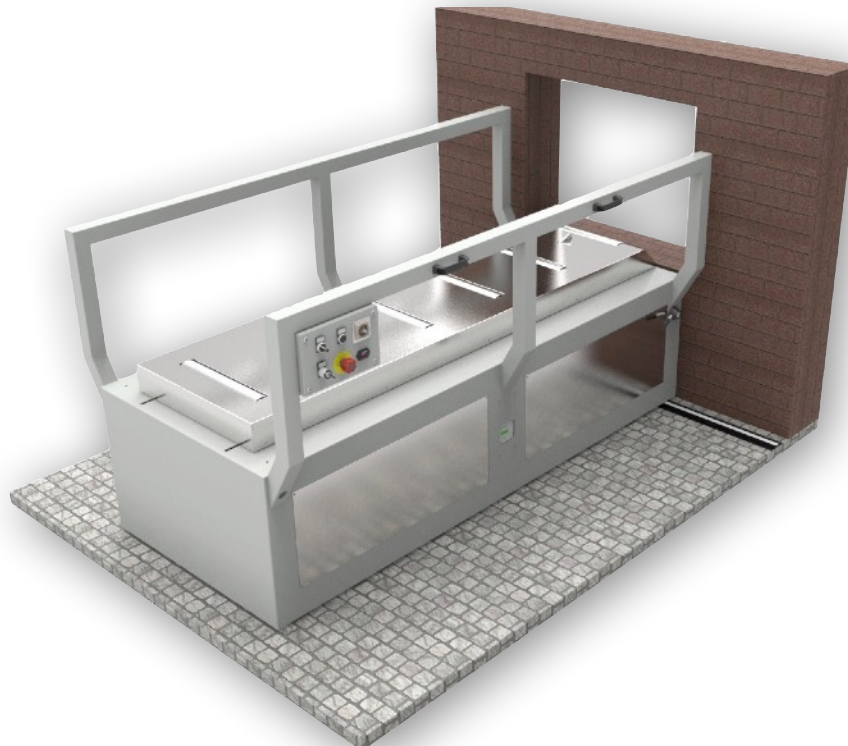
- MAXIMUM WEIGHT 300KG
- BRIDGE 630mm LARGE- MAXIMUM DIMENSIONS 1'030mm X 2190mm
- OVEN PENETRATION: 1'400mm (ADDITIONAL + 30mm)
- STOP SECURITY BUTTON
- SECURITY KEY (ON/OFF)
- ACCELERATION AND SPEED REGULATION FOR THE COFFIN TO BE INTRODUCED
- HANDLES FOR LATERAL MOVEMENTS
- HANDLES FOR BRIDGE LATERAL MOVEMENTS
- MANUAL MECHANISM FOR INTRODUCING THE COFFIN IN CASE OF BLACKOUT
- HANDBOOK PROVIDED IN CUSTOMER'S NATIVE LANGUAGE
- CEE DECLARATION OF CONFORMITY



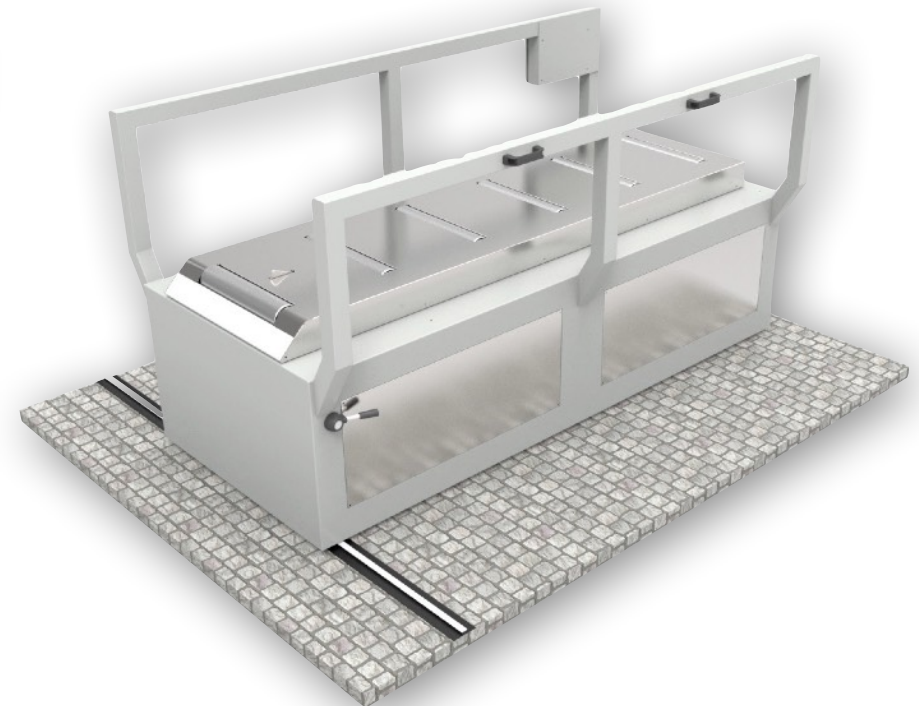


**EXW AUTOLOADER 006B WITH LATERAL PROTECTION****CUSTOMER'S OPTIONAL CHOICES:**

- LINEAR TRANSFER OVER RAIL WITH MANUAL TRACTION
- ELECTRIC CURRENT ALIMENTATION (110V-240V)
- LATERAL PROTECTION
- RECHARGEABLE BATTERIES ALIMENTATION (24V 80AH (20H)) HIGH FREQUENCY CHARGER
- COMMAND ON THE MACHINE
- COMMAND ON THE MACHINE AND THROUGH REMOTE CONTROL
- COMMAND ON THE OVEN, ON SEPARATE PLC OR TABLET
- HEIGHT CHOSEN BY THE CUSTOMER DEPENDING ON THE OVEN
- ADDITIONAL POSSIBILITY OF CHANGING HEIGHT ( + - 30mm)

**STANDARD EQUIPMENT:**

- MAXIMUM WEIGHT 300KG
- BRIDGE 630mm LARGE- MAXIMUM DIMENSIONS 1'200mm X 2190mm
- OVEN PENETRATION: 1'400mm (ADDITIONAL + 30mm)
- STOP SECURITY BUTTON
- SECURITY KEY (ON/OFF)
- ACCELERATION AND SPEED REGULATION FOR THE COFFIN TO BE INTRODUCED
- HANDLES FOR LATERAL MOVEMENTS
- MANUAL MECHANISM FOR INTRODUCING THE COFFIN IN CASE OF BLACKOUT
- HANDBOOK PROVIDED IN CUSTOMER'S NATIVE LANGUAGE
- CEE DECLARATION OF CONFORMITY



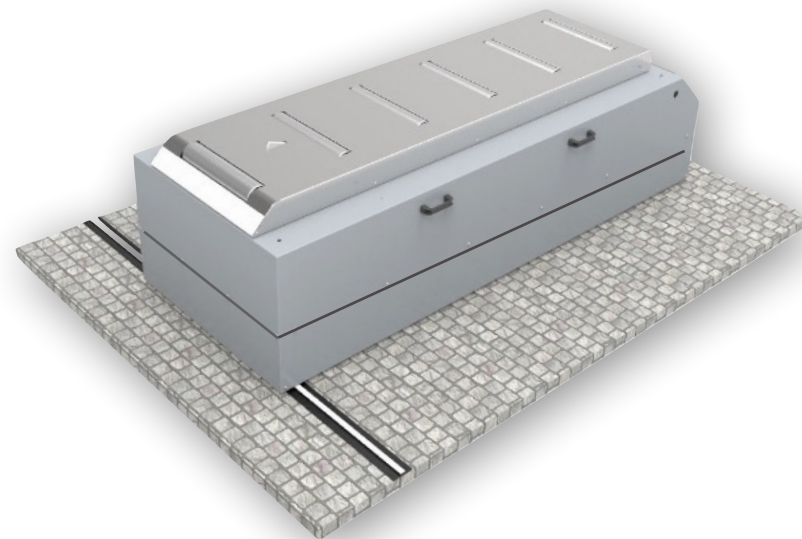
### EXW AUTOLOADER 007E (LOADING FOR TWO OR PLUS OVENS' HEIGHT IN THE SAME CREMATORIUM)

#### CUSTOMER'S OPTIONAL CHOICES:

- LINEAR TRANSFER OVER RAIL WITH MANUAL TRACTION
- ELECTRIC CURRENT ALIMENTATION (110V-240V)
- RECHARGEABLE BATTERIES ALIMENTATION (24V 80AH (20H)) HIGH FREQUENCY CHARGER
- COMMAND ON THE MACHINE
- COMMAND ON THE MACHINE AND THROUGH REMOTE CONTROL
- COMMAND ON THE OVEN, ON SEPARATE PLC OR TABLET
- HEIGHT CHOSEN BY THE CUSTOMER FOR TWO OR MORE OVEN
- ADDITIONAL POSSIBILITY OF CHANGING HEIGHT ( + - 30mm)
- SYSTEM MEASURING WEIGHT OF CASKET, BEFORE CREMATION

#### STANDARD EQUIPMENT:

- MAXIMUM WEIGHT 300KG
- BRIDGE 630mm LARGE- MAXIMUM DIMENSIONS 1'000mm X 2'350mm
- OVEN PENETRATION: 1'400mm (ADDITIONAL + 30mm)
- STOP SECURITY BUTTON
- SECURITY KEY (ON/OFF)
- ACCELERATION AND SPEED REGULATION FOR THE COFFIN TO BE INTRODUCED
- HANDLES FOR LATERAL MOVEMENTS
- MANUAL MECHANISM FOR INTRODUCING THE COFFIN IN CASE OF BLACKOUT
- HANDBOOK PROVIDED IN CUSTOMER'S NATIVE LANGUAGE
- CEE DECLARATION OF CONFORMITY



## EXW AUTOLOADER 008R (INTRODUCING 180° ROTATING BRIDGE +90° / 0° / -90°- COFFIN LOADING WITH ELECTRIC DRIVE AUTOLOADER)

### CUSTOMER'S OPTIONAL CHOICES:

- LINEAR TRANSFER RAILS WITH ELECTRIC DRIVE
- COFFINS' LOADING WITH ELECTRICAL DRIVE
- ELECTRIC CURRENT ALIMENTATION (110V-240V)
- 180° BRIDGE ROTATION (+90° / 0° / -90°)
- RECHARGEABLE BATTERIES ALIMENTATION (24V 80AH (20H)) HIGH FREQUENCY CHARGER
- COMMAND ON THE MACHINE
- COMMAND ON THE MACHINE AND THROUGH REMOTE CONTROL
- COMMAND ON THE OVEN, ON SEPARATE PLC OR TABLET
- HEIGHT CHOSEN BY THE CUSTOMER DEPENDING ON THE OVEN
- ADDITIONAL POSSIBILITY OF CHANGING HEIGHT ( + - 30mm)
- SYSTEM MEASURING WEIGHT OF CASKET, BEFORE CREMATION

### STANDARD EQUIPMENT:

- MAXIMUM WEIGHT 300KG
- BRIDGE 630mm LARGE- MAXIMUM DIMENSIONS 900mm X 2190mm
- OVEN PENETRATION: 1'400mm (ADDITIONAL + 30mm)
- STOP SECURITY BUTTON
- SECURITY KEY (ON/OFF)
- ACCELERATION AND SPEED REGULATION FOR THE COFFIN TO BE INTRODUCED
- HANDLES FOR BRIDGE LATERAL MOVEMENTS
- MANUAL MECHANISM FOR INTRODUCING THE COFFIN IN CASE OF BLACKOUT
- HANDBOOK PROVIDED IN CUSTOMER'S NATIVE LANGUAGE
- CEE DECLARATION OF CONFORMITY



**EXW RADIOLOADER**  
RADIO-CONTROL



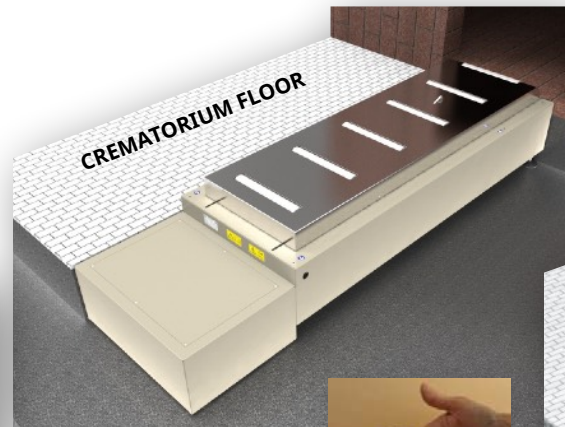
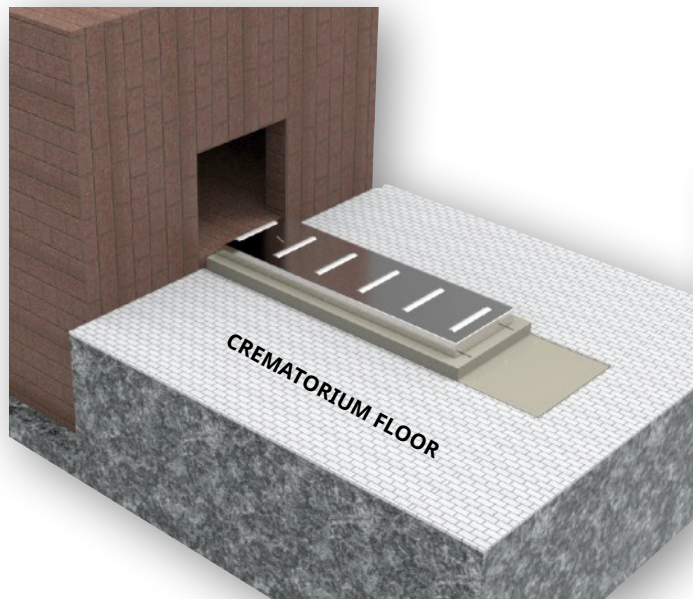
### EXW AUTOLOADER 009F (LOWERED LOADER IN FIXED POSITION - OPERATED BY OVEN "CONTROLLER" OR RADIO-CONTROL)

#### CUSTOMER'S OPTIONAL CHOICES:

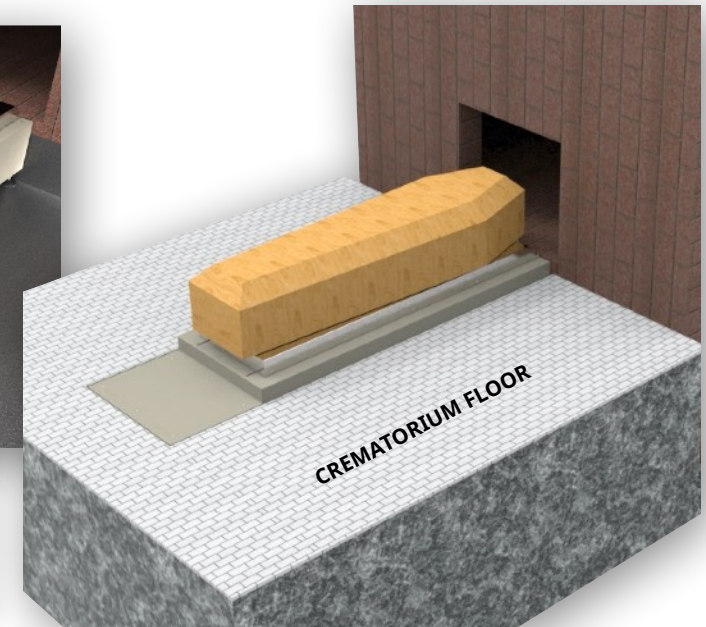
- FIXED POSITION INTRODUCER (BUILT IN THE GROUND)
- ELECTRIC CURRENT ALIMENTATION (110V-240V)
- RECHARGEABLE BATTERIES ALIMENTATION (24V 80AH (20H)) HIGH FREQUENCY CHARGER
- COMMAND ON THE MACHINE
- COMMAND ON THE MACHINE AND THROUGH REMOTE CONTROL
- COMMAND ON THE OVEN, ON SEPARATE PLC OR TABLET
- HEIGHT AROUND 210mm FROM THE FLOOR
- ADDITIONAL POSSIBILITY OF CHANGING HEIGHT ( + - 30mm)
- SYSTEM MEASURING WEIGHT OF CASKET, BEFORE CREMATION

#### STANDARD EQUIPMENT:

- MAXIMUM WEIGHT 300KG
- BRIDGE 630MM LARGE- MAXIMUM DIMENSIONS 820mm X 2'820mm X 320mm
- OVEN PENETRATION: 1'400mm (ADDITIONAL + 30mm)
- STOP SECURITY BUTTON
- SECURITY KEY (ON/OFF)
- ACCELERATION AND SPEED REGULATION FOR THE COFFIN TO BE INTRODUCED
- MANUAL MECHANISM FOR INTRODUCING THE COFFIN IN CASE OF BLACKOUT
- HANDBOOK PROVIDED IN CUSTOMER'S NATIVE LANGUAGE
- CEE DECLARATION OF CONFORMITY



EXR RADIO-LOADER  
RADIO-CONTROL



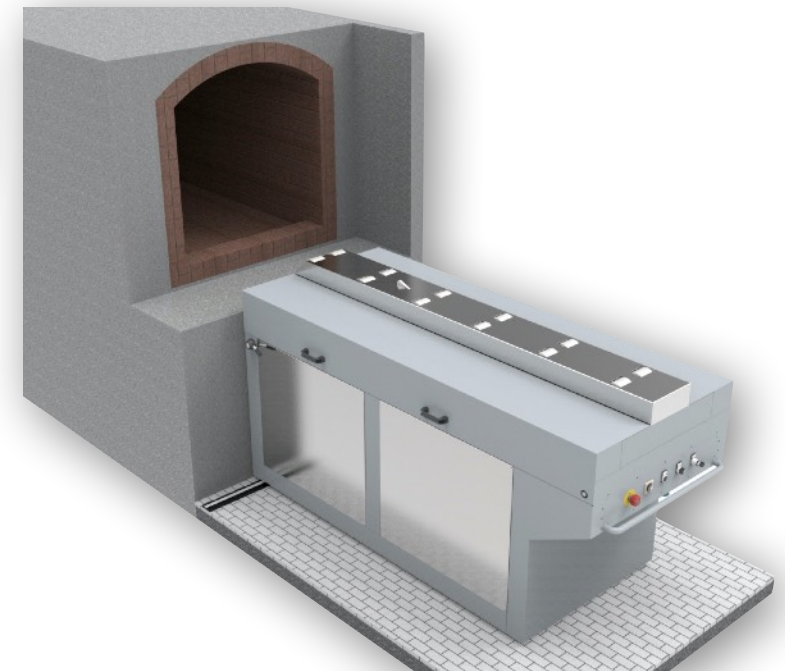
### EXW AUTOLOADER 010A (TIGHT BRIDGE FOR LOADING COFFINS EVEN WITH FEET)

#### CUSTOMER'S OPTIONAL CHOICES:

- LATERAL TRANSFER OVER RAIL OR LOCKABLE WHEELS
- ELECTRIC CURRENT ALIMENTATION (110V-240V)
- RECHARGEABLE BATTERIES ALIMENTATION (24V 80AH (20H)) HIGH FREQUENCIES CHARGER
- COMMAND ON THE MACHINE
- COMMAND ON THE MACHINE AND THROUGH REMOTE CONTROL
- COMMAND ON THE OVEN, ON SEPARATE PLC OR TABLET
- HEIGHT CHOSEN BY THE CUSTOMER DEPENDING ON THE OVEN
- ADDITIONAL POSSIBILITY OF CHANGING HEIGHT (+-30mm)
- SYSTEM MEASURING WEIGHT OF CASKET, BEFORE CREMATION

#### STANDARD EQUIPMENT:

- MAXIMUM WEIGHT 300KG
- BRIDGE 250mm LARGE- MAXIMUM DIMENSIONS 990mm X 2'260mm
- OVEN PENETRATION: 1'400MM (ADDITIONAL + 30 mm)
- STOP SECURITY BUTTON
- SECURITY KEY (ON/OFF)
- ACCELERATION AND SPEED REGULATION FOR THE COFFIN TO BE INTRODUCED
- HANDLES FOR LATERAL MOVEMENTS
- MANUAL MECHANISM FOR INTRODUCING THE COFFIN IN CASE OF BLACKOUT
- HANDBOOK PROVIDED IN CUSTOMER'S NATIVE LANGUAGE
- CEE DECLARATION OF CONFORMITY



IT LOADS COFFINS WITH FEET, NO NEED  
TO TAKE THEM OFF PRIOR CREMATION

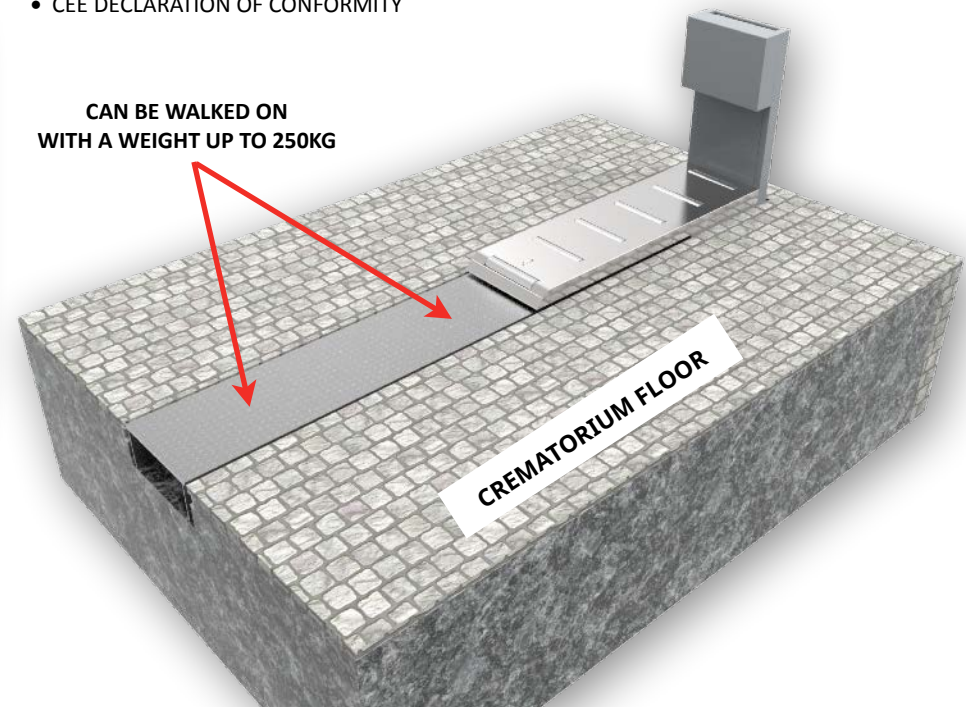
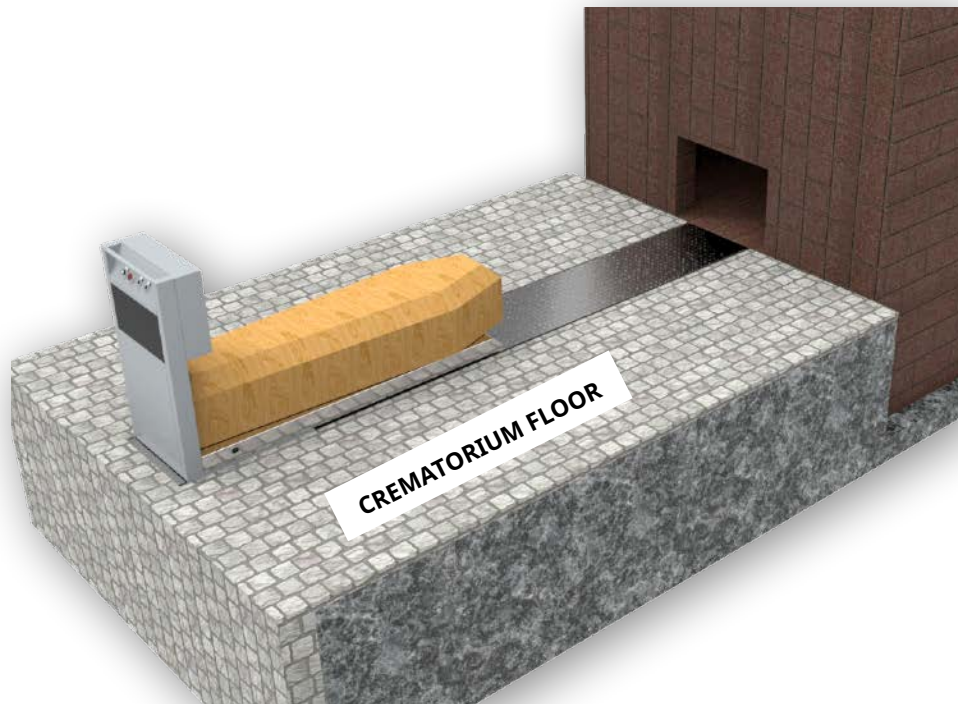
### EXW AUTOLOADER 0011M (LOWERED LOADER - ELECTRIC OR MANUAL ADVANCEMENT PUSH)

#### CUSTOMER'S OPTIONAL CHOICES:

- FIXED POSITION INTRODUCER (BUILT IN THE GROUND)
- ELECTRIC CURRENT ALIMENTATION (110V-240V)
- RECHARGEABLE BATTERIES ALIMENTATION (24V 80AH (20H)) HIGH FREQUENCY CHARGER
- COMMAND ON THE MACHINE
- COMMAND ON THE MACHINE AND THROUGH REMOTE CONTROL
- COMMAND ON THE OVEN, ON SEPARATE PLC OR TABLET
- HEIGHT AROUND +120mm FROM THE FLOOR
- ADDITIONAL POSSIBILITY OF CHANGING HEIGHT ( + - 30mm)
- SYSTEM MEASURING WEIGHT OF CASKET, BEFORE CREMATION

#### STANDARD EQUIPMENT:

- MAXIMUM WEIGHT 300KG
- BRIDGE 630mm LARGE- MAXIMUM DIMENSIONS 820mm X 343mm
- OVEN PENETRATION: 1'400mm (ADDITIONAL + 30mm)
- STOP SECURITY BUTTON
- SECURITY KEY (ON/OFF)
- ACCELERATION AND SPEED REGULATION FOR THE COFFIN TO BE INTRODUCED
- HANDLES FOR LINEAR MOVEMENTS
- MANUAL MECHANISM FOR INTRODUCING THE COFFIN IN CASE OF BLACKOUT
- HANDBOOK PROVIDED IN CUSTOMER'S NATIVE LANGUAGE
- CEE DECLARATION OF CONFORMITY



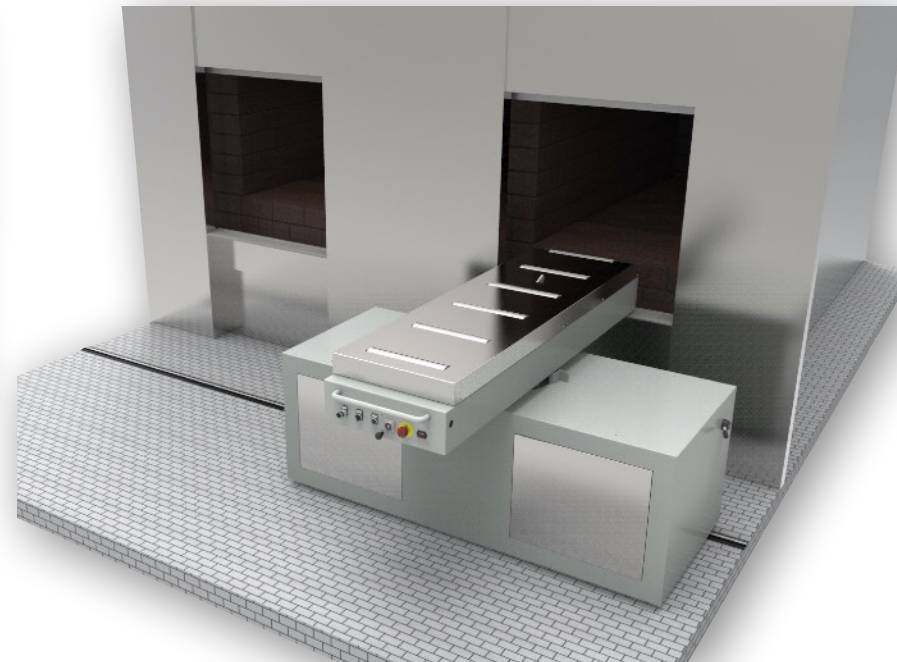
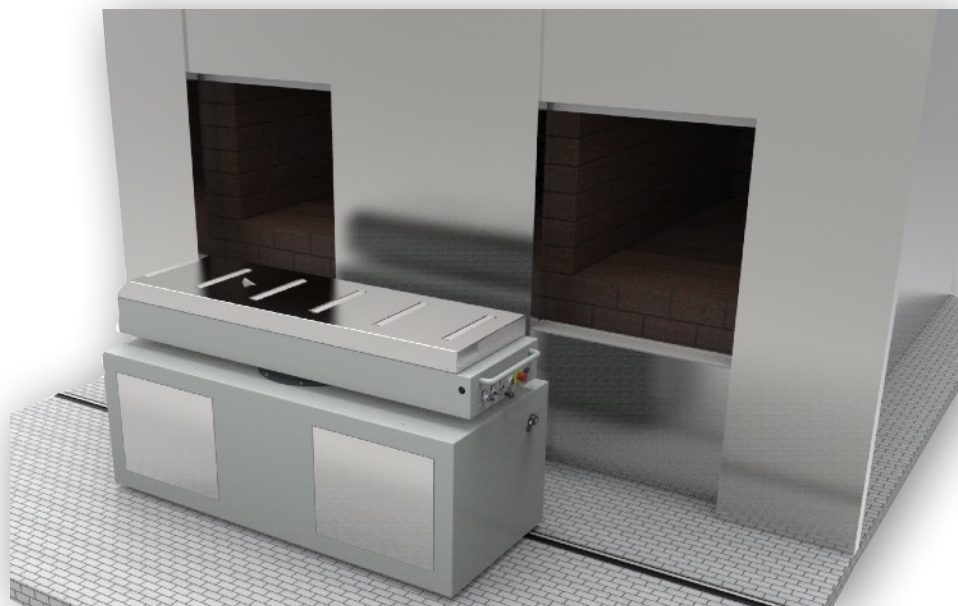
### EXW AUTOLOADER 013R (180° ROTATING BRIDGE +90° / 0° / -90° - ELECTRIC POWER PROTECTIONS BY NYLON/STEEL CABLE CHAIN)

#### CUSTOMER'S OPTIONAL CHOICES:

- LATERAL TRANSFER OVER RAILS
- ELECTRIC CURRENT ALIMENTATION (110V-240V)
- RECHARGEABLE BATTERIES ALIMENTATION (24V 80AH (20H)) HIGH FREQUENCIES CHARGER
- 180° BRIDGE ROTATION (+90° / 0° / -90°)
- COMMAND ON THE MACHINE
- COMMAND ON THE OVEN, ON SEPARATE PLC OR TABLET
- HEIGHT CHOSEN BY THE CLIENT
- ADDITIONAL POSSIBILITY OF CHANGING HEIGHT (+-30mm)
- ELECTRIC POWER PROTECTIONS BY NYLON/STEEL CABLE CHAIN
- SYSTEM MEASURING WEIGHT OF CASKET, BEFORE CREMATION

#### STANDARD EQUIPMENT:

- MAXIMUM WEIGHT 300KG
- BRIDGE 630mm LARGE - MAXIMUM DIMENSIONS 900mm X 2190mm
- OVEN PENETRATION: 1'400mm (ADDITIONAL + 30 mm)
- STOP SECURITY BUTTON (ON THE REMOTE CONTROL)
- SECURITY KEY (ON/OFF)
- ACCELERATION AND SPEED REGULATION FOR THE COFFIN TO BE INTRODUCED
- HANDLES FOR LATERAL MOVEMENTS
- HANDLES FOR BRIDGE LATERAL MOVEMENTS
- MANUAL MECHANISM FOR INTRODUCING THE COFFIN IN CASE OF BLACKOUT
- HANDBOOK PROVIDED IN CUSTOMER'S NATIVE LANGUAGE
- CEE DECLARATION OF CONFORMITY



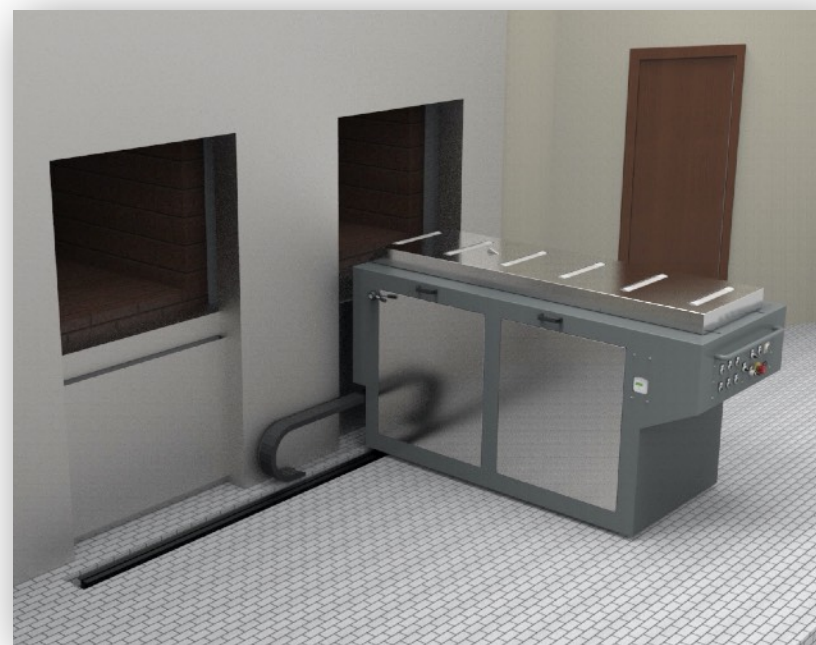
### EXW AUTOLOADER 014A (ELECTRIC POWER PROTECTIONS BY NYLON/STEEL CABLE CHAIN)

#### CUSTOMER'S OPTIONAL CHOICES:

- LATERAL TRANSFER OVER RAILS
- ELECTRIC CURRENT ALIMENTATION (110V-240V)
- RECHARGEABLE BATTERIES ALIMENTATION (24V 80AH (20H)) HIGH FREQUENCIES CHARGER
- COMMAND ON THE MACHINE
- COMMAND ON THE OVEN, ON SEPARATE PLC OR TABLET
- HEIGHT CHOSEN BY THE CLIENT
- ADDITIONAL POSSIBILITY OF CHANGING HEIGHT (+-30mm)
- ELECTRIC POWER PROTECTIONS BY NYLON/STEEL CABLE CHAIN
- SYSTEM MEASURING WEIGHT OF CASKET, BEFORE CREMATION

#### STANDARD EQUIPMENT:

- MAXIMUM WEIGHT 300KG
- BRIDGE 630mm LARGE - MAXIMUM DIMENSIONS 900mm X 2190mm
- OVEN PENETRATION: 1'400mm (ADDITIONAL + 30 mm)
- STOP SECURITY BUTTON (ON THE REMOTE CONTROL)
- SECURITY KEY (ON/OFF)
- ACCELERATION AND SPEED REGULATION FOR THE COFFIN TO BE INTRODUCED
- HANDLES FOR LATERAL MOVEMENTS
- MANUAL MECHANISM FOR INTRODUCING THE COFFIN IN CASE OF BLACKOUT
- HANDBOOK PROVIDED IN CUSTOMER'S NATIVE LANGUAGE
- CEE DECLARATION OF CONFORMITY





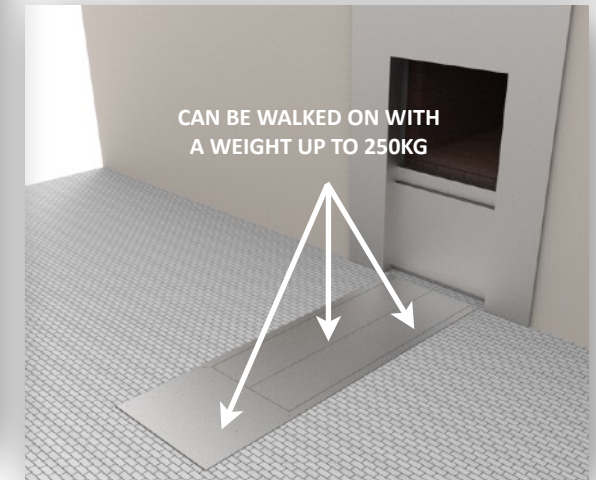
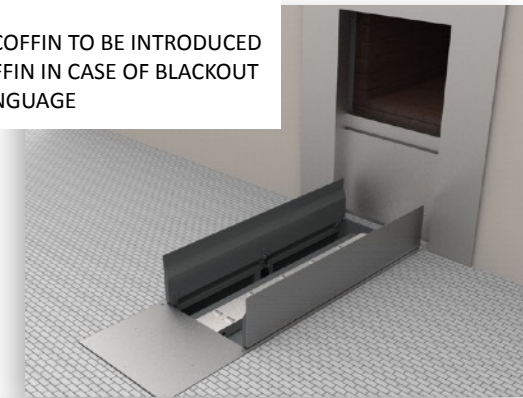
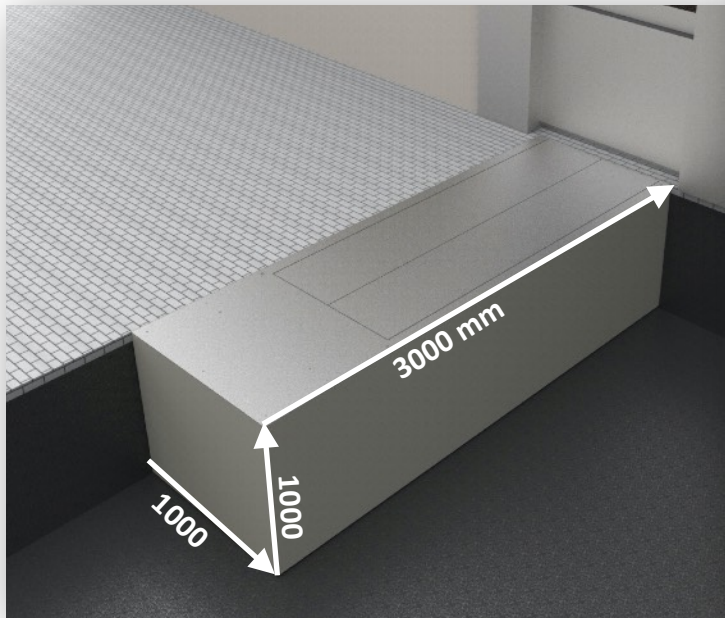
### EXW AUTOLOADER 017F (TIGHT BRIDGE LOADER FULLY HIDDEN IN THE GROUND - LOADING COFFIN EVEN WITH FEET)

#### CUSTOMER'S OPTIONAL CHOICES:

- FIXED POSITION INTRODUCER (BUILT IN THE GROUND)
- ELECTRIC CURRENT ALIMENTATION (110V-240V)
- RECHARGEABLE BATTERIES ALIMENTATION (24V 80AH (20H)) H. F. CHARGER
- COMMAND ON THE MACHINE AND THROUGH REMOTE CONTROL
- COMMAND ON THE OVEN, ON SEPARATE PLC OR TABLET
- HEIGHT WHEN THE MACHINE IS NOT WORKING: 000mm FROM THE GROUND
- OPERATIVE HEIGHT: FROM +450mm TO +1'200mm FROM THE FLOOR
- ADDITIONAL POSSIBILITY OF CHANGING HEIGHT (+-30mm)
- SYSTEM MEASURING WEIGHT OF CASKET, BEFORE CREMATION

#### STANDARD EQUIPMENT:

- MAXIMUM WEIGHT 300 KG
- BRIDGE 250mm LARGE- MAXIMUM DIMENSIONS 1'000mm X 1'000mm X 3'000mm
- OVEN PENETRATION: 1'400mm (ADDITIONAL + 30mm)
- STOP SECURITY BUTTON (ON THE REMOTE CONTROL)
- SECURITY KEY (ON/OFF)
- ACCELERATION AND SPEED REGULATION FOR THE COFFIN TO BE INTRODUCED
- MANUAL MECHANISM FOR INTRODUCING THE COFFIN IN CASE OF BLACKOUT
- HANDBOOK PROVIDED IN CUSTOMER'S NATIVE LANGUAGE
- CEE DECLARATION OF CONFORMITY



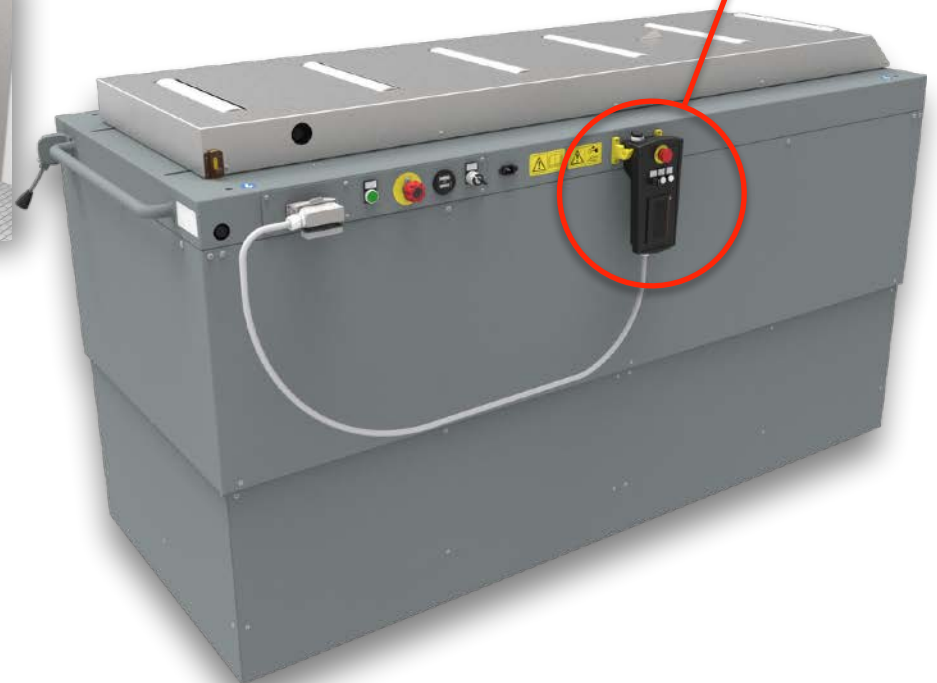
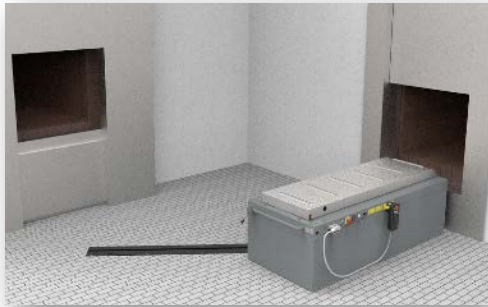
### EXW AUTOLOADER 017E - ELECTRIC DRIVE - ROTATIONS 90° - SERVE TWO DIFFERENT OVEN

#### CUSTOMER'S OPTIONAL CHOICES:

- LATERAL TRANSFER RAILS WITH ELECTRIC DRIVE
- ELECTRIC CURRENT ALIMENTATION (110V-240V)
- RECHARGEABLE BATTERIES ALIMENTATION (24V 80AH (20H) H.F. CHARGER)
- COMMAND ON THE MACHINE
- COMMAND ON THE OVEN, ON SEPARATE PLC OR TABLET
- HEIGHT CHOSEN BY THE CLIENT
- ADDITIONAL POSSIBILITY OF CHANGING HEIGHT (+-30mm)
- SYSTEM MEASURING WEIGHT OF CASKET, BEFORE CREMATION

#### STANDARD EQUIPMENT:

- MAXIMUM WEIGHT 300KG
- BRIDGE 630mm LARGE - MAXIMUM DIMENSIONS 950mm X 2225mm
- OVEN PENETRATION: 1'400mm (ADDITIONAL + 30 mm)
- STOP SECURITY BUTTON (ON THE REMOTE CONTROL WITH TOUCH SCREEN)
- SECURITY KEY (ON/OFF)
- ACCELERATION AND SPEED REGULATION FOR THE COFFIN TO BE INTRODUCED
- MANUAL MECHANISM FOR INTRODUCING THE COFFIN IN CASE OF BLACKOUT
- HANDBOOK PROVIDED IN CUSTOMER'S NATIVE LANGUAGE
- CEE DECLARATION OF CONFORMITY



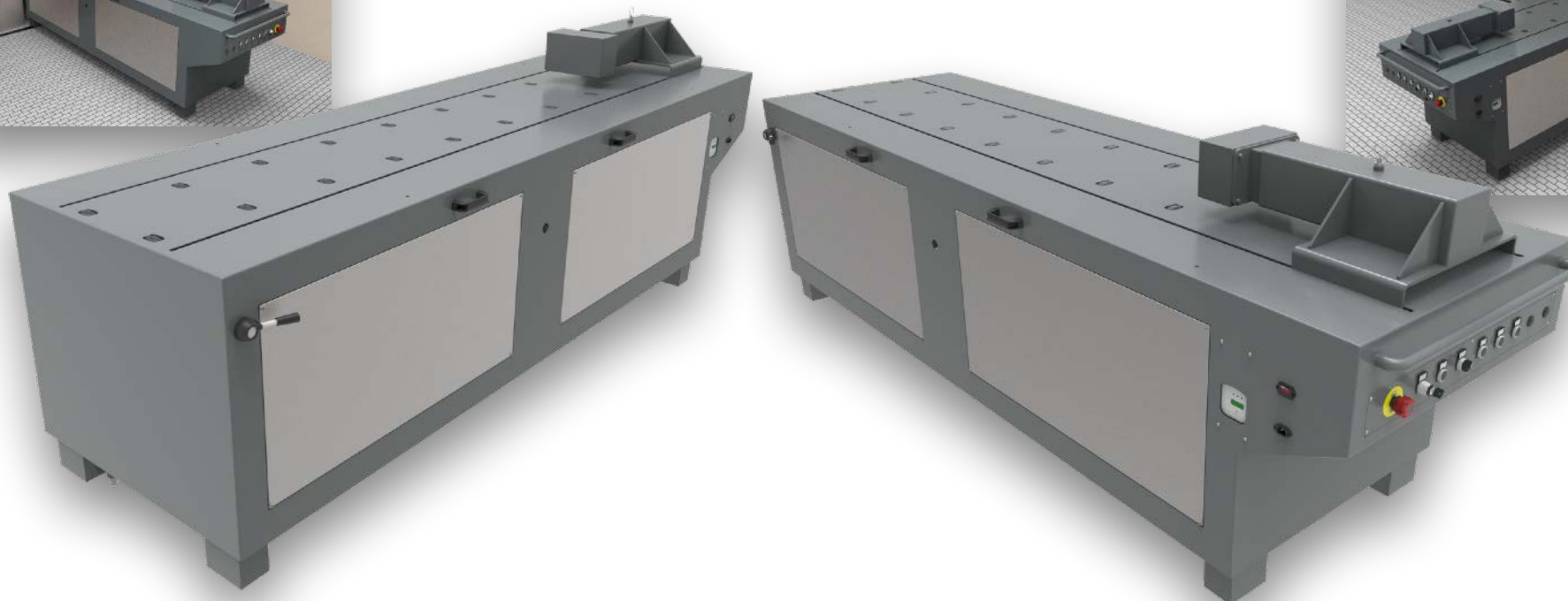
## EXW AUTOLOADER 018S - PUSH SYSTEM

## CUSTOMER'S OPTIONAL CHOICES:

- LATERAL TRANSFER ON RAILS
- ELECTRIC CURRENT ALIMENTATION (110V-240V)
- RECHARGEABLE BATTERIES ALIMENTATION (24V 80AH/20Hr) HIGH FREQUENCIES CHARGER
- COMMAND ON THE MACHINE
- COMMAND ON THE OVEN, ON SEPARATE PLC OR TABLET
- HEIGHT CHOSEN BY THE CLIENT
- ADDITIONAL POSSIBILITY OF CHANGING HEIGHT (+-30mm)

## STANDARD EQUIPMENT:

- MAXIMUM WEIGHT 300KG
- BRIDGE 630mm LARGE - MAXIMUM DIMENSIONS 900mm X 3070mm
- OVEN PENETRATION: 2'600mm (ADDITIONAL + 30 mm)
- STOP SECURITY BUTTON (ON THE REMOTE CONTROL WITH TOUCH SCREEN)
- SECURITY KEY (ON/OFF)
- ACCELERATION AND SPEED REGULATION FOR THE COFFIN TO BE INTRODUCED
- MANUAL MECHANISM FOR INTRODUCING THE COFFIN IN CASE OF BLACKOUT
- HANDBOOK PROVIDED IN CUSTOMER'S NATIVE LANGUAGE
- CEE DECLARATION OF CONFORMITY



### EXW AUTOLOADER 019A - EXTRA-LONG INTRODUCER BRIDGE (+1'700 MM)

#### CUSTOMER'S OPTIONAL CHOICES:

- LATERAL TRANSFER ON RAILS
- ELECTRIC CURRENT ALIMENTATION (110V-240V)
- RECHARGEABLE BATTERIES ALIMENTATION (24V 80AH/20Hr) HIGH FREQUENCIES CHARGER
- COMMAND ON THE MACHINE
- COMMAND ON THE OVEN, ON SEPARATE PLC OR TABLET
- HEIGHT CHOSEN BY THE CLIENT
- ADDITIONAL POSSIBILITY OF CHANGING HEIGHT (+-30mm)
- ELECTRIC POWER PROTECTIONS BY NYLON/STEEL CABLE CHAIN
- SYSTEM MEASURING WEIGHT OF CASKET, BEFORE CREMATION

#### STANDARD EQUIPMENT:

- MAXIMUM WEIGHT 300KG
- BRIDGE 630mm LARGE - MAXIMUM DIMENSIONS 900mm X 2'555mm
- OVEN PENETRATION: 1'700mm (ADDITIONAL + 30 mm)
- STOP SECURITY BUTTON (ON THE REMOTE CONTROL WITH TOUCH SCREEN)
- SECURITY KEY (ON/OFF)
- ACCELERATION AND SPEED REGULATION FOR THE COFFIN TO BE INTRODUCED
- MANUAL MECHANISM FOR INTRODUCING THE COFFIN IN CASE OF BLACKOUT
- HANDBOOK PROVIDED IN CUSTOMER'S NATIVE LANGUAGE
- CEE DECLARATION OF CONFORMITY



### EXW AUTOLOADER 020R-01 - ELECTRIC DRIVE - ROTATIONS ON SITE - THROUGH REMOTE CONTROL

#### CUSTOMER'S OPTIONAL CHOICES:

- ELECTRIC DRIVE FOR TRANSFER ON RAILS
- ELECTRIC CURRENT ALIMENTATION (110V-240V)
- RECHARGEABLE BATTERIES ALIMENTATION (24V 80AH/20Hr) HIGH FREQUENCIES CHARGER
- COMMAND ON THE MACHINE
- COMMAND ON THE OVEN AND THROUGH REMOTE CONTROL
- HEIGHT CHOSEN BY THE CLIENT
- ADDITIONAL POSSIBILITY OF CHANGING HEIGHT (+-30mm)
- MANUAL ROTATIONS AUTOLOADER ON SITE (+90° / 0° / -90°) CHOSEN BY THE CUSTOMERS
- SYSTEM MEASURING WEIGHT OF CASKET, BEFORE CREMATION



EXW RADIOLOADER  
RADIO-CONTROL

#### STANDARD EQUIPMENT:

- MAXIMUM WEIGHT 300KG
- BRIDGE 630mm LARGE - MAXIMUM DIMENSIONS 900mm X 2255mm
- OVEN PENETRATION: 1400mm (ADDITIONAL + 30 mm)
- STOP SECURITY BUTTON (ON THE REMOTE CONTROL WITH TOUCH SCREEN)
- SECURITY KEY (ON/OFF)
- ACCELERATION AND SPEED REGULATION FOR THE COFFIN TO BE INTRODUCED
- MANUAL MECHANISM FOR INTRODUCING THE COFFIN IN CASE OF BLACKOUT
- HANDBOOK PROVIDED IN CUSTOMER'S NATIVE LANGUAGE
- CEE DECLARATION OF CONFORMITY



### EW AUTOLOADER CS 03-08-SP - MANUAL PUSH

#### CUSTOMER'S OPTIONAL CHOICES:

- MANUAL PUSH FOR TRANSFER ON RAILS
- ELECTRIC DRIVE FOR TRANSFER ON RAILS
- ELECTRIC CURRENT ALIMENTATION (110V-240V)
- RECHARGEABLE BATTERIES ALIMENTATION (24V 80AH/20Hr) HIGH FREQUENCIES CHARGER
- COMMAND ON THE MACHINE
- COMMAND ON THE OVEN AND THROUGH REMOTE CONTROL
- HEIGHT CHOSEN BY THE CLIENT
- ADDITIONAL POSSIBILITY OF CHANGING HEIGHT (+-30mm)

#### STANDARD EQUIPMENT:

- MAXIMUM WEIGHT 300KG
- BRIDGE 900mm LARGE - MAXIMUM DIMENSIONS 1010mm X 4'500mm
- SECURITY "STOP" BUTTON (ON THE REMOTE CONTROL WITH TOUCH SCREEN)
- SECURITY KEY (ON/OFF)
- HANDBOOK PROVIDED IN CUSTOMER'S NATIVE LANGUAGE
- CEE DECLARATION OF CONFORMITY



## TROLLEY - ASHES PROCESSOR - SCANNER

**TROLLEY** - LOADING COFFIN MANUAL OR BY ELECTRICAL DRIVE  
ALL OUR TROLLEY FOR FUNERAL CASKET TRANSPORT, IS BUILT IN FULL COMPLIANCE WITH REGULATIONS C.E.

**ASHES PROCESSOR - EXW PRO-CEN CRD 001S "HIGH SPEED" ASPIRATED**  
3 MINUTES GAP BETWEEN CREMATION AND ASHES DELIVERY - AUTOMATIC CYCLE FOR ASHES-METAL SEPARATION

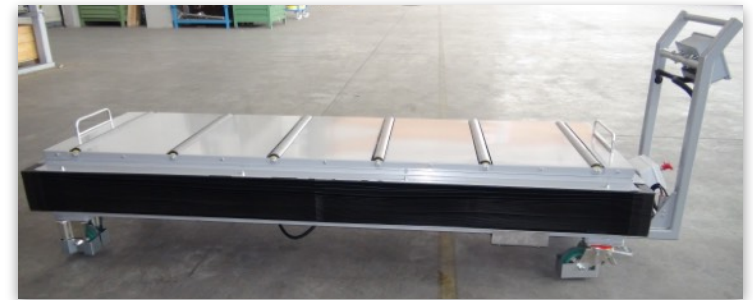
**SCANNER X-RAY - MODEL 1006 HC** SCANNER FOR CREMATORIA  
IS USED FOR THE INSPECTION IN THE SEALED AND CLOSED COFFIN, HELPS SEE THE PRESENCE OF DANGEROUS OBJECTS, INSIDE THE COFFIN ITSELF.



EXW TROLLEY ES 03/18 SP



EXW PRO-CEN CRD 001S "HIGH SPEED" ASPIRATED



EXW TROLLEY RR-0305



SCANNER X RAY 1006 HC

**EXW TROLLEY ES 03/18 SP**

LOADING COFFIN MAX 300KG OPERATING FROM +180 MM TO +1'900 MM  
COFFINS' LOADING/UNLOADING, MOVE AND LIFT WITH ELECTRICAL DRIVE





**EXW TROLLEY RR-0305 - TROLLEY FOR FUNERAL CASKET TRANSPORT, BUILT IN FULL COMPLIANCE WITH REGULATIONS C.E.**



**TECHNICAL FEATURES**

- FULL COMPLIANCE WITH EUROPEAN CE SAFETY STANDARDS.
- STEEL STRUCTURE EXTERNALLY FINISHED WITH "DURA-PROTECT" POWDER COATING.
- PUSH-BUTTON PANEL WITH 2-BUTTON "MAN-PRESENT" SELECTOR SWITCH.
- SAFETY EMERGENCY BUTTONS.
- PERIMETER ANTI-SHEARING SAFETY BELLOW (INDUSTRIAL STANDARD).
- LOADING PLATFORM IN STEEL, ANTI-SHEARING FAIRING, WITH 6 IDLE ROLLERS.
- MAX LOAD 300 KG.
- **DIMENSION**
  - ▶ 2'300 MM LENGTH.
  - ▶ 805 MM WIDTH.
  - ▶ MINIMUM HEIGHT ABOVE THE LOADING PLANE 450MM.
  - ▶ MAXIMUM HEIGHT ABOVE THE LOADING LEVEL 1'700MM.
- ELECTRO-HYDRAULIC UP/DOWN SYSTEM WITH SECURITY END STOPS.
- POWERED BY 24V 64AH BATTERY (20H) WITH BATTERY CHARGER.
- RESIDUAL CHARGE SIGNAL DISPLAY.
- BATTERY UNCOUPLING SYSTEM IN CASE THE TROLLEY IS NOT USED.
- FOUR SAFETY WHEELS, ANTI-CRUSH FAIRING.
- THE TWO PIVOTING REAR WHEELS ARE EQUIPPED WITH A PARKING BRAKE SYSTEM.
- SYSTEM FOR LOCKING THE FUNERAL CASKET DURING TRANSPORT.



**EXW PRO-CEN CRD 001S "HIGH SPEED" ASPIRATED**

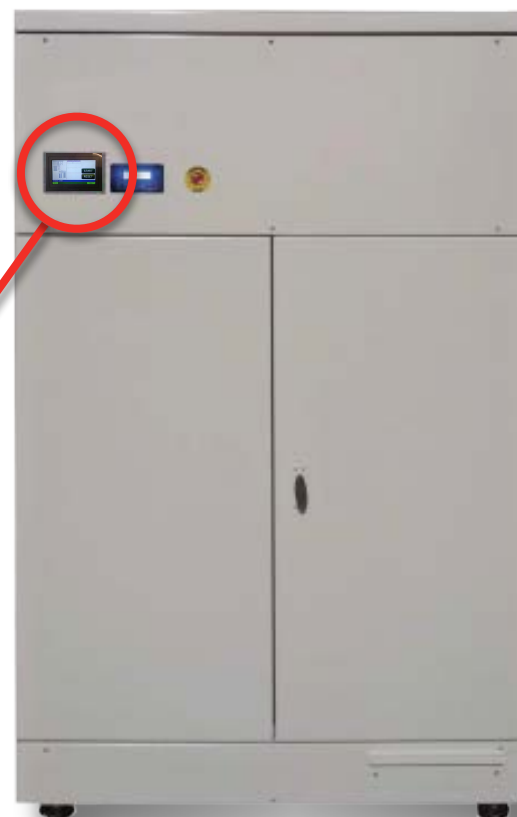
3 MINUTES GAP BETWEEN CREMATION AND ASHES DELIVERY - AUTOMATIC CYCLE FOR ASHES-METAL SEPARATION

**THE MAIN ADVANTAGES OF THE SOLUTION**

- FULLY AUTOMATIC PROCESS WITH COMPUTERIZED COMMANDS.
- FAST ASHES CONVERSION TIME (<3 MM).
- EFFECTIVENESS IN THE TREATMENT OF ASHES.
- PREVENTS MANUAL ASHES TRANSFERS.
- COMPATIBLE WITH ALL TYPES OF URNS OF ORDINARY DIMENSIONS.
- PRACTICAL DRAWER FOR ASH REMOVAL CONTROLLED BY FILTERED AIR.
- OPERATIONS INTRODUCTION / EXTRACTION OF ASHES DRAWER EASY AND SAFE.
- AUTOMATIC SEPARATION OF METAL PARTS WITHOUT OPERATOR INTERVENTION.
- PROVIDES A CAPILLARY TREATMENT OF THE REMAINS OF THE CREMATIONS.

**TECHNICAL FEATURES**

- EXTERIOR MADE OF ACOUSTIC PANELS AND COATED SHEETS.
- PAINTED OUTSIDE WITH EPOXY PAINT.
- TOTALLY FAIRED.
- MECHANISM IN STAINLESS STEEL AISI-304.
- PNEUMATIC MECHANISM.
- BUILT-IN AIR COMPRESSOR.
- SIZE (MM): 2.000 X 1.230 X 855
- VOLTAGE 220 V 50/60 HZ.
- PROCESSING TIME 3 MINUTES. (PROGRAMMABLE)
- PROGRAMMING AND CONTROL WITH TOUCH SCREEN
- WARRANTY: 1 YEAR
- CERTIFICATION CE



**EXW PRO-CEN CRD 001S**  
ASHES PROCESSOR "HIGH SPEED"



## SCANNER X RAY 1006 HC

IT REALIZES, BEFORE CREMATION, **AN ACCURATE SECURITY INSPECTION** IN ALREADY SEALED AND CLOSED COFFINS. IN JUST **3/5 MINUTES**, IT **VERIFIES THE PRESENCE OF DANGEROUS OBJECTS** AND HUMAN RESIDUUMS INSIDE THE COFFIN SUCH AS **EXPLOSIVE MATERIALS, PREVENTING PSYCHOLOGICAL TRAUMA FOR FAMILIES AND RELATIVES** DURING FUNERAL CEREMONY.

EUROXWAY WAS BORN AS A COMPANY SPECIALIZED IN SELLING “**EQUIPMENT CUSTOMIZED FOR CREMATORIA IN EUROPE**”, CAN PROVIDE SERVICES BASED ON CUSTOMER’S NEEDS.

TO COMPLETE SERVICES OFFERED TO OUR CLIENTS, WE ALSO MADE, ON REQUEST, TECHNICAL BASIC TRAINING FOR USING OUR EQUIPMENT RESPECTFULLY, FRONT TO FAMILIES DURING FUNERALS

### SOME OF THE X RAY SCANNER’S ADVANTAGES:

- MONITORING INSIDE THE COFFIN, EVEN IF IT’S CLOSED WITH DOUBLE METAL COFFIN, TO VERIFY THE PRESENCE OF PACEMAKER, CELL PHONES, WATCH BATTERIES AND PROTHESIS FULLY PREVENTS THE RISK OF EXPLOSION DURING CREMATION, DANGEROUS FOR THE OVEN ITSELF, THE STAFF AND SOMETIMES EVEN FOR THE MOURNING FAMILY (*IN FRANCE IS USUAL, FOR FAMILY, ASSIST THE INTRODUCTIONS COFFIN TO OVEN*)
- POSSIBILITY OF INTRODUCING THROUGH THE SCANNER ALSO EXTRA LARGE COFFINS
- POSSIBILITY OF DISTINGUISH WHETHER THE DEPARTED WAS A MAN OR A WOMAN TO AVOID MISTAKES IN GIVING THE ASHES TO THE FAMILY
- VISUALIZATION OF DANGEROUS ORGANIC AND/OR INORGANIC MATERIALS INTRODUCED IN THE COFFIN (*ALCOHOL BOTTLES, METAL OBJECTS, PACE-MAKER BATTERY.....*) BEFORE THE PROCEDURE OF CREMATIONS
- SPEED IN LOADING-UNLOADING OPERATIONS AND IN MONITORING WHAT’S INSIDE THE COFFIN (*3/5 MINUTES*)
- COMFORTABLE OPERATOR SEAT (*DESK, CONSOLE, MONITOR, ETC.*) THAT CAN BE POSITIONED BOTH CLOSE TO THE SCANNER OR FAR AWAY (*AFTER TECHNICAL TEST ON ENVIRONMENT AND SCANNER DISTANCE*)
- EASY TO INSTALL, USE AND MAINTAIN WITH SIMPLE CONTROL AND COMMAND ELEMENTS (*IT WORKS WITH NORMAL ALTERNATING CURRENT AT 220V*)
- LONGEVITY OF THE SCANNER (*DESIGNED AND BUILT TO WORK MORE HOURS CONSTANTLY*)
- PROGRAMMABLE MAINTENANCE WITH MULTI ANNUAL CONTRACTS OF ASSISTANCE (*WITH QUALIFIED EUROXWAY STAFF*)
- FIXED POSITIONED SCANNER, BUT NOT CLASPED TO THE GROUND (*IT LAY ON REGULABLE FEET*)
- MOBILE POSITION SCANNER (*IT LAY ON MOVING WHEELS AND REGULABLE FEET*).

### OPTIONALS

- ▶ *DIFFERENT SECURITY LEVEL PROTECTING MONITOR ACCESS AND CONSOLE*
- ▶ *AUTOMATIC ALARMS POINTING OUT THE PRESENCE OF DANGEROUS OBJECTS*
- ▶ *AUTOMATIC STORING OF IMAGES FOR EVERY SCANNING ON EXTERNAL HD*
- ▶ *GUIDE ROLLER FOR THE AUTOMATIC LOADING OF THE COFFIN INSIDE THE SCANNER FOR HIGHLY PRODUCTIVE CREMATORIIUMS*

ALL EQUIPMENT ARE CERTIFIED



**SCANNER EXW-1006 HC**  
(TUNNEL DIMENSIONS mm1006 L X 1010 H)

## SCANNER X RAY 1006 HC

### TECHNICAL DATA X RAY SCANNER 1006 HC

#### INSPECTION UNIT

- DIMENSIONS: 2980MM (L) X 1335MM (W) X 1975MM (H)
- WEIGHT: 850KG
- TUNNEL SIZE: 1006MM (W) X 1010MM (H)
- CONVEYOR BELT HEIGHT: 790MM (ADJUSTABLE)
- BELT SPEED: 0.2M/S
- MAXIMUM BAG WEIGHT: 200KG
- 1 LCD WIDESCREEN MONITOR
- POWER SUPPLY: MONOPHASE 230VAC +/- 10%
- FREQUENCY: 50/60HZ +/- 3HZ
- POWER ABSORPTION: 1.5KVA
- DUTY CYCLE: 100%

#### X-RAY GENERATOR

- HIGH FREQUENCY MONOBLOC
- TUBE VOLTAGE: 160KV
- TUBE CURRENT: 2MA
- BEAM ORIENTATION: DIAGONAL UPWARDS

#### ENVIRONMENTAL COMPLIANCE

- OPERATIONAL TEMPERATURES: 0°C TO 40°C
- STORAGE TEMPERATURE: -20°C TO +60°C
- HUMIDITY: 95% WITHOUT CONDENSATION
- NOISE LEVEL: < 60DB

#### DETECTION CHARACTERISTICS

- RESOLUTION\*: 38 AWG GUARANTEED, 41 AWG TYPICAL
- PENETRATION\*: 35MM STEEL GUARANTEED, 37MM STEEL TYPICAL
- 1792 DETECTORS IN TWO "L"-SHAPED ROWS OF PHOTODIODES

#### HEALTH AND SAFETY

- THE SYSTEM FULLY MEETS THE APPLICABLE INTERNATIONAL REGULATIONS FOR X-RAY EQUIPMENT
- LEAKAGE DOSE AT 10CM: < 1.0MSV/H (0.1MR/H)
- FILM SAFETY: GUARANTEED UP TO ISO 1600/33 DIN

#### OPTIONS

- ADS
- TIP
- NETSERVER & TIPNET
- DIGITAL IMAGE ARCHIVING (AIMS)
- AIMS NETWORKING
- MODULAR ROLLER TABLES
- 2ND LEVEL REMOTE DISPLAY WORKSTATION(S)
- UPS
- SMART-CARD LOGIN

#### REFERENCE REGULATION: EC, IEC, TSA, STAC, DFT, ENAC

ALL EQUIPMENT ARE CERTIFIED



**SCANNER EXW-1006 HC**  
(TUNNEL DIMENSIONS mm1006 L X 1010 H)

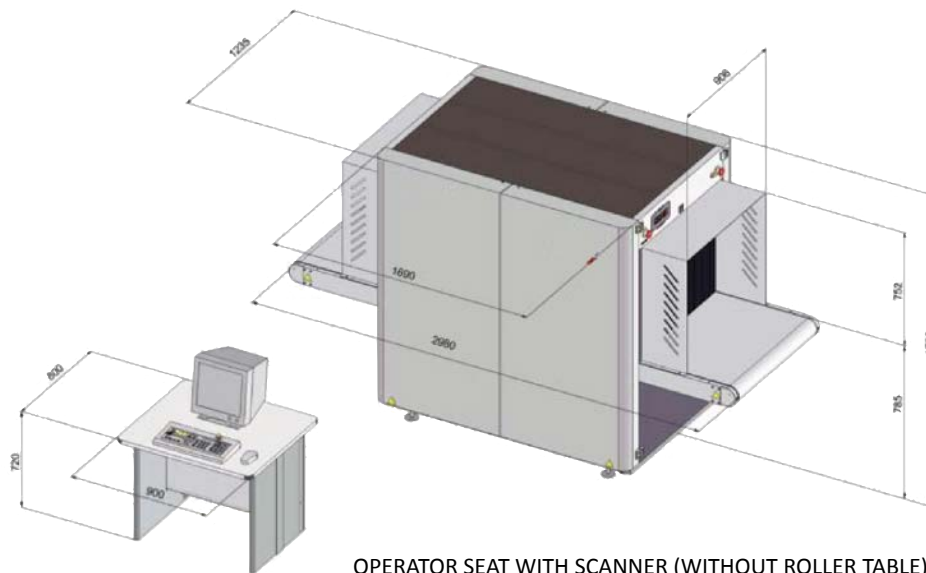
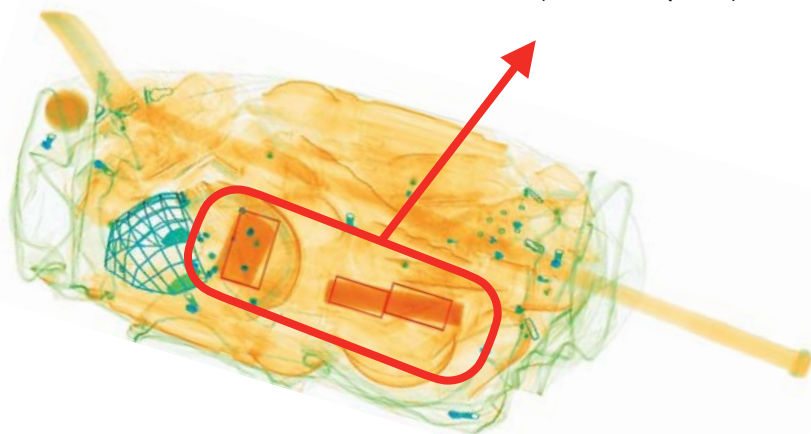
SCANNER X RAY 1006 HC



SAMPLES OF B&W AND COLORS: ORANGE STANDS FOR THE ORGANIC MATTER, BLUE STANDS FOR METAL OBJECTS WHILE GREEN REPRESENTS OTHER ORGANIC MATTER. THE OPERATOR CAN CHANGE ON THE SPOT THE VISUALIZATION MODALITY.

OPERATOR MONITOR WITH CONTROL CONSOLE.

ADS SOFTWARE (OPTIONAL)  
AUTOMATIC IDENTIFICATION SYSTEM OF DANGEROUS  
MATERIALS (SMALL RED SQUARES)



OPERATOR SEAT WITH SCANNER (WITHOUT ROLLER TABLE).

# EUROXWAY® SRL

EUROXWAY SRL (s.u.) Office: Viale della Repubblica 7/C - 42024 Castelnovo di Sotto (RE) Italy

Part. IVA - Cod. Fiscale (VAT/TVA): IT 01546560358 - Office Phone: +39 0522 682548 - Mail: [admin@euroxway.srl](mailto:admin@euroxway.srl)

Data, and specifications in this catalog are subject to change without notice

CATALOG BUILT: 01/2020